



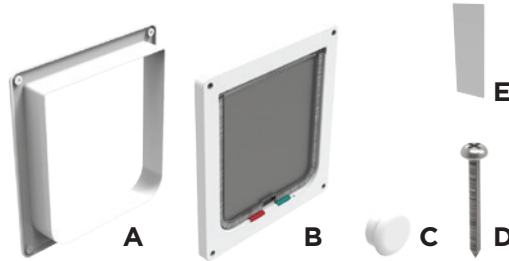
CAT FLAP

Product Codes:
#1160, #1161

IMPORTANT! READ AND FOLLOW THESE INSTRUCTIONS CAREFULLY AND KEEP FOR FUTURE REFERENCE.

Parts List

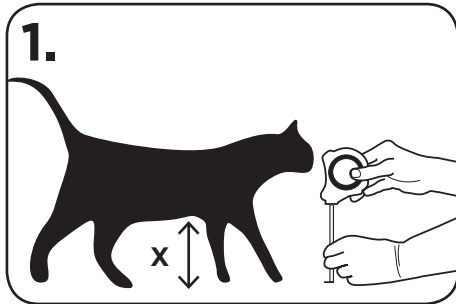
- A. Outer door frame
- B. Inner door frame
- C. 8x Screws
- D. 8x Screw covers
- E. 4x Adhesive strips



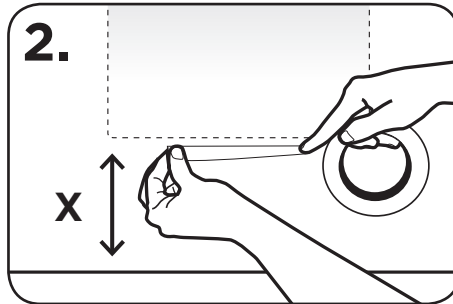
Tools Required

- Jigsaw
- Hacksaw
- Drill with 10mm & 3mm drill bit
- Phillips screwdriver
- Pencil
- Scissors
- Tape measure/ruler

Installation



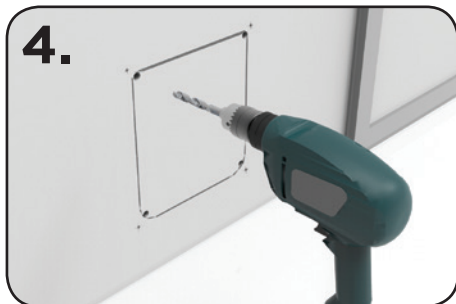
1. Measure the height (x) from the underside of the cat's stomach to the floor.



2. Mark height (x) on door / panel with tape or similar.



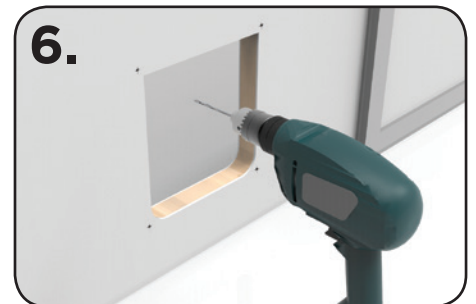
3. Cut out supplied template, line up height (x) with opening & trace on to door.



4. Drill holes in each of the inside corners with a minimum of 10mm (3/8") drill bit.



5. Using a reciprocating jigsaw, cut along marked lines.



6. Check outer frame fits opening and screw holes align. Drill 3mm pilot holes.



7. Place outer frame in hole, if the tunnel protrudes through the door, mark around tunnel.



8. Cut along line using a hacksaw.



9. Screw into door from both sides and cover screws with screw covers.
WARNING: Over tightening of screws will cause damage to cat flap.

Please note, screws provided are for maximum surface thickness. If your installation requires a shorter tunnel, shorter screws may be required. For materials other than timber please use suitable fixings. Check before installation.



CAT FLAP

Product Codes:
#1160, #1161

IMPORTANT! READ AND FOLLOW THESE INSTRUCTIONS CAREFULLY AND KEEP FOR FUTURE REFERENCE.

Training

1. Cats are smart when it comes to finding food so this is a great motive to get your cat to start using the cat flap. Start by using some tape to hold the flap completely open.
2. First feed your cat next to the cat flap, then try putting some food or tasty treats on the other side of the flap. Let your cat watch you place the treats on the other side of the flap.
3. When your cat starts to consistently peek through without hesitation, you can go to the next step, which is to throw the treats a little further. In no time, your cat should be going all the way through the open flap to retrieve its rewards.
4. Now remove the tape holding the flap open. To get your cat used to pushing the door open, hold the door part way open and repeat the food and treats progression. Gradually, over many trials, make the opening smaller and smaller so that your cat has to push more and more to get through.
5. If your cat is hungry enough training should go quickly. Once they figure it's safe to push the flap they will be going in and out at will. During the training sessions make sure the door never smacks your cat in the rear, a startle could slow the progress you have both worked to achieve.

WARNING

If your home has children as well as pets it is important to remember that children can misuse the pet door and gain access to potential hazards on the other side. You would certainly contravene municipal laws and be found guilty of an offence if there was a swimming pool on the other side of the pet door. You are further advised to be very alert to any future hazards which may occur from time to time on the other side of the pet door such as garden chemicals or insecticides which, even if only put down for a few minutes, would be dangerous to children. Remember that any closing panel or lock provided by Perma Products with this product is for simple convenience and is certainly not a security device. Furthermore, we will not be responsible or liable for unintended use or misuse. Please remember it is you the purchaser who must at all times be aware of what you have allowed access to by the installation of this pet door. Please think safety and remain vigilant throughout the life of this product as it is you the purchaser who is responsible for any oversight this installation creates.

CAUTION

Before you install this door, you must check all your building codes or body corporate rules that could affect the installation of a pet door. You should also check with a qualified builder or trades person that the installation you intend is suitable and safe within the chosen location. This is neither a fire door or security door and it is imperative that you the purchaser consider any risks that may be created both inside and outside after installation of your pet door. Please think safety and don't forget to consider future risks that could be brought about by changes elsewhere on your property.

NOTE

Keep these warnings and cautions with any other important documents within your home and give them to any new owner, tenant or guest so that they too can be made aware of the responsibilities that come with having a pet door within the premises.