

SANIVITE**SA 95**

SANIVITE is the perfect solution for installing a complete kitchen or laundry anywhere you choose.

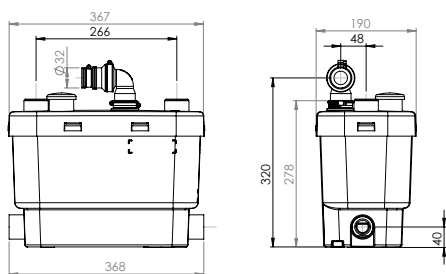
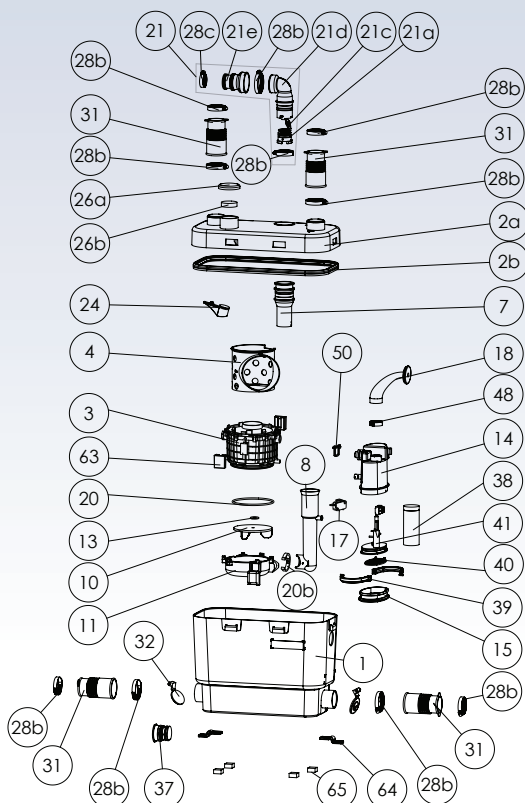
PUMPING DISTANCE UP TO **5M**



2 YEAR WARRANTY



PUMPING DISTANCE UP TO **50M**



POSSIBLE CONNECTIONS

Dishwasher; washing machine, shower; vanity basin, bath, kitchen sink

VERTICAL PUMPING HEIGHT

Up to 5m

HORIZONTAL PUMPING DISTANCE

Up to 50m (refer to pumping graph below)

RECOMMENDED DISCHARGE PIPE DIAMETER

25mm uPVC Pressure Pipe

NORMAL OPERATING TEMPERATURE

35°C and max 60°C for short periods

ELECTRICAL POWER SUPPLY

220-240V / 50Hz

MOTOR POWER RATING

400W

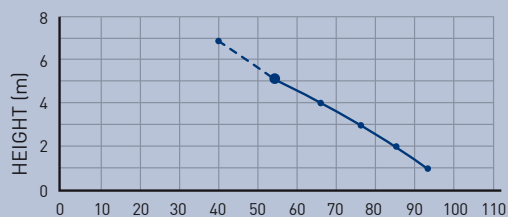
OVERALL MEASUREMENTS (W x H x D)

373 x 275 x 185mm

ACCESSORIES

- Factory pre mounted with non return valve and carbon filter (supplied)
 - Can be equipped with SaniAlarm (sold separately)
- All horizontal pipework requires a minimum of 1:100 fall

FLOW RATE PERFORMANCE



PUMPING DISTANCE PERFORMANCE

Increase size of horizontal run by one pipe size after 5m

