

eco-hydrate®

eco-hydrate ORGANIC AND BIODEGRADABLE

eco-hydrate contains plant-based ingredients and long chain organic polymers. The soil wetting agents used in **eco-hydrate** have been specifically selected as they have no impact on ecosystems or aquatic organisms. All ingredients are completely biodegradable.

Lawns	How to use	Plants	How to use
Seeding or new turf	Mix 50ml into a 9L watering can and apply evenly to 10m².	Pot plants & Seedlings	Mix 50ml per litre of water and apply to moist soil. 500ml will treat 50 pots (av. 15cm in diameter). Apply monthly during hot weather.
General maintenance	Mix 25ml into a 9L watering can and apply evenly to 10m². Re-apply every 2-4 weeks during hot dry periods.	Garden Beds and New Landscaping	Mix 25ml per litre of water and apply around newly planted plants and existing garden beds. Apply monthly during hot weather.

Lightly rinse residual solution off plants as there is no benefit in applying **eco-hydrate** to the foliage of plants.



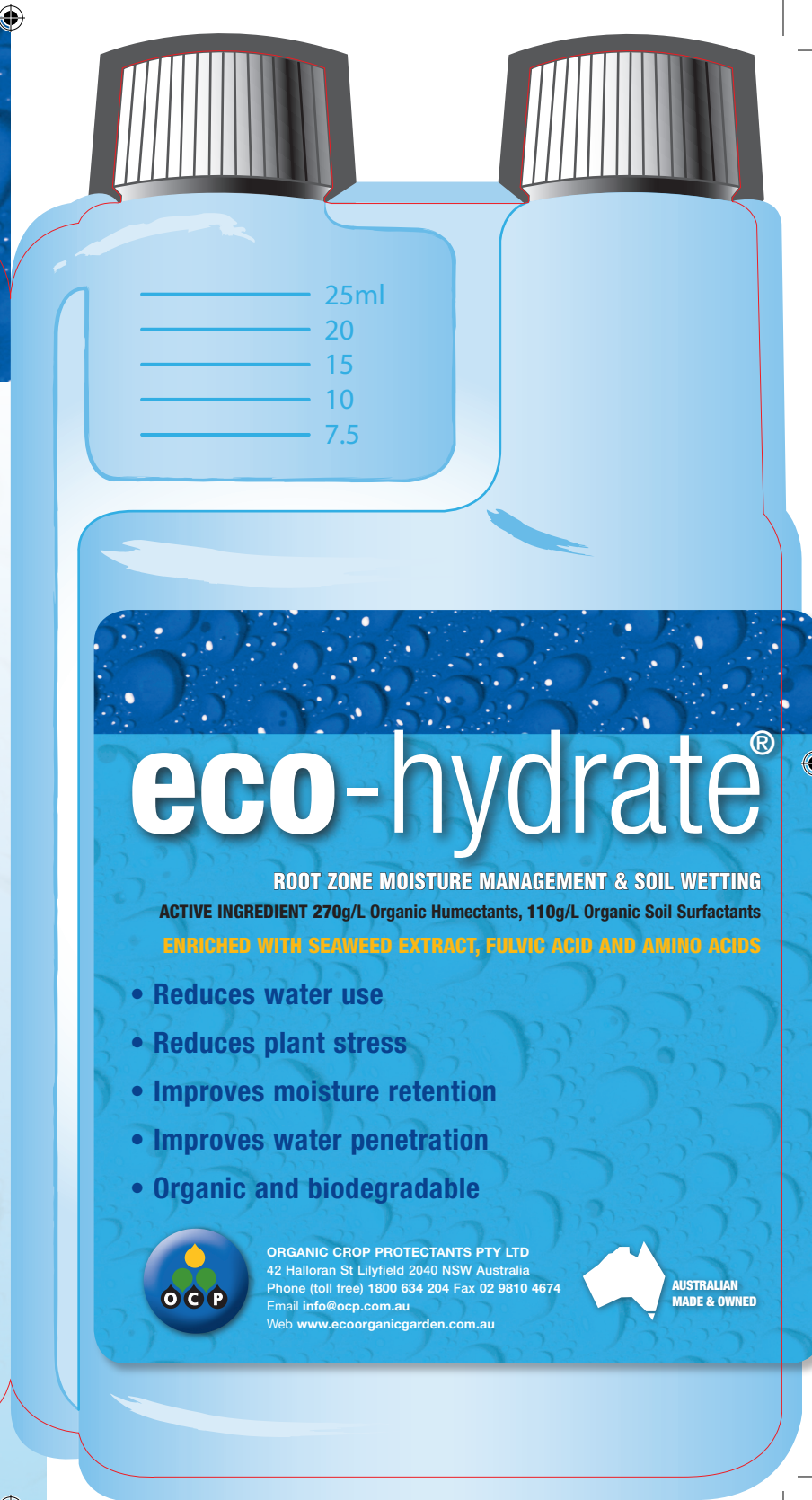
Manufactured by **ORGANIC CROP PROTECTANTS Pty Ltd**

ACN 003 149 719

42 Halloran Street Lilyfield 2040 NSW Australia

Phone 02 9810 4566 Fax 02 9810 4674 Freecall 1800 634 204

Email info@ocp.com.au Web www.ecoorganicgarden.com.au



eco-hydrate®

ROOT ZONE MOISTURE MANAGEMENT & SOIL WETTING

ACTIVE INGREDIENT 270g/L Organic Humectants, 110g/L Organic Soil Surfactants

ENRICHED WITH SEAWEED EXTRACT, FULVIC ACID AND AMINO ACIDS

- Reduces water use
- Reduces plant stress
- Improves moisture retention
- Improves water penetration
- Organic and biodegradable



ORGANIC CROP PROTECTANTS PTY LTD

42 Halloran St Lilyfield 2040 NSW Australia

Phone (toll free) 1800 634 204 Fax 02 9810 4674

Email info@ocp.com.au

Web www.ecoorganicgarden.com.au



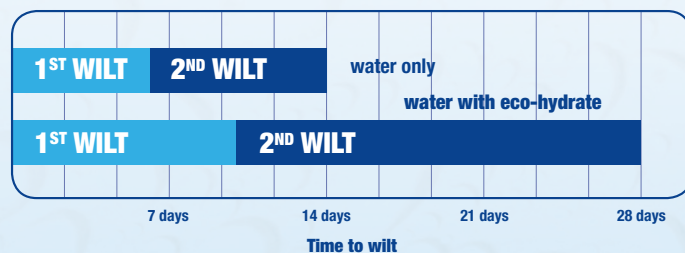
eco-hydrate®

eco-hydrate **REDUCES PLANT STRESS**

eco-hydrate **REDUCES WATER USE**

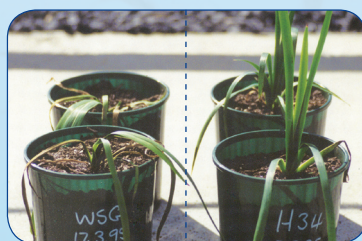
eco-hydrate reduces evaporation and improves the uniform wetting of both soil and potting mixes. When applied to lawns, gardens and potted plants, this dual action reduces the number of water applications required as moisture is retained and utilised more efficiently.

Wilt time comparison between water only and **eco-hydrate** treated plants



eco-hydrate **IMPROVES MOISTURE RETENTION**

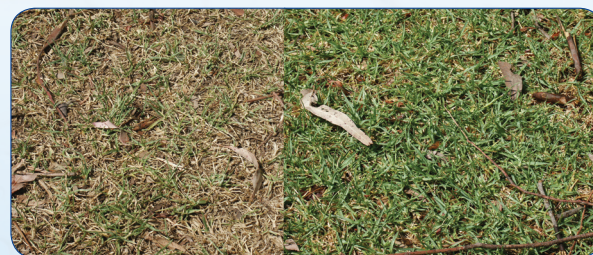
eco-hydrate captures soil moisture that is normally lost by evaporation, keeping soil moist for longer. **eco-hydrate** also improves moisture retention by increasing the depth and uniform wetting of the soil and plant roots.



Water storing granules

eco-hydrate

Domestic Lawn in Summer

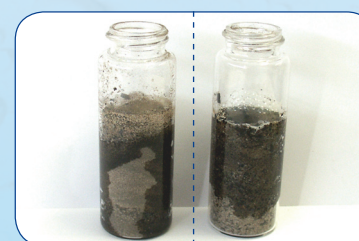


Untreated lawn

eco-hydrated lawn

eco-hydrate **IMPROVES WATER PENETRATION**

eco-hydrate contains organic soil wetting agents which improve the penetration and uniform spread of moisture in soil. This reduces run-off and the problem known as “finger flow”, where water runs through small tunnels away from the root zone.



Water – finger flow

eco-hydrate – uniform wetting