

**vax**  
CORDLESS  
Verso

**POWERFUL.  
VERSATILE.  
2-IN-1.**

LET'S GET STARTED.

**VX62**



# Let's talk safety



## Basic safety precautions

**This vacuum cleaner is intended for household use only and NOT for commercial or industrial use.**

### **READ ALL THE INSTRUCTIONS BEFORE USING THIS APPLIANCE**

- Only use the vacuum cleaner indoors and keep the area you're cleaning well lit.
- Keep fingers, hair and loose clothing from moving parts and openings whilst using the vacuum cleaner.
- This appliance is not intended for use by persons (including children) with reduced physical, sensory or mental capabilities or lack of experience and knowledge unless they have been given supervision or instruction concerning use of the appliance by a person responsible for their safety. Children should not play with the vacuum cleaner. Cleaning and user maintenance should not be made by children.
- Only Vax recommended tools and accessories should be used with this vacuum cleaner
- Do not use charger with damaged cord or plug. If appliance or charger is not working as it should, has been dropped, damaged, left outdoors or dropped into water, take it to a Vax authorised repair agent prior to continuing use. Please contact our Customer Care Line on: AU: 1300 361 505 / NZ: 0800 800 900 (Mon-Fri 8.30am to 5.00pm) or visit [www.vax.com.au](http://www.vax.com.au) / [vax.co.nz](http://vax.co.nz) for your nearest Vax authorised repair agent.

**Please keep instructions for further use.**

### **Battery Safety Precautions:**

- Do not place vacuum or batteries near fire or heat. This will reduce the risk of explosion and possible injury.
- Do not crush, drop or damage battery pack. Do not use a battery pack or charger that has been dropped or received a sharp blow. A damaged battery is subject to explosion. Properly dispose of a dropped or damaged battery immediately.
- Batteries can explode in the presence of a source of ignition, such as a pilot light. To reduce the risk of serious personal injury, never use any cordless product in the presence of open flame. An exploded battery can propel debris and chemicals. If exposed, flush with water immediately.
- Do not charge vacuum in a damp or wet location. Following this rule will reduce the risk of electric shock.
- For best results, charge the battery tool in a location where the temperature is more than 10°C but less than 37°C. To reduce the risk of serious personal injury, do not store outside or in vehicles.

- Under extreme usage or temperature conditions, battery leakage may occur. If liquid comes in contact with the skin, wash immediately with soap and water, then neutralize with lemon juice or vinegar. If liquid gets into the eyes, flush them with clean water for at least 10 minutes, then seek immediate medical attention. Following this rule will reduce the risk of serious personal injury.
- Store the battery pack where the temperature is below 27°C.
- The battery must be removed from the appliance before it is scrapped.
- The appliance must be disconnected from the supply mains when ever removing the battery.
- The battery is to be disposed of safely.

**WARNING:** For the purpose of recharging the battery, only use detachable supply unit type YLJXA-A300050 provided with this appliance.

#### **Charger Safety Precautions:**

- The charger must not be damp, and should never be used in a damp environment.
- Do not use the charger if it has suffered any heavy shock or jolting, or is damaged in any other way.
- Do not conduct charging in a position which may become exposed to sunlight or other heat source. Recommended temperature range at charging vicinity is 10° to 25° C.
- Do not conduct charging operations in the vicinity of flammable materials. Example: Cloth, packaging materials, paint, spray paint or aerosols, lubricant, thinners, petrol containers, gas containers or gas appliances.
- Do not cover any ventilating slots and provide adequate ventilation during operation.
- Never modify, disassemble or attempt to repair the product yourself.
- Do not allow the charger or batteries to become contaminated with any material which could be conductive.
- Remove the plug of the product from the power socket when it is not in use or when cleaning it.
- Protect battery contacts to avoid a short circuit caused by metallic objects which could cause a fire or explosion!
- Do not charge batteries which show signs they have leaked electrolyte. Dispose of them properly.
- Never charge a damaged battery.

# Let's talk safety



## Don'ts

- Do not pull or carry by charger cord, use cord as a handle, close a door on cord, or pull cord around sharp edges or corners. Do not place product on cord. Do not run appliance on cord.
- Don't handle the charger plug or use the vacuum cleaner with wet hands.
- Don't use this vacuum cleaner if it has been dropped, damaged, immersed in water or left outdoors.
- Don't leave the vacuum cleaner in one spot for an extended period of time when the brushbar is activated. This vacuum cleaner is fitted with a rotating brushbar which if left in one place may cause damage to the floor surface.
- Don't attempt to remove blockages with sharp objects as this may cause damage to the vacuum cleaner.



## Do's

- Always make sure the filter and dirt container are fitted correctly before using your vacuum cleaner.
- Always turn off and unplug from charger and remove the battery before carrying out any maintenance.
- Turn off all controls on the vacuum cleaner before disconnecting or connecting the battery.
- Take extra care when cleaning on the stairs.
- Always protect the charger cord from heated surfaces or near open flames.
- Keep all openings clear and free from debris as this may affect the airflow/suction.
- Store your vacuum cleaner in a cool, dry area. If filters have been cleaned as per user guide instructions ensure they are thoroughly dry before storing away.
- Always use the charger supplied with the vacuum cleaner.
- Use only SAA approved 10amp extension cords. Care should be taken to arrange the extension cord as it can be a trip hazard.
- Always carry the vacuum cleaner by the handle.

- Don't try to short the terminals of the battery and the charger.
- Don't use the vacuum cleaner with incorrect voltage as this may result in damage or injury to the user. The correct voltage is listed on the rating label.
- Don't vacuum up hot coals, cigarette butts, ash, matches or smoking hot burning items or use in an area where there may be harmful fluids (chlorine, bleach, and ammonia drain cleaner).
- Do not vacuum hard or sharp objects such as glass, nails, screws or coins etc.
- Don't vacuum plaster dust, concrete dust or any other building or vitreous material.
- Do not vacuum flour, baking soda or any other powder-based carpet refresher or deodoriser.

**CAUTION:** The battery used in this device may present a risk of fire or chemical burn if mistreated.

Do not disassemble, heat or incinerate.

Do not disassemble and do not dispose of in fire. Do not attempt to disassemble the battery or remove any component projecting from the battery terminals.

The battery and charger have no user serviceable parts. Fire or injury may result.

Prior to disposal, protect exposed terminals with heavy insulating tape to prevent shorting.

**WARNING:** For best performance terminals on battery, battery charger and vacuum cleaner must be clean and free from dust and dirt.

# Thank you for buying this Cordless Verso.

## Taking care of your carpets and hard floors

The Cordless Verso series is designed to make vacuuming carpets and hard floors regularly, as effective and efficient as possible and this user guide will help you get the most out of your machine.

Maintaining your carpets and hard floors will ensure they keep their appearance for longer and Vax will help you take good care of them.

## Taking care of your Cordless Verso

Also inside this guide are instructions on maintaining your new machine, so that it's ready when you are to tackle your carpets and hard floors.

## We're here if you need us

The Vax logo is displayed in a bold, orange, sans-serif font.

For troubleshooting simply visit or call:

**Australia: 1300 361 505\***

**vax.com.au**

**New Zealand: 0800 800 900\***

**vax.co.nz**

\*Monday – Friday: 8:30am -5:00pm

Calls are charged at the standard local rate. Please make note of the serial number and model number of the product before calling.

Let's talk safety

Getting to know your machine

Getting started

Using your machine

Taking care of your machine

Let's talk technical

Accessories

What to do if it goes wrong

Getting in touch

## Cordless Verso

### Included with your machine

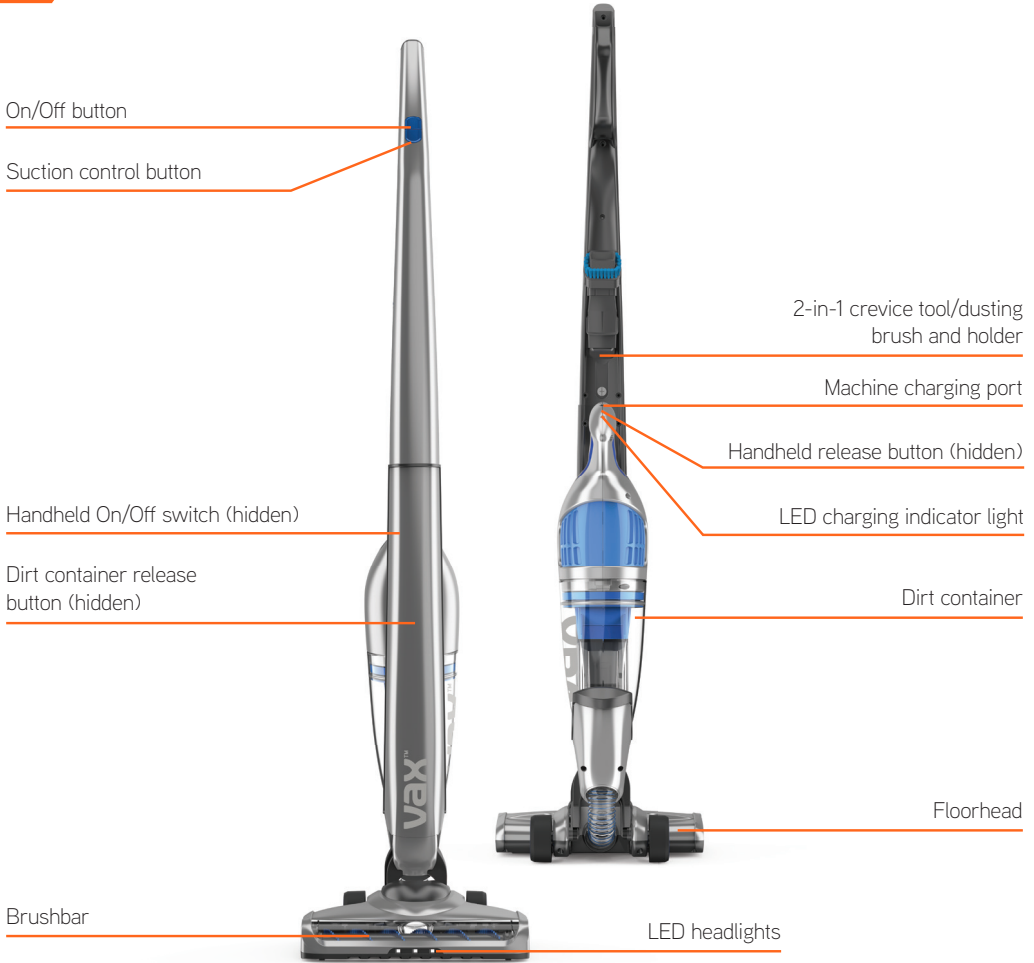


Charger



2-in-1 Crevice Tool/  
Dusting Brush

# Getting to know your machine



## Technical Specification

Name	<b>Verso 25.2V</b>
Model number	<b>VX62</b>
Battery voltage	<b>25.2V</b>
Run time	<b>Up to 80 mins*</b>
Charge time	<b>5 hours</b>
Weight	<b>3.4kg</b>
Dust bin capacity	<b>0.8l</b>

## Charger Specification

Model number	<b>YLJXA-A300050</b>
Input voltage	<b>100-240V ~ 50/60Hz 0.5A</b>
Output voltage	<b>30.0V --- 500mA</b>

## Battery Specification

Rating	<b>2.0 Ah</b> <b>50.4Wh / 25.2V</b>
--------	--

## Accessories & Consumables

Pre-motor filter	<b>Model No. VX62F</b>
------------------	------------------------



To purchase consumables and accessories, please visit [vax.com.au](http://vax.com.au)

Subject to technical change without notice. \*Turn off brushbar on hard floors. Images are illustrative only.



**PLEASE READ 'LET'S TALK SAFETY' AT THE BEGINNING BEFORE USE**

## Before you begin

**CAUTION:** Always switch off the vacuum cleaner before connecting or disconnecting the handheld/attachments or removing and emptying the dirt container.

**IMPORTANT:** The vacuum cleaner is equipped with a thermal cut-out. If for any reason the vacuum cleaner does overheat the thermostat will automatically turn the vacuum cleaner off. If this happens, switch the vacuum cleaner off. Remove and empty the dirt container. Also check the vacuum cleaner for blockages. Allow the vacuum cleaner to cool for approximately 1 hour (if you have washed the filter please wait 24 hours for the filter to fully dry before putting back into the machine). For best cleaning results, filters require cleaning every 4-6 uses or as needed depending upon use. If the vacuum cleaner is blocked, switch off before removing the blockage.

## Assembling your 2-in-1 vacuum cleaner



Line up the handle with the main body and lower into place.



Insert the screw into the back of the handle. Using a cross head screw driver tighten until the handle is secured into place.



Line up the handheld nozzle with the back of the main body. Push the handheld onto the main body until it clicks into place.



Store the 2-in-1 Tool on board the vacuum cleaner by pushing the tool firmly into the tool holder located on the back of the handle.

## Charging your 2-in-1 vacuum cleaner

**NOTE:** Initial charge is 5 hours, charging will be required before first use. Failure to fully charge the battery before first use may result in poor battery performance. Charge time is 5 hours thereafter.

The vacuum can be charged with the handheld either attached to or detached from the main body.



Plug the charger into the charging port, located on the top of the handle of the handheld and plug into the mains.



Once fully charged (5 hours) the LED indicator on the handheld will illuminate green.



When the vacuum needs recharging the LED light on the handheld will flash red and the machine will cut out.

# Using your machine

## As an upright vacuum cleaner

**CAUTION:** Never leave the vacuum cleaner in one spot for an extended period of time when in use as this may damage the floor surface. Vax cannot be held responsible for damage to the floor surface if this recommendation is not followed.



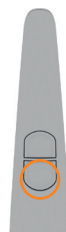
Unplug the charger from the mains and from the handheld.



Place foot on the floorhead and pull the handle backwards to recline the machine.



Press the On/Off button on the handle to switch the machine on.



To select between high and low suction press the extended runtime button.

The brushbar will not rotate when the vacuum cleaner is locked in the upright position.



## As a handheld vacuum cleaner

**CAUTION:** Always take extra care when cleaning stairs. Always switch the handheld off before connecting or disconnection the accessories, carrying out any maintenance or troubleshooting checks and before returning the handheld to the main body.



Press the handheld release button.



Lift to remove the handheld from the main body.

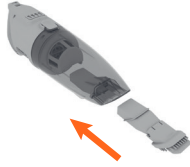


Push the On/Off switch forward to switch the handheld on.

# Using your machine



- 1 Dusting brush
- 2 Crevice tool



For a more detailed clean, line up the 2-in-1 Tool with the nozzle on the handheld and push firmly into place.



Before returning the handheld to the main body, pull the On/Off switch backwards to switch the handheld off. Pull to remove the 2-in-1 Tool from the handheld nozzle.

# Taking care of your machine

## Emptying the dirt container

**CAUTION:** Always switch off the vacuum cleaner before carrying out any maintenance or troubleshooting. Do not use your vacuum cleaner without the filters in place.



Press the handheld release button.



Lift to remove the handheld from the main body.



Press the dirt container release button to remove the dirt container.



Pull to separate the dirt container from the handheld.



Pull to remove the pre-motor filter out of the dirt container.



Hold dirt container over a bin allowing dirt/debris to fall out.

Don't overfill the dirt container to avoid blocking the air flow through the vacuum cleaner and replace filters every 6-9 months.



## Cleaning the filter

**CAUTION:** For best cleaning results filters require cleaning every 4-6 uses or as needed depending upon use. Do not use your vacuum cleaner without the filter in place.



Press the handheld release button.



Lift to remove the handheld from the main body.



Press the dirt container release button to remove the dirt container.



Pull to separate the dirt container from the handheld.

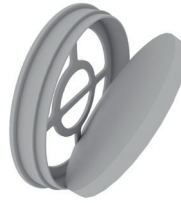
# Taking care of your machine



Pull to remove the pre-motor filter out of the dirt container.



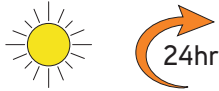
Tap the filter over a bin to remove any dust and debris. **Do not wash the filter frame.**



Pull the foam filter to separate and remove from of filter frame.



Wash foam filter under running water (max 40°C).



Leave for at least 24 hours or until fully dry before replacing into the machine.

## Cleaning the terminals

**CAUTION:** For best performance all terminals must be free from dust and dirt.



Using a dry cloth or soft dusting brush, remove any dust or debris from terminals on main body and handheld.

# Let's talk technical

## Cleaning blockages

**CAUTION:** Use a blunt instrument such as a broom handle or something similar when removing a blockage from the main body or floorhead.



Press the handheld release button.



Lift to remove the handheld from the main body.



Place foot on the floor head and pull the handle backwards to recline the main body.



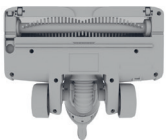
Lift the main body off the floor with the floor head unlocked.



Use a blunt instrument such as a broom handle to clear any blockage in the hose connecting to the floorhead.

## Replacing and cleaning a blockage from the brushbar

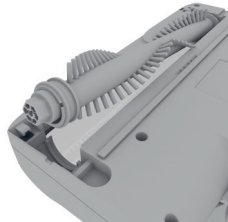
**CAUTION:** If the brushbar has been obstructed, the Motor Protection Sensor may have been activated. Remove the handheld from the main body and clear any obstruction from the brushbar. Wait 30 minutes for the vacuum cleaner to reset itself. Return the handheld to the main body and retry.



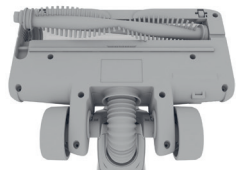
Using a pair of scissors remove any threads or hair caught around the brushbar.



To release the brushbar pull and lift the release lock located underneath the floorhead.



Remove the brushbar lifting the side of the brushbar nearest the release lock first.



Replace the brushbar. Fit the inverted round end of the brushbar first, then line up and push the other side of brushbar into the floorhead. Refit the release lock.

# Don't forget your accessories!

AU: [www.vax.com.au](http://www.vax.com.au) / NZ: [www.vax.co.nz](http://www.vax.co.nz)

## Reach mode tools

Pre-Motor Filter  
VX62F



# What to do if it goes wrong

## Problem

## Solution

Why does my vacuum cleaner have no power?

- Check the vacuum cleaner is fully charged. Go to 'Using your machine'.
- Check the charger is plugged into the mains and correctly connected to the vacuum cleaner. Go to 'Getting started'.
- Check the handheld has been correctly fitted into the main body.
- Check terminals on the main body and handheld are clean. Go to 'Let's talk technical'.
- If the brushbar has been obstructed, the Motor Protection Sensor may have been activated. Remove the handheld and clear any obstruction from the brushbar. Wait 30 minutes for the vacuum cleaner to reset itself. Replace the handheld and retry.

Why isn't my vacuum cleaner charging?

- Check the charger is plugged into the mains and correctly connected to the vacuum cleaner. Go to 'Getting started'.
- Check the charger cable for damage. If damaged please contact our Customer Care Line on: AU 1300 361 505 / NZ 0800 800 900

Why won't the vacuum cleaner pick up?

- Empty the dirt container and clean filters. Go to 'Taking care of your machine'.
- There may be a blockage in the vacuum cleaner. Go to 'Let's talk technical'.
- The brushbar may not be turning. Go to 'Why won't the brushbar turn?' below.
- The vacuum cleaner may need recharging. Go to 'Getting Started'.
- Low suction has been selected, increase to high suction. Go to 'Using your machine'.

Why won't the vacuum cleaner pick up?

- If the brushbar has been obstructed, the Motor Protection Sensor may have been activated. Remove the handheld and clear any obstruction from the brushbar. Wait 30 minutes for the vacuum cleaner to reset itself. Replace the handheld and retry.
- The brushbar may be blocked. Go to 'Let's talk technical'.

Why won't the brushbar turn?

- If the brush bar has been obstructed, the Motor Protection Sensor may have been activated. Remove the handheld and clear any obstruction from the brush bar. Wait 30 minutes for the vacuum cleaner to reset itself. Replace the handheld and retry.
- The brushbar may be obstructed. Go to 'Let's talk technical'.

Why is the LED light continually flashing?

- The red light will flash when the vacuum needs recharging. Go to 'Getting started'.



## Taking care of you

We're here if you need us. For trouble shooting, simply call or visit:

**Australia: 1300 361 505\***

**vax.com.au**

**New Zealand: 0800 800 900\***

**vax.co.nz**

\*Monday-Friday 8.30am to 5.00pm



## Notes



# vax

Distributed by Techtronic Industries Australia Pty. Ltd.  
31 Gilby Road, Mt Waverley, VIC 3149 Australia.  
Careline AU: 1300 361 505 [www.vax.com.au](http://www.vax.com.au)  
Careline NZ: 0800 800 900 [www.vax.co.nz](http://www.vax.co.nz)