

eco-fungicide®

DIRECTIONS FOR USE

Apply **eco-fungicide** at first sign of disease and ensure thorough coverage of all plant surfaces for best results.

Add the required amount of **eco-fungicide** to sprayer then half fill with water. Add the **eco-oil** and remaining amount of water. Mix until fully dissolved. Agitate the solution periodically while spraying and use within 24 hours of mixing.

PLANTS	DISEASE	RATE	HOW TO APPLY
Tomatoes, Capsicums, Cucumbers, Strawberries, Zucchini	Powdery Mildew	3-4 g per 1 L of water and add 2 mL eco-oil	Begin application at first sign of disease. Repeat application at 7-10 day intervals. Use the higher rate and shorter repeat interval under conditions of rapid plant growth or severe disease pressure. Apply to ensure complete and thorough coverage of all plant surfaces. Pay particular attention to the underside of leaves.
Roses	Powdery Mildew Black Spot		
Geraniums (pelargoniums)	Rust (<i>Puccinia pelargonii-zonalis</i>)	4 g per 1 L of water and add 3 mL eco-oil	Begin application at first sign of disease. Repeat application at 7 day intervals. Apply to ensure complete and thorough coverage of all plant surfaces. Pay particular attention to the underside of leaves.
Grapevines	Powdery Mildew (<i>Oidium</i> spp.)	Mix 4 g per 1 L of water and add 2 mL eco-oil	Begin application at first sign of disease. Repeat applications at intervals of 10 to 14 days as new growth or infection occurs, or if conditions favour disease. Apply to ensure complete and thorough coverage of foliage.

Adding **eco-oil** to the solution improves **eco-fungicides** ability to stick and spread evenly over foliage which enhances results.

eco-fungicide is compatible with both **eco-seaweed** and **eco-aminogro** so you can fight disease whilst feeding and strengthening your plants all at the same time!

For more information on **eco-fungicide** and the rest of the **eco-organic garden range** visit www.ecoorganicgarden.com.au



ORGANIC CROP PROTECTANTS PTY LTD

61 Turrella St, Turrella NSW 2205 Australia

Telephone: 1800 634 204 Email: ecoorganicgarden@ocp.com.au

www.ecoorganicgarden.com.au

ACN 003 149 719



Printed on recycled paper



Australian Organic Registered Garden Product

ALLOWED INPUT 222AI



eco-fungicide®

ORGANIC FUNGICIDE

ACTIVE CONSTITUENT: 940 g/kg POTASSIUM BICARBONATE

FOR THE MANAGEMENT OF FUNGUS DISEASES IN ROSES, GRAPEVINES, GERANIUMS, VEGETABLES & STRAWBERRIES.



ALLOWED INPUT 222AI



AUSTRALIAN
MADE & OWNED

eco-fungicide[®]

ORGANIC FUNGICIDE



eco-fungicide is an effective fungicide for the control of common fungal diseases on edible and ornamental plants including Powdery Mildew, Black Spot and Rust.

eco-fungicide has a two-in-one action that rapidly destroys fungal growth and leaves a protective barrier against further attacks.

eco-fungicide HOW IT WORKS

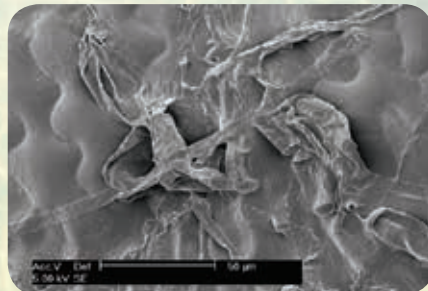
eco-fungicide works in two ways:

- 1** **eco-fungicide** damages fungal cells resulting in rapid dehydration and death of fungal growth
- 2** **eco-fungicide** inhibits new fungal spores germinating and growing

eco-fungicide achieves this by altering the pH and osmotic balance on the surface of plant tissue.



Fungal growth before application



Destroyed fungal growth 5 minutes after application

eco-fungicide WHAT MAKES IT DIFFERENT

- Controls a broad range of fungal diseases including Powdery Mildew, Black Spot and Rust
- Registered Organic
- Spray and eat the same day (no withholding period)
- Leaves no visible markings on foliage or fruit
- No harmful residues in the soil
- Great value concentrate (500g makes up to 166 litres of spray)
- Safe for beneficial insects
- Made from specially formulated food grade potassium bicarbonate
- More effective than homemade bicarb soda and milk sprays

eco-fungicide SAFE FOR BENEFICIAL INSECTS

eco-fungicide is completely harmless to beneficial insects like bees and ladybeetles. It is also safe for soil microbes and earth worms. Many other fungicides are harmful to beneficial insects, even though they officially target diseases not insects, and can result in pest outbreaks soon after spraying.