



ORIGINAL INSTRUCTIONS
**Digital Inverter
Generator**

RIG1000



N197



Important!

It is essential that you read the instructions in this manual before operating this machine.

Subject to technical modifications.



GENERAL SAFETY WARNINGS

WARNING

Read all safety warnings and all instructions. Failure to follow the warnings and instructions may result in electric shock, fire and/or carbon monoxide poisoning, which will cause death or serious injury.

WARNING

This appliance is not intended for use by persons (including children) with reduced physical, sensory or mental capabilities, or lack of experience and knowledge, unless they have been given supervision or instruction concerning use of the appliance by a person responsible for their safety. Children should be supervised to ensure that they do not play with the appliance.

Save all warnings and instructions for future reference.

- Do not operate the unit in explosive atmospheres, such as in the presence of flammable liquids, gases or dust.
 - Keep the generator a minimum of 3 feet away from all types of combustible material.
 - Exhaust contains poisonous carbon monoxide, a colorless, odorless gas. Breathing exhaust can cause loss of consciousness and can lead to death. If running in a confined or partially-enclosed area, the air may contain a dangerous amount of carbon monoxide. To keep exhaust fumes from building up, always provide adequate ventilation. Never start or run the engine inside a closed or partially enclosed area.
 - Always use a battery-powered carbon monoxide detector when running the generator. If you begin to feel sick, dizzy, or weak while using the generator, shut it off and get to fresh air immediately. See a doctor. You may have carbon monoxide poisoning.
 - Operate outdoors in a well-ventilated, well-lit area isolated from working areas to avoid noise interference.
 - Operating the generator in wet conditions could result in electrocution. Keep the unit dry.
 - Do not connect to the electrical system of a building unless the generator and transfer switch have been properly installed and the electrical output has been verified by a qualified electrician.
 - Do not use generator with electrical cords which are worn, frayed, bare, or otherwise damaged.
 - Do not touch bare wire or receptacles.
 - Keep all parts of your body away from any moving parts and all hot surfaces of the unit.
 - Stay alert, watch what you are doing and use common sense when operating the unit. Do not use the unit while you are tired or under the influence of drugs, alcohol or medication. A moment of inattention while operating may result in serious personal injury.
- Use personal protective equipment. Always wear eye protection. Protective equipment such as dust mask, non-skid safety shoes, hard hat, or hearing protection used for appropriate conditions will reduce personal injuries.

ADDITIONAL SAFETY RULES

- Gasoline is extremely flammable and explosive. A fire or explosion from gasoline will burn you and others. Always shut off engine before fueling. Never add fuel to a machine with a running or hot engine. Move at least 30 ft. from the refueling site before starting the engine. Do not smoke and stay away from open flames and sparks. Failure to safely handle fuel could result in serious personal injury.
- Check for fuel leaks. A leaking fuel cap is a fire hazard and must be replaced immediately. If you find any leaks, correct the problem before using the product. Failure to do so could result in a fire that could cause serious personal injury.
- Never attempt to burn off spilled fuel under any circumstances.
- Do not remove the oil dipstick or the fuel tank cap when the engine is running.
- Operating voltage and frequency requirement of all electronic equipment should be checked prior to plugging them into this generator. Damage may result if the equipment is not designed to operate within a +/- 10% voltage variation, and +/- 3 hz frequency variation from the generator name plate ratings.
- Do not overload the capacity of the generators. Exceeding the generator's wattage/ampere capacity can damage the generator and/or electrical devices connected to it.
- The 12 V DC receptacle is designed to charge vented wet lead acid batteries, not to jump start vehicles. Do not overcharge battery or leave battery unattended. Doing so may cause damage to the battery.
- Do not attempt to operate the generator until assembly is complete. Failure to comply could result in possible serious personal injury.
- Inspect the unit before each use for loose fasteners, fuel leaks, etc. Replace damaged parts.
- If any parts are damaged or missing, do not operate this product until the parts are replaced. Use of this product with damaged or missing parts could result in serious personal injury.
- Do not attempt to modify this product or create accessories not recommended for use with this product. Any such alteration or modification is misuse and could result in a hazardous condition leading to possible serious personal injury.
- Generators vibrate in normal use. During and after the use of the generator, inspect the generator as well as extension cords and power supply cords connected to it for damage resulting from vibration. Have damaged items repaired or replaced as necessary.



- Empty fuel tank, close fuel valve, and restrain the unit from moving before transporting in a vehicle.

MAINTENANCE

- Before storing the unit for an extended period of time, allow the engine to cool and drain fuel from the unit.
- Store the generator in a well-ventilated area with the fuel tank empty. Fuel should not be stored near the generator.
- Have your product serviced by a qualified repair person using only identical replacement parts. This will ensure that the safety of the power tool is maintained.

INTENDED USE

- This generator is designed to supply electrical power for operating compatible electrical lighting, appliances, tools, and motor loads.
- Do not use this generator to provide power for emergency medical equipment or life support devices.
- Do not use the generator to jump start vehicles. Doing so could result in damage to the vehicle or its electrical components.

ENVIRONMENTAL PROTECTION



Recycle raw materials instead of disposing of as waste. The machine, accessories and packaging should be sorted for environmental-friendly recycling.

SYMBOL



Safety alert



Please read the instructions carefully before starting the machine.



Do not expose to rain or use in damp locations.



Failure to use in dry conditions and to observe safe practices can result in electric shock.



Running generator gives off carbon monoxide, an odorless, colorless, poison gas. Breathing carbon monoxide can cause nausea, fainting, or death.



Fuel and its vapors are extremely flammable and explosive. Fire or explosion can cause severe burns or death.



To reduce the risk of injury or damage, avoid contact with any hot surface.



To reduce the risk of serious injury, avoid attempting to lift the generator alone.



Consult with local electrician to determine grounding requirements before operation.



Failure to properly ground generator can result in electrocution, especially if the generator is equipped with a wheel kit.



Waste electrical products should not be disposed of with household waste. Please recycle where facilities exist. Check with your Local Authority or retailer for recycling advice.

ICONS IN THIS MANUAL



Safety



Unpacking



Getting started



Overview



Operation



Maintenance



Safety alert



Go to page #



Information



Lock



Unlock



Wear safety gloves



Dispose of replaceable part or accessory



Parts or accessories sold separately



Restart



A sound is heard



Unplug



Power on



Use fuel stabilizer



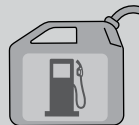
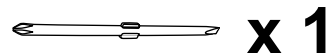
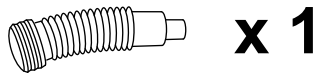
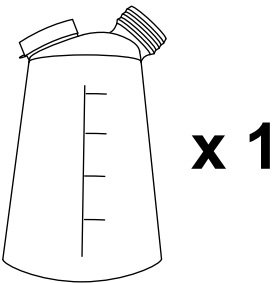
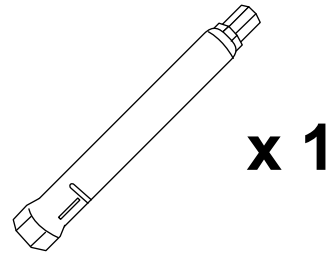
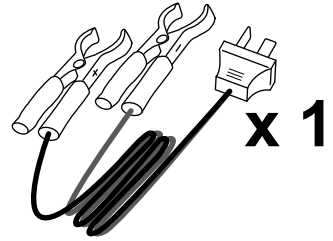
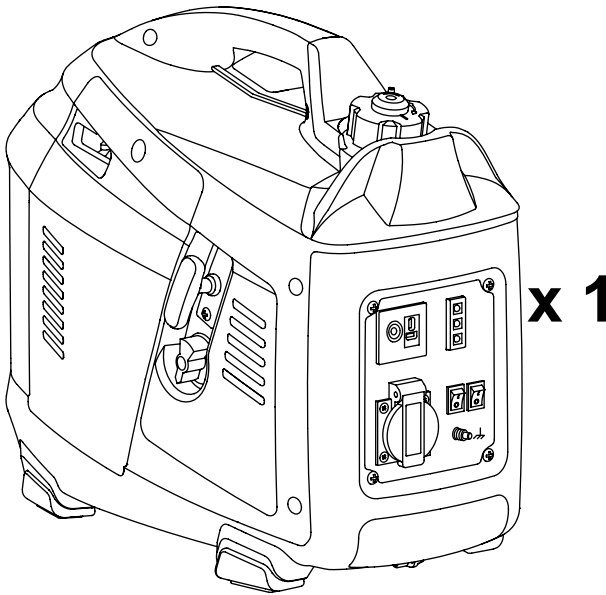
Fuel



Waiting time



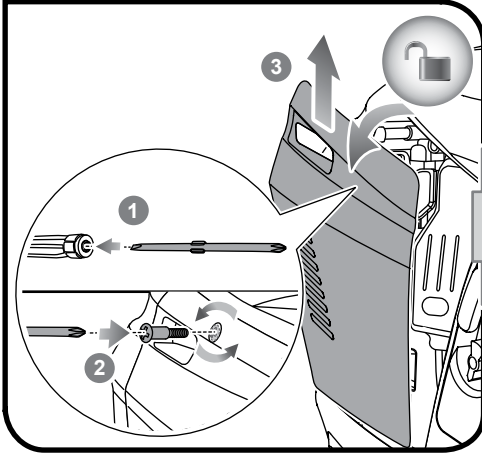
Unpacking



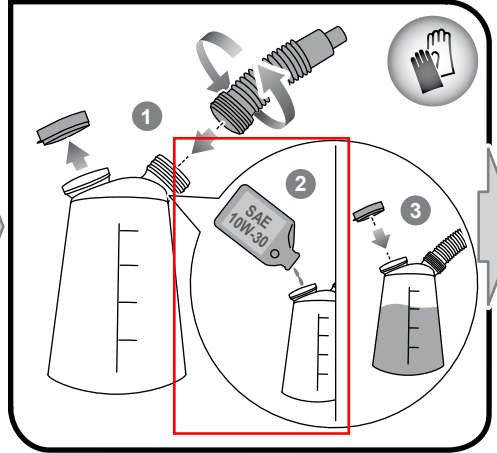
≥ 90 #



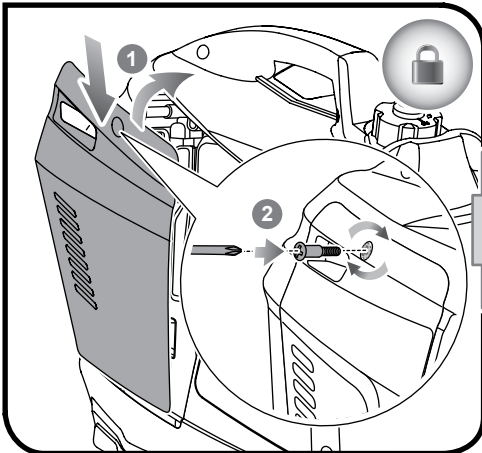
1



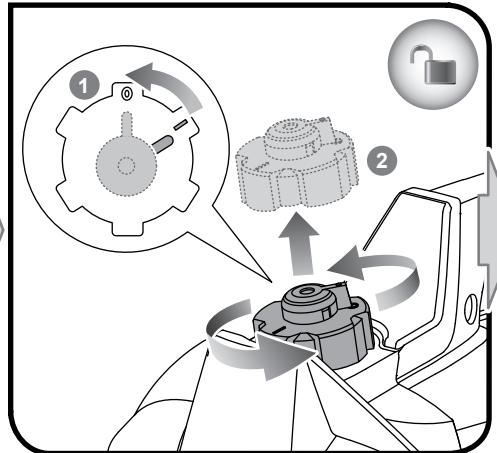
2



6

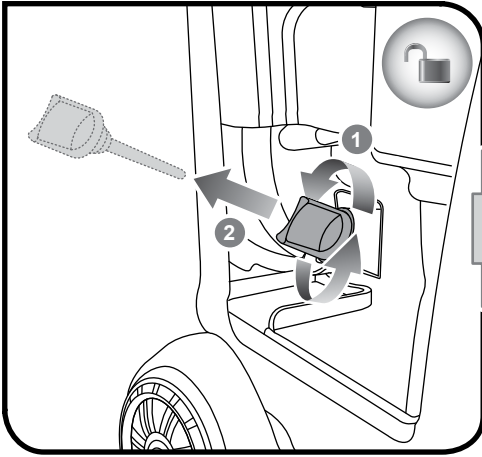


7

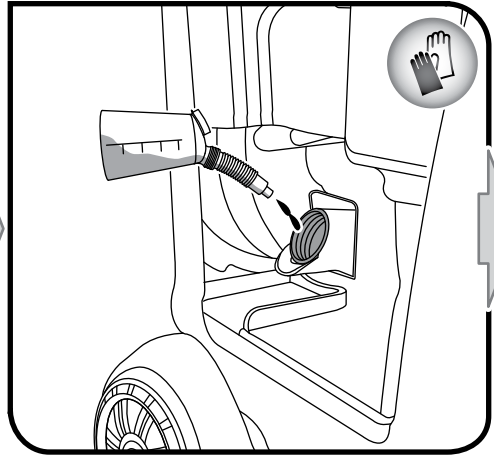




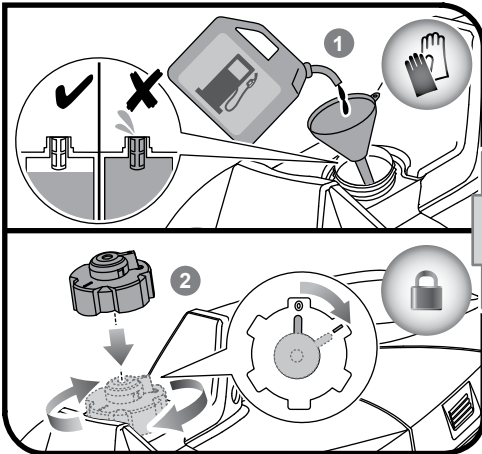
3



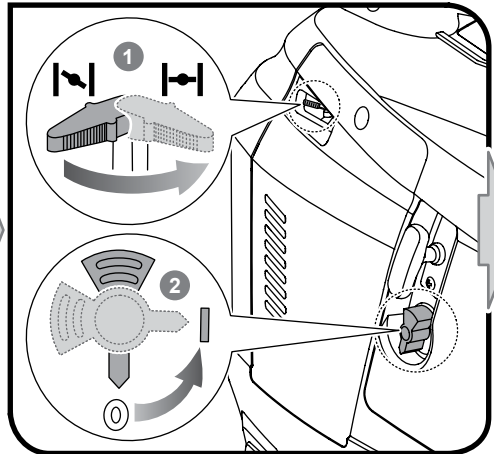
4



8

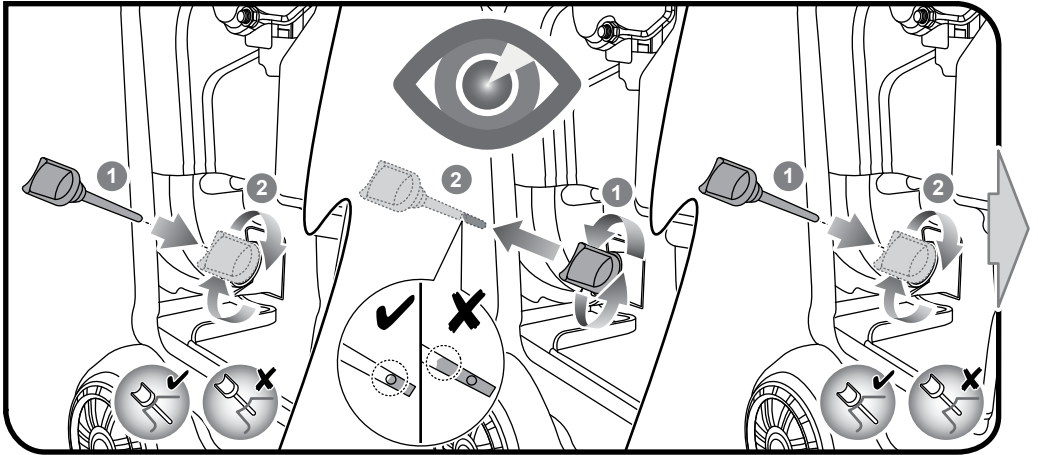


9

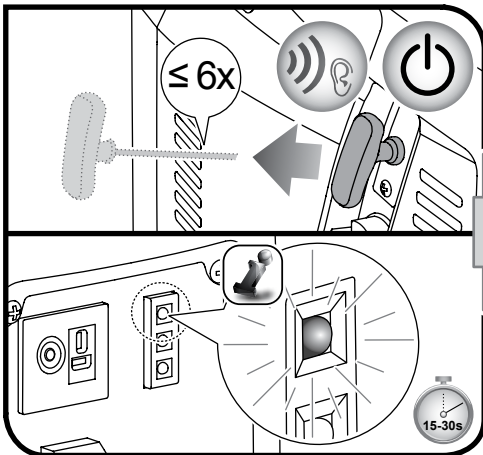




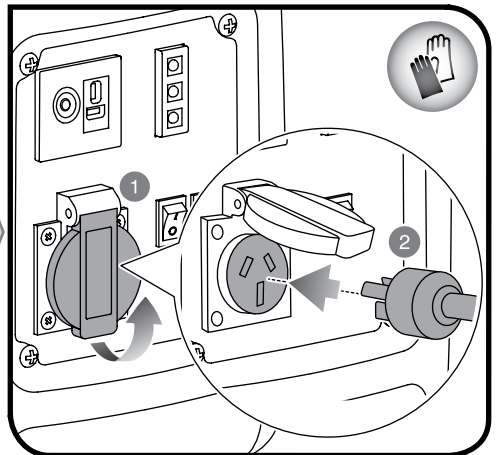
5

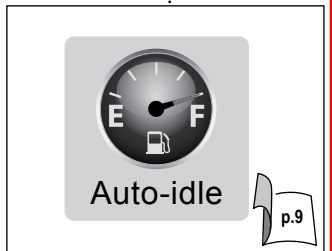
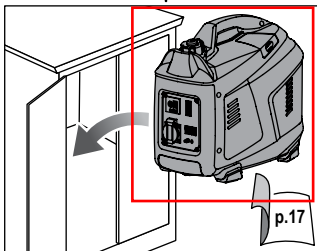
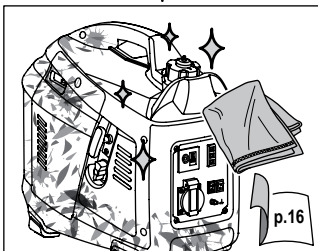
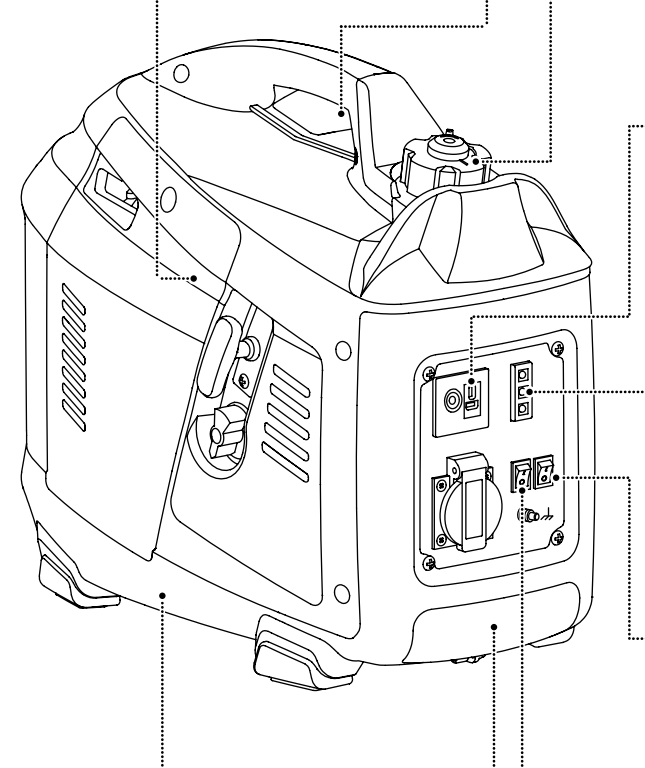
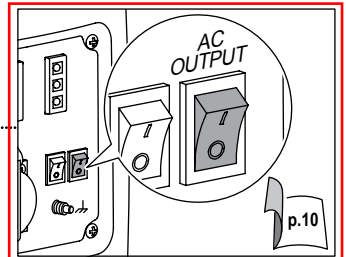
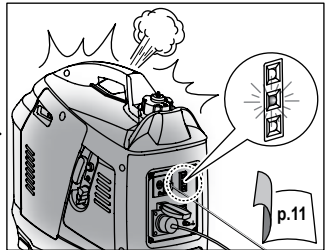
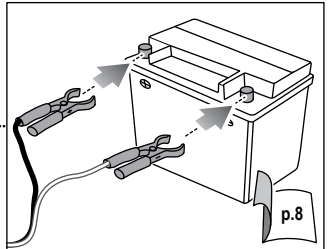
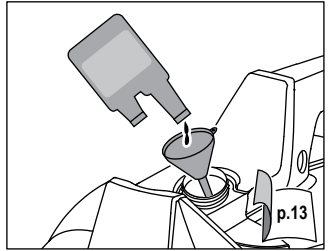
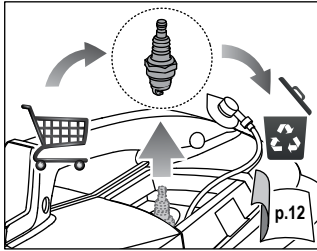
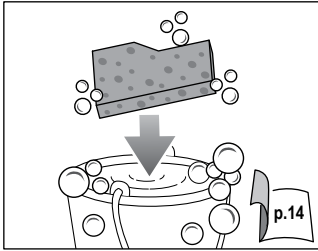


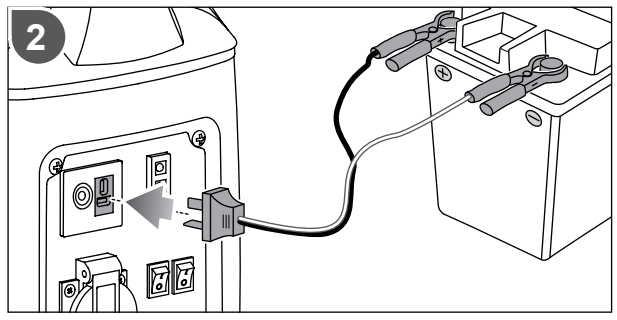
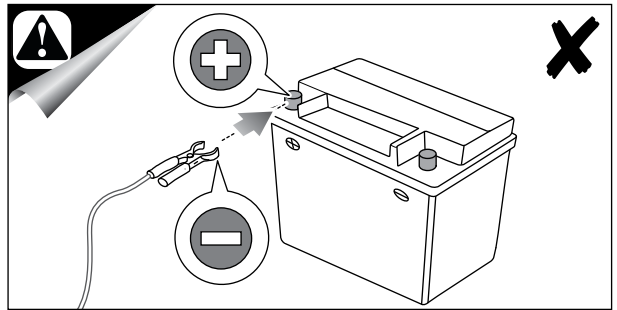
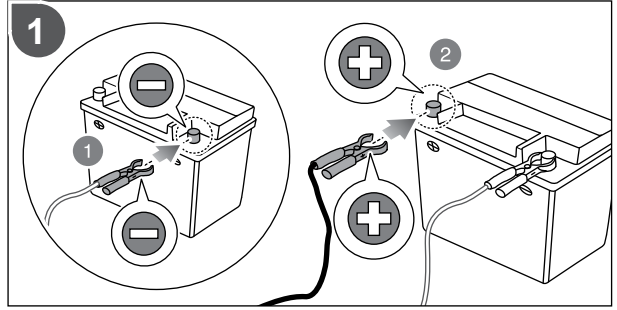
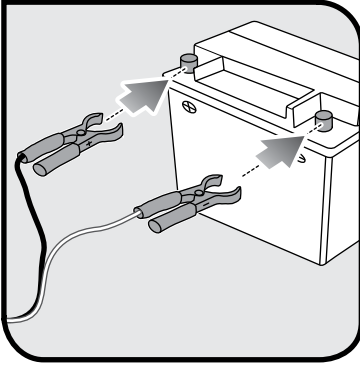
10

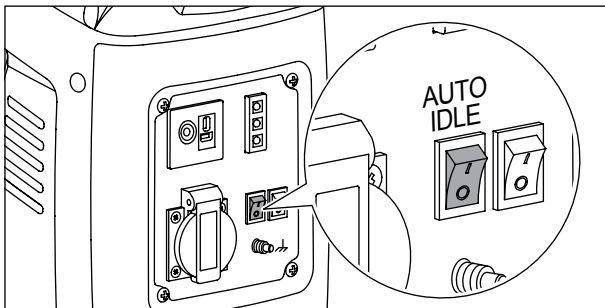


11









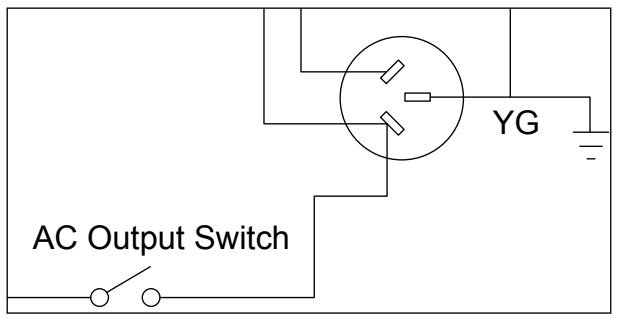
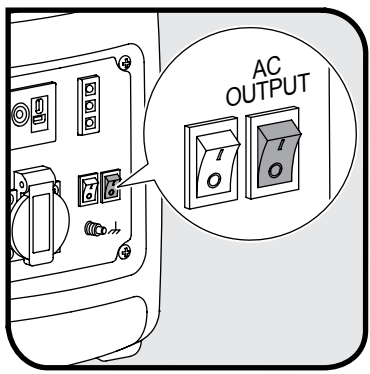
Auto-idle switch

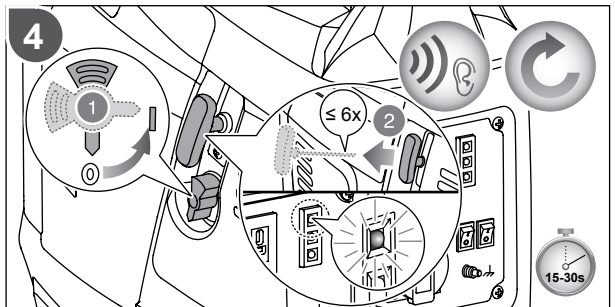
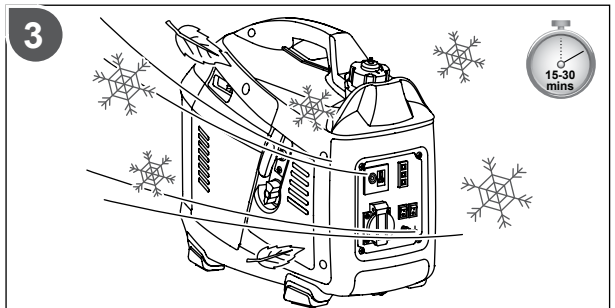
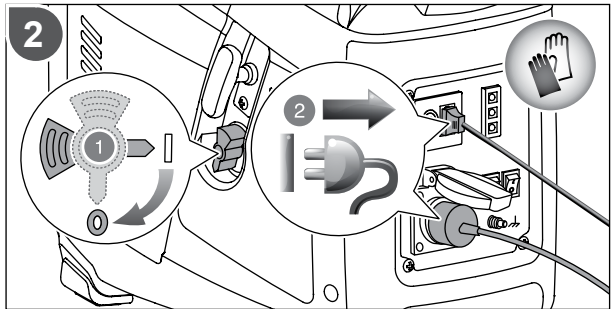
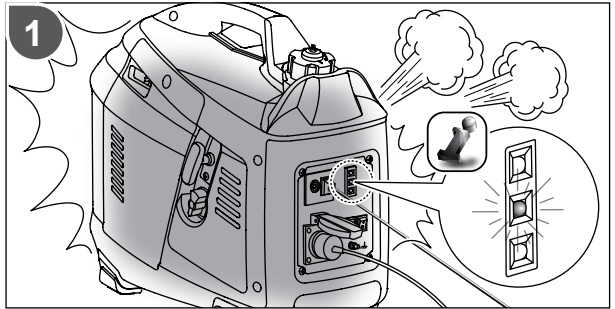
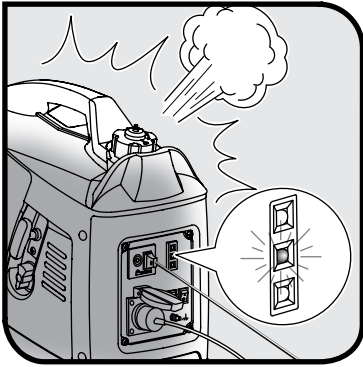
With the switch in the ON position, engine speed is automatically lowered when loads are reduced, turned OFF or disconnected. When appliances are turned ON or reconnected, the engine returns to the proper speed to power the electrical load. In the OFF position, the smart throttle system does not operate.

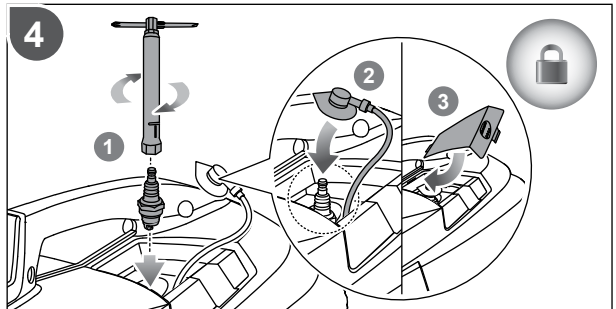
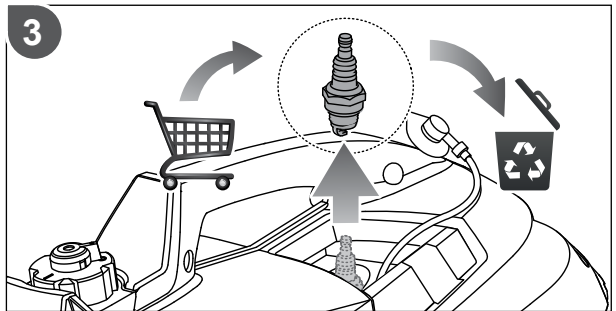
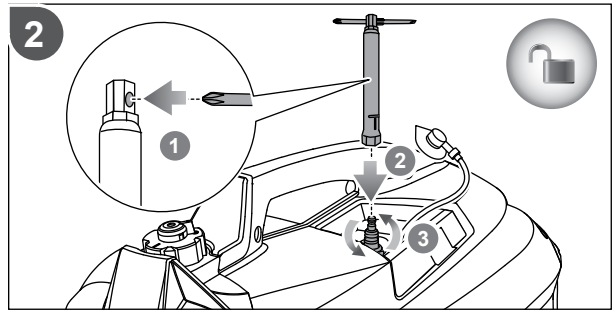
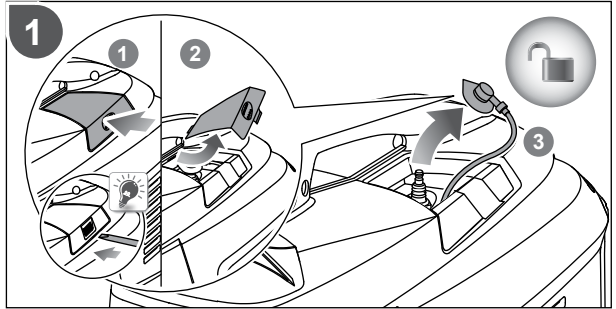
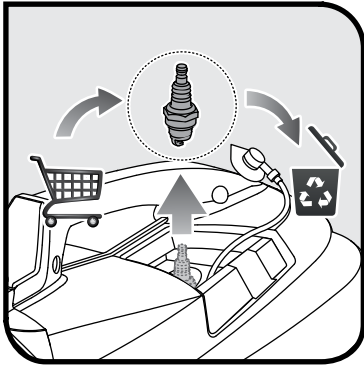
Appliances with large start-up power demands may not allow the engine to reach normal operating rpm when they are connected to the generator. Turn the smart throttle switch to the OFF position and connect the appliance to the generator. If the engine still will not reach normal operating speed, check that the appliance does not exceed the rated load capacity of the generator.

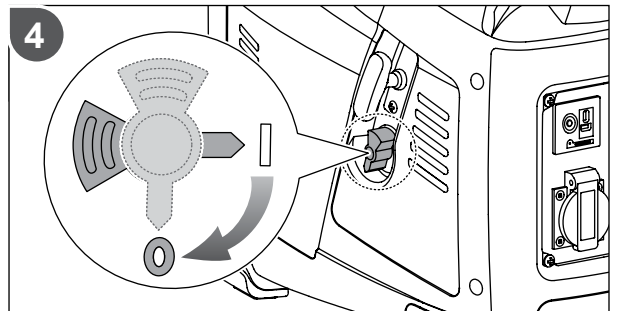
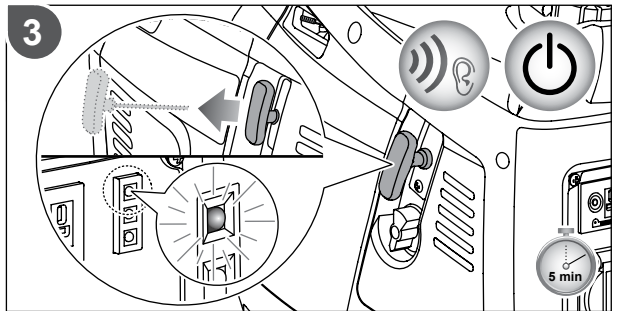
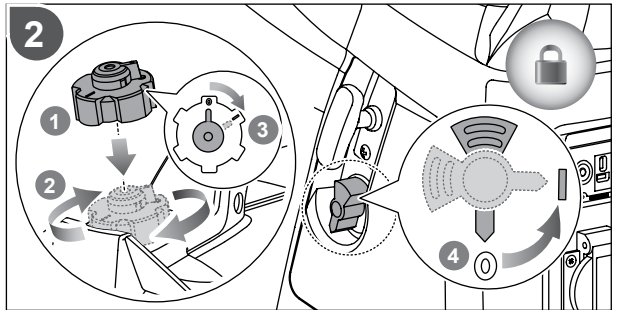
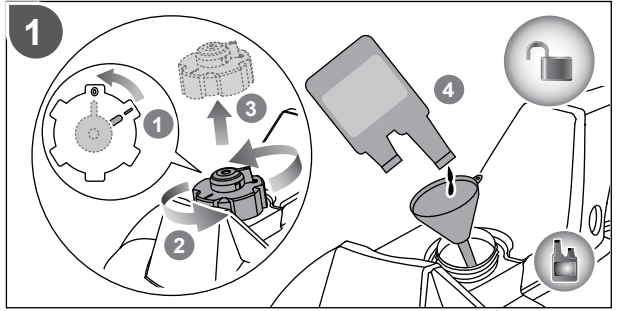
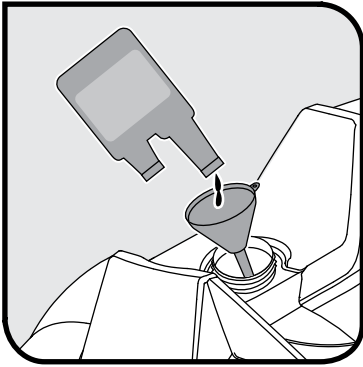


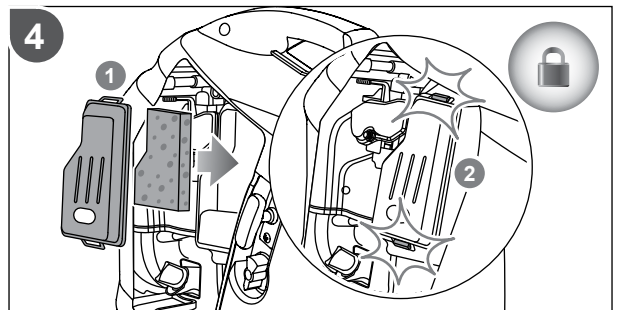
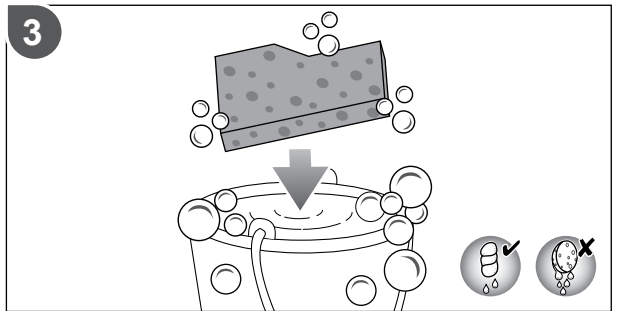
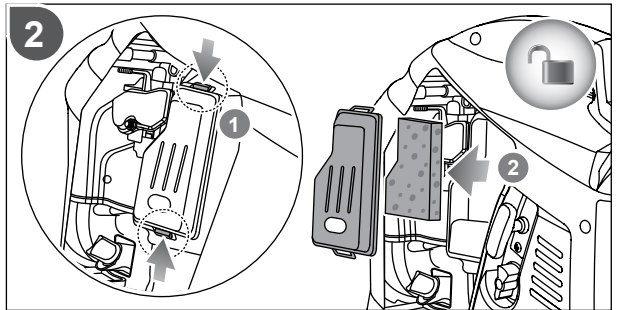
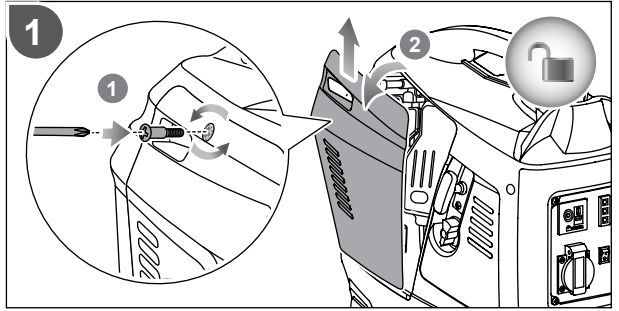
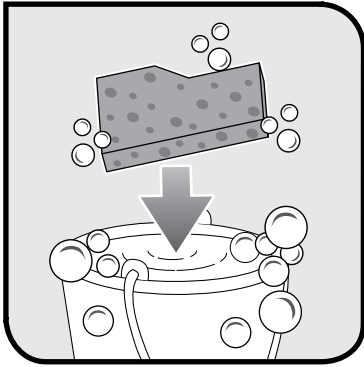
- The smart throttle system is not effective for use with appliances that require only momentary power. If the tool or appliance will be turned ON and OFF quickly, the smart throttle switch should be in the OFF position.
- When high electrical loads are connected simultaneously, turn the Smart throttle switch to the OFF position to reduce voltage fluctuation or shutdown.
- In DC operation, turn the Smart throttle switch to the OFF position.

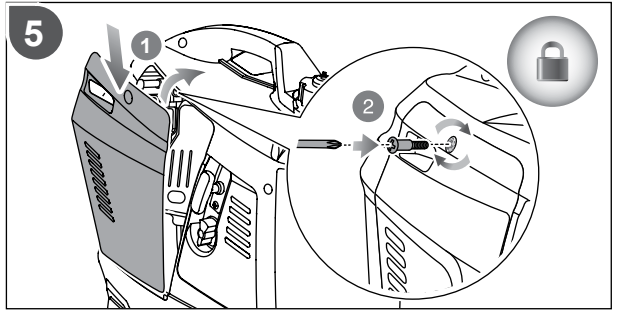


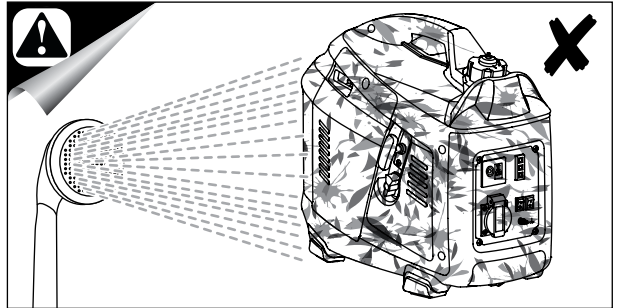
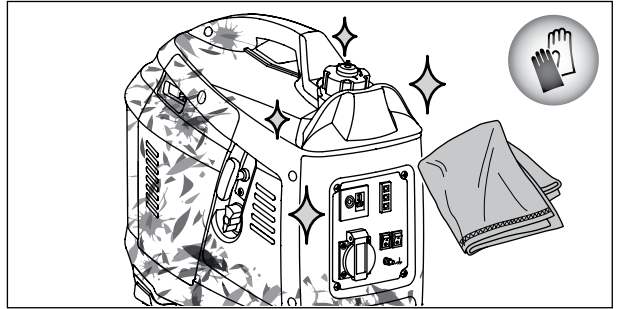
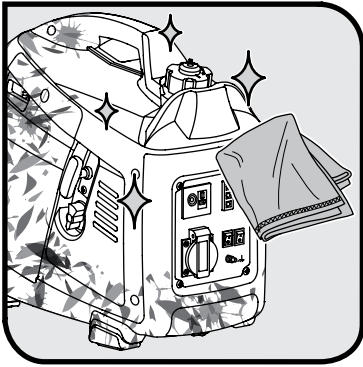


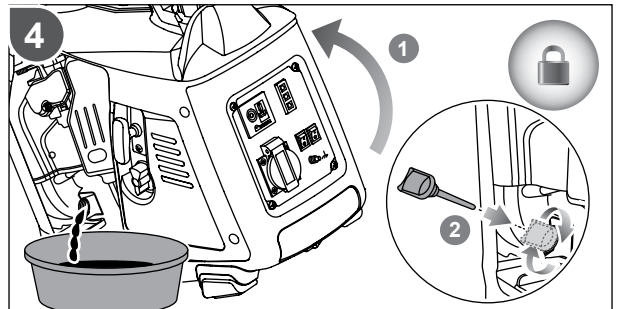
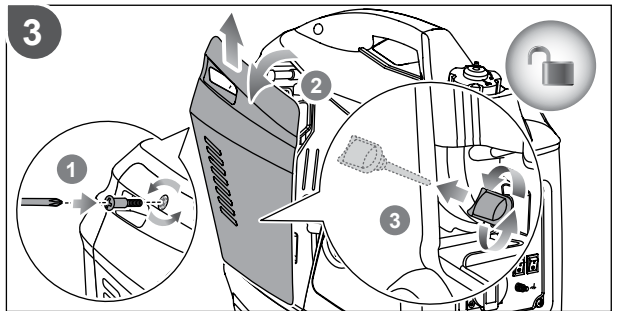
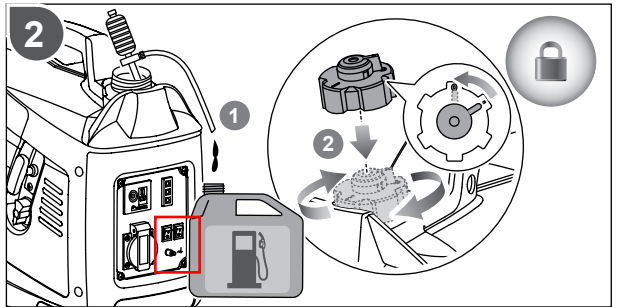
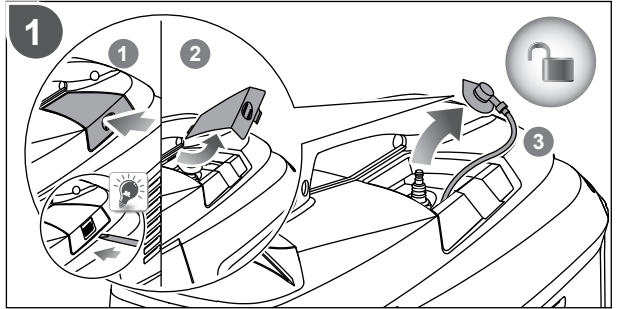
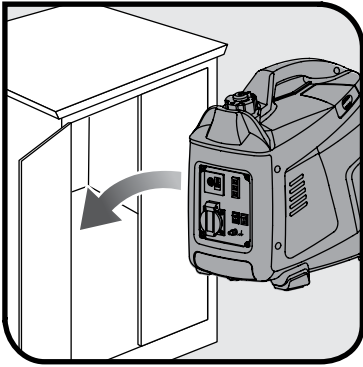


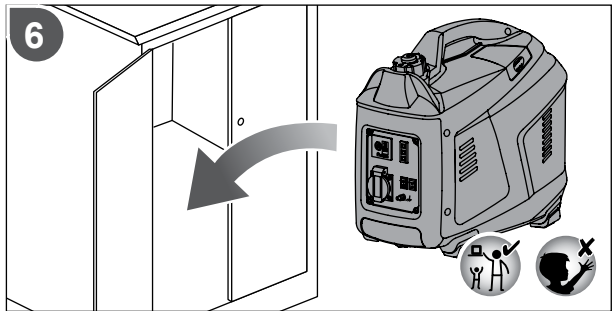
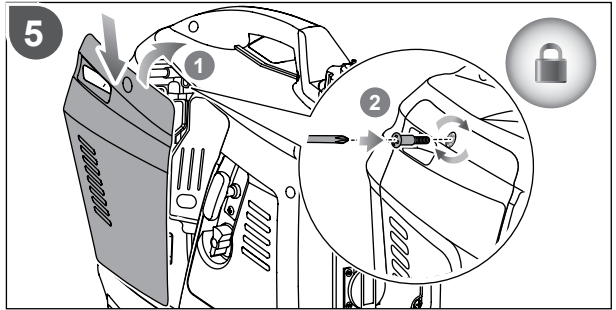












PRODUCT SPECIFICATIONS

Model RIG1000

Engine

Engine Model 144F

Engine Type OHV

Displacement 53.5 cc

Cooling System Forced Air

Compression Ratio 8.5:1

Starting System Recoil

Ignition System T.C.I.

Spark Plug NGK CR6HSA

Oil Capacity 0.25 L

Fuel Tank Capacity 2.7 L

Plug gap 0.025"

Generator

Rated Voltage 230 V AC / 12 V DC

Rated Amps 3.9 A AC / 7.5A DC

Rated Running Watts 900 W

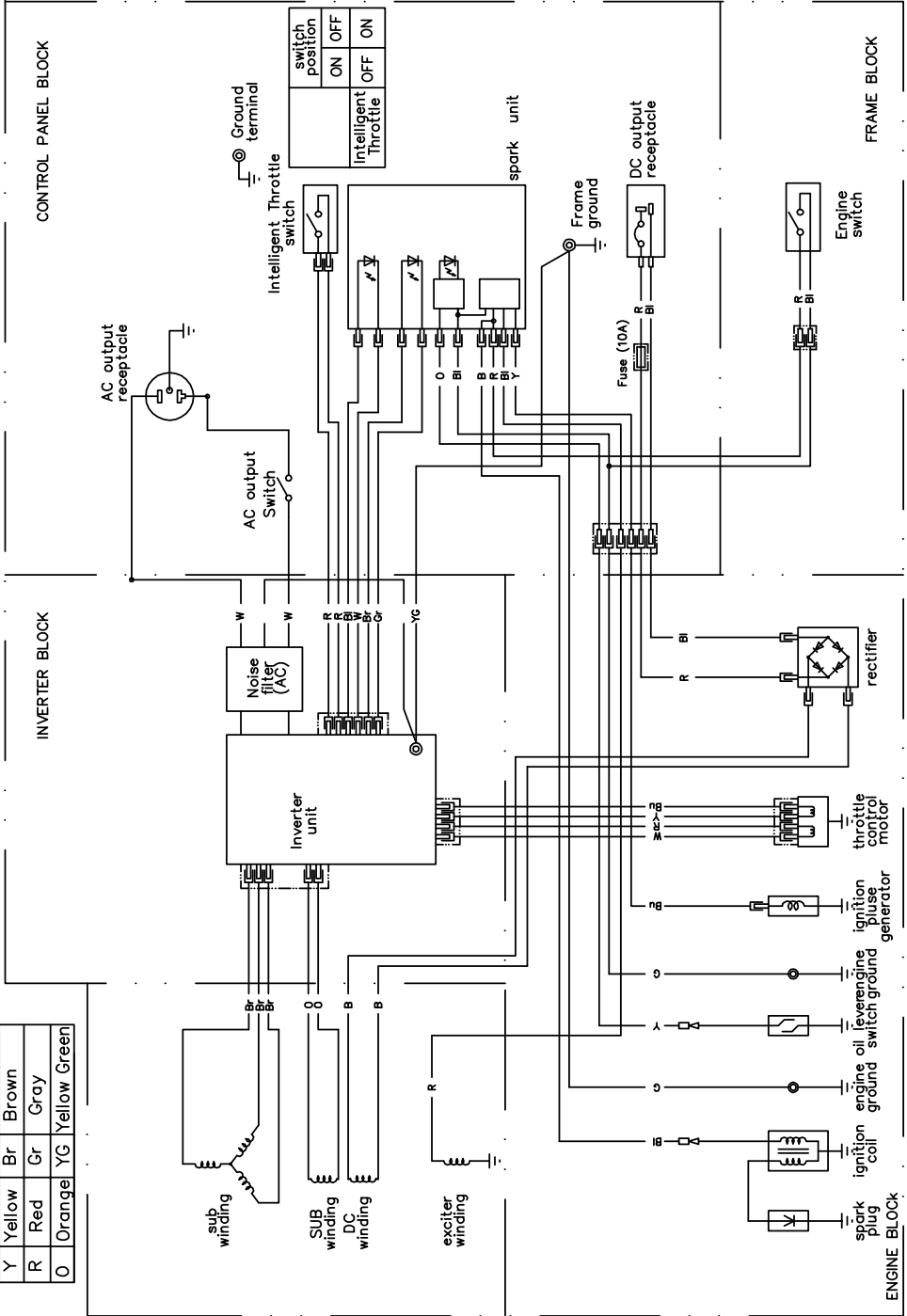
Starting Watts 1,000 W

Rated Frequency 50 Hz

Degree of Protection IP23

WIRING DIAGRAM

W	White	Bl	Black
B	Blue	P	Pink
Y	Yellow	Br	Brown
R	Red	Gr	Gray
O	Orange	YG	Yellow Green



	switch position
ON	OFF
Intelligent Throttle	ON

ENGINE BLOCK

FRAME BLOCK

CONTROL PANEL BLOCK

INVERTER BLOCK

