



# MULTISTORE

## ASSEMBLY INSTRUCTION FOR EXC-750 HS

**WARNING:** Serious injury or death can be caused by toppling furniture

**Help prevent tip-over:**

- Anchor this product to a wall or other suitable surface
- Check anchors regularly
- Avoid placing TVs on top unless the TV is also anchored
- Use drawer locks to prevent children climbing

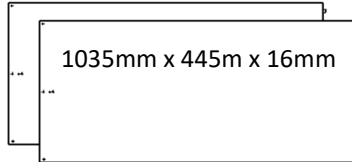


When attaching unit to wall put safety bracket in middle of unit with 5/8 pan screw then 25mm pan head screw into wall. For plasterboard without a stud it is recommended to use a plug with screw (not provided).



## PARTS IDENTIFICATION LIST

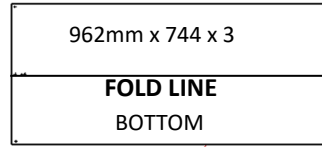
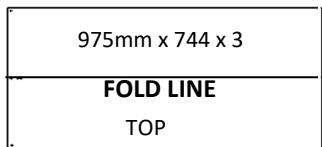
2 x TOP GABLES



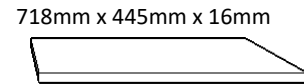
2 x BOTTOM GABLES



2 x BACKING BOARDS



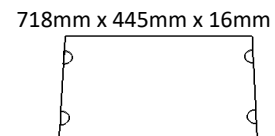
2 x FIXED SHELF



1 x BOTTOM KICK



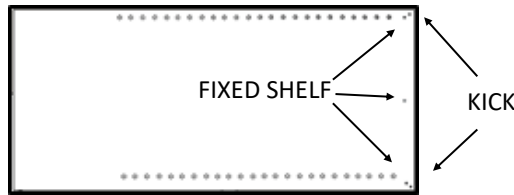
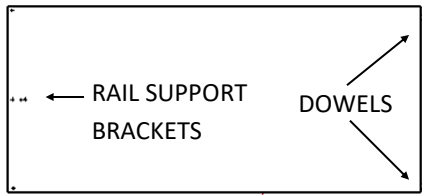
1 x CAM SHELF



NO	MODEL	DESCRIPTION	QTY	NO	MODEL	DESCRIPTION	QTY
1		CONFIRMAT SCREWS	14	7		5/8 PAN HEAD SCREWS	1
2		CAPS	14	8		25mm PAN HEAD SCREWS	1
3		DOWELS	4	9		"L" SAFETY BRACKET	1
4		BACKING NAILS	75	10		710L HANGING RAIL	1
5		RAIL FLANGES	2	11		717mm H MOULD	1
6		WHITE CAM	4	12		CAM PIN	4



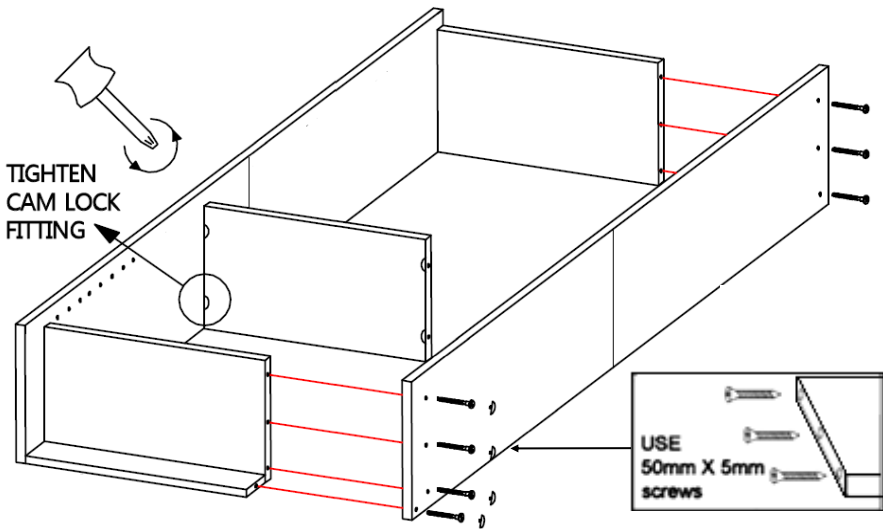
# MULTISTORE



TAKE YOUR GABLES AND LAY THEM OUT FLAT, YOU SHOULD HAVE 2 X TOP & 2 X BOTTOM GABLES. USING A LITTLE WOOD GLUE (NOT SUPPLIED) IN YOUR RE-DRILLED HOLES, INSERT YOUR WOOD DOWELS INTO 2 OF THE HOLES AND PUSH YOUR TOP INTO YOUR BOTTOM GABLE.

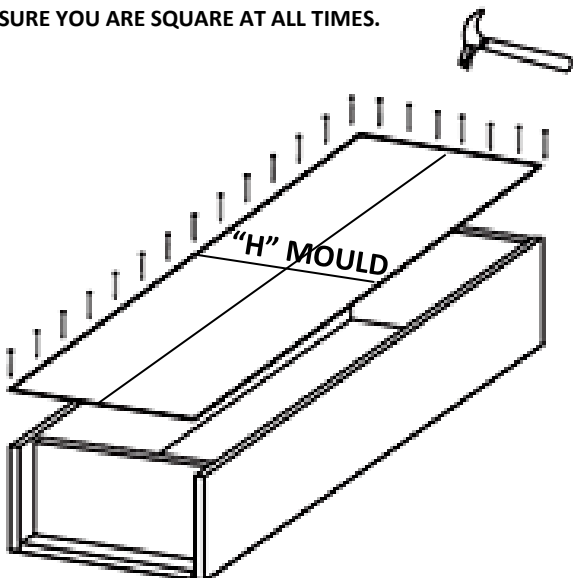
### NEXT STEP:

ALIGN YOUR SHELVES AND KICK TO THE LEFT-HAND GABLE, SCREW THEM INTO PLACE, ATTACH YOUR RIGHTHAND GABLE AND DO THE SAME.



INSERT YOUR 4 PINS INTO THE HOLE NO: THEN INSERT THE CAMS INTO THE HOLES PROVIDED ON YOUR SHELF . USING SCREW DRIVER TWIST CAM INTO LOCK POSITION.

FOLD OUT BOTH TOP AND BOTTOM BACKS PROCEED TO NAIL THEM INTO POSITION MAKE SURE YOU HAVE SLID THE 'H' MOULD YOU MAY PROCEED NAILING MAKING SURE YOU ARE SQUARE AT ALL TIMES.



YOU WILL NEED 2 X 5/8 x 6 WOOD SCREWS FOR THE NEXT STEP.

TAP INTO POSITION YOUR FLANGES INTO THE HOLES PROVIDED IF YOU WISH YOU CAN SCREW IN 1 SCREW INTO THE MIDDLE OF THE FLANGE AND SLIDE YOUR HANGING RAIL.

