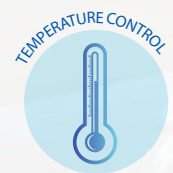


# Odyssey<sup>®</sup>

Every day's a breeze.

Live comfortably & save energy  
all year round.



# Odyssey<sup>®</sup>, a smart, energy efficient cooling system for a fresher, more comfortable home



Imagine a home that's fresher, healthier and more comfortable all year round

With a smart Odyssey air exchange system you can say goodbye to hot, uncomfortable summer nights and damp, musty winter air.

Just set it and forget it. Odyssey is the innovative and energy efficient way to create a gentle flow of fresh air throughout your home.

Using award-winning hybrid technology, Odyssey removes hot, stale and damp air from inside your home and replaces it with cooler, fresher outside air. In winter, the system can be set to draw in warmer outside air and control condensation.



Odyssey<sup>®</sup> is a proud partner with Sensitive Choice<sup>®</sup>, improving the quality of life for those with asthma and allergies.

# Creating a fresher, more comfortable home

## You'll enjoy the benefits all year round

- **In summer**, fresher, cooler air flowing through your home to create a more natural and comfortable living environment
- **A better night's sleep.** Odyssey uses the cooler night air to reduce the heat stored in the walls and floors from the hot temperatures during the day
- **In winter**, warmer outside air is brought into your home to freshen the air without changing your comfort levels
- **Reduces condensation** that could cause costly damage in your roof space. Humidity sensors allow improved condensation control all year round
- **Reduces mould** and the formation of mildew
- **Removes unwanted odours** in living areas
- **Cuts down energy consumption.** Odyssey complements air conditioning systems to reduce energy usage
- **Whisper quiet operation.** Odyssey is so quiet it won't disturb you during the day or while asleep at night
- **Easy to control.** The wall mounted touch screen panel with modern graphics let's you set and forget a full range of temperature options to control the comfort in your home
- **Data collection.** Monitor temperature data going back six months
- **Peace of mind.** The Odyssey system includes a five year warranty



# How does Odyssey® work?

Designed and manufactured in Australia, Odyssey uses award-winning wind and motor power hybrid technology that's built to handle the Australian climate

All you have to do is set your preferred temperature on the easy-to-use touch screen control. Odyssey's sensors will constantly monitor the temperature and humidity inside and outside your home, and switch Odyssey on and off to maintain your preset comfort level.



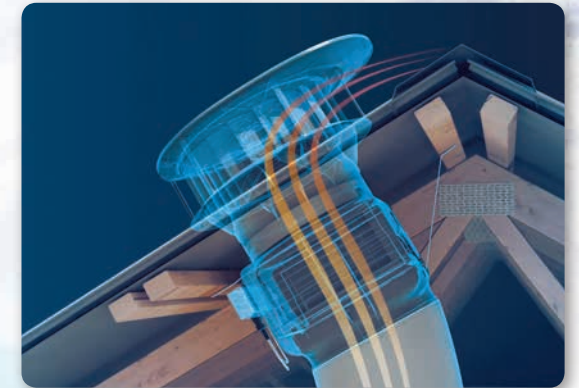
In summer at night, when the outside temperature drops below the inside temperature, Odyssey expels the hot, stifling air from your home and draws in cooler night air.

In cooler months, when your home is colder than the temperature outside, Odyssey draws in warmer outside air to freshen damp, stale air without affecting your preferred temperature levels. In addition, the humidity sensors monitor and control potentially damaging condensation in the roof space.

All year round, Odyssey quietly removes hot or damp stale air and odours from all your living areas.



Scan to watch a video of how Odyssey works



Odyssey can exchange the air in a 150m<sup>2</sup> home four to five times in an hour using around the same power as a single halogen down light.

## Odyssey can be used in most homes with adequate roof space for installation



The valve box and ducting are contained in the roof cavity with the ducting connected to a magnetically held, easy-to-clean ceiling grille designed to maximise air flow.

An internal sensor monitors the temperature and humidity inside the home while an external sensor monitors the outside temperature and humidity. Odyssey collects this information and automatically selects the preferred temperature comfort level in your home, and minimises the risk of condensation in your roof space.



The sensors and ceiling grille are white and can be painted to match your home's colour scheme.



One Odyssey system is suitable for homes up to 150m<sup>2</sup>.

Homes between 150m<sup>2</sup> and 300m<sup>2</sup> require two linked Odyssey systems, with one control panel, for optimum effectiveness.



# Easy-to-use touch screen control panel



New display screen with added features and benefits.



## Set and forget

Simply set your desired temperature settings in your living or roof areas, and Odyssey will automatically provide all the comfort you need throughout your home. There's a BOOST setting, that is manually controlled, to provide an extra burst of fresh air and get rid of odours.

## All year round comfort and protection

In summer, set your system to remove stifling hot air and freshen your home. In winter, draw in warmer, outside air to improve those cold, damp living areas. In addition, moisture and potentially damaging condensation can be controlled all year round. Relative humidity is displayed for the living area, roof space and external environment.

## Simple operation

Temperature data can be logged and viewed in 24 hour periods, going back six months, and the settings screen displays easy to understand tiles for simple operation.

# Energy saving fresh air solutions

With running costs of around \$35 a year\*, Odyssey is the answer to reduced energy consumption

Odyssey has been recognised by the Australian Institute of Refrigeration, Air Conditioning and Heating (AIRAH) for its contribution to sustainability. The system requires low energy input and reduces your reliance on air conditioning, so overall, less energy is consumed when heating or cooling your home.



## Generate more energy savings

You can make real energy savings by using a solar PV system during the day to offset the running costs of your air conditioning, and running the Odyssey system at night to keep your home cool.

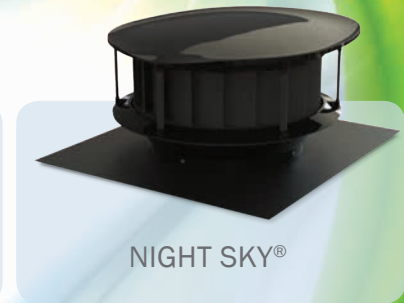
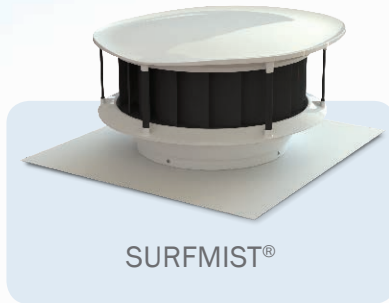
For more information visit [bradfordsolar.com.au](http://bradfordsolar.com.au)



\*Based on running costs of 28c per kW/h on a single Odyssey system

# Colours

Odyssey is available in four popular colours



# Specifications

Type: Free air cooling and warming air exchange system

Nominal system diameter	400mm	Flow rate @ $\Delta p_{\pm} = 0$	2100 m <sup>3</sup> /hr	Diverter valve	2 way, 2 position air source diverter valve
Electrical	240 VAC 50 Hz Max. 55W	Noise SPL@2m	30 dB(A)	Ducting	2m flexible metallised polyester film with helix wire support
Ventilator	Hybrid (natural and powered) backward curved centrifugal	Roof slope installation range	3° to 35°	Grille	Return air type with magnetically detachable grille
Motor	Electronic Commutating (EC) brushless motor	Roof space minimum height	0.7m (600mm rafter spacing), 0.85m (450mm rafter spacing)	Wall mounted control panel	8.8cm (3.5") colour touch screen with 15m cable
Turbine/impeller diameter	500mm	Roof space maximum height	2.4m (600mm rafter spacing), 2.55m (450mm rafter spacing)	Sensor accuracy	Temperature: $\pm 0.4^{\circ}\text{C}$ Relative humidity: $\pm 3\%$

The Odyssey system includes a five year warranty.

Your local Odyssey specialist:

For more information call 1800 332 332  
or visit [odyssey.com.au](http://odyssey.com.au)



CSR Edmonds  
Locked Bag 1345 North Ryde BC NSW 1670

\*Edmonds and Odyssey are registered trademarks of CSR Building Products Limited ABN 55 008 631 356.

The COLORBOND® steel colour swatches and images shown in this brochure have been reproduced to represent actual product colours as accurately as possible. However, we recommend checking your chosen colour against an actual sample of the product before purchasing as varying light conditions and limitations of the printing process may affect colour tones. COLORBOND®, BlueScope®, and ® Colour names are registered trademarks of BlueScope Steel Limited.