



**WE WILL  
DELIVER**



**SPECIAL  
ORDERS**

# Clotheslines



**Austral**<sup>™</sup>  
*Clothes Hoists*

Available at  
**BUNNINGS**  
**warehouse**

**Take This Brochure** to the Special Orders Desk  
or order online at [bunnings.com.au](http://bunnings.com.au)



*Austral Clotheslines is proudly 100% Australian made and owned and is now the only clothesline company manufacturing a full range of clotheslines in Australia.*

## **Why buy Austral Clotheslines?**

- Austral has an extensive range of Clothesline models and sizes
- All structural components are Australian BlueScope® Galvabond® Steel for superior strength and rust resistance
- Plastics and Cord are manufactured in Australia
- 20 Year Structural Warranty
- Offices located in each State for service and installation enquiries
- Prompt reliable service
- Spare parts are readily available
- Specialised Colour Powdercoating service available
- Australian Made and Owned since 1987

[australclotheslines.com.au](http://australclotheslines.com.au)

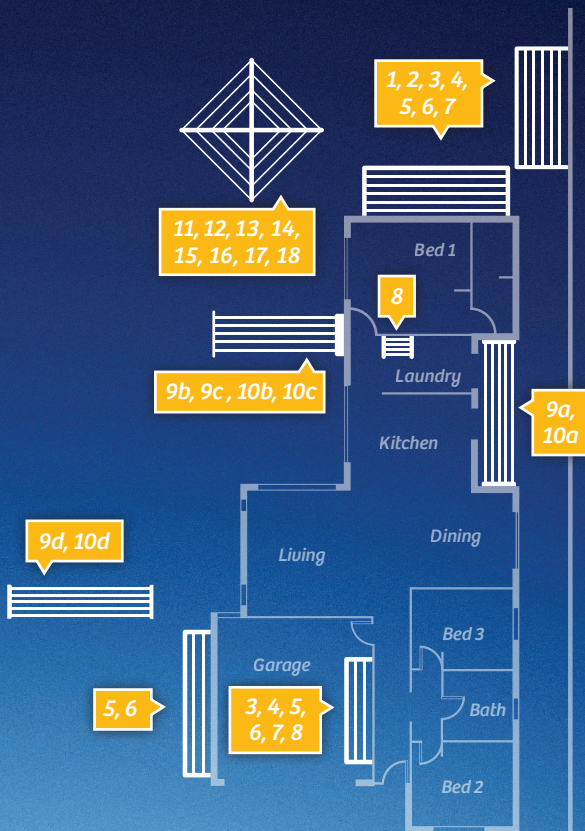




## Selecting a Clothesline Location

Give consideration to selecting a level, north or south facing site to achieve the maximum amount of sunlight, and away from view if possible.

This floor plan shows some suggested clothesline locations. See the included table on pages 3-4 for suggested area requirements and pages 6-7 for relevant mounting options.



### Available colours

CLASSIC  
CREAM

WOODLAND  
GREY

SURFMIST

HERITAGE  
GREEN

*COLORBOND® steel and ® colour names and ™ colour names are trademarks of BlueScope® Steel Limited. Not all products are available in all colours (see table on page 3-4 for products and colours available).*

	<b>Fold Down</b>	<i>Dimensions</i>	<i>Line Space</i>	<i>No. of Lines</i>	<i>C</i>
1	<i>Add-A-Line</i>	2.49m x 1.5m	35.6m	15	4
2	<i>Standard</i>	2.49m x 1.5m	28.5m	12	4
3	<i>Compact</i>	2.49m x 0.935m	28.5m	12	4
4	<i>Compact 39</i>	3.39m x 0.935m	39.3m	12	4
5	<i>Slenderline 16</i>	2.49m x 0.61m	14.2m	6	4
6	<i>Slenderline 20</i>	3.39m x 0.61m	19.6m	6	4
7	<i>Unit Line</i>	1.4m x 0.935m	15.4m	12	4
8	<i>Indoor / Outdoor</i>	1.26m x 0.6m	8.2m	7	-
	<i>Ground Mount Kit 1.3m</i>	1.3m	-	-	4
	<i>Ground Mount Kit Plated 1.3m</i>	1.3m	-	-	4
	<i>Ground Mount Kit 2.4m</i>	2.4m	-	-	4
	<i>Ground Mount Kit Plated 2.4m</i>	2.4m	-	-	4
	<i>Ground Mount Kit 3.3m</i>	3.3m	-	-	4
	<i>Ground Mount Kit Plated 3.3m</i>	3.3m	-	-	4
	<b>Retract Away</b>	<i>Cabinet Size</i>	<i>Line Space</i>	<i>No. of Lines</i>	<i>C</i>
9	<i>Retract Away 40</i>	0.82m x 0.125m	10-40m	5	4
10	<i>Retract Away 50</i>	0.82m x 0.125m	10-50m	5	4
	<i>Retract Away Post</i>	-	-	-	4
	<i>Retract Away Post Plated</i>	-	-	-	4
	<i>Retract Away Mount Bar</i>	-	-	-	4
	<i>Ground Socket (black plastic)</i>	-	-	-	-
	<b>Fold Away Rotaries</b>	<i>Head Diameter</i>	<i>Line Space</i>	<i>No. of Lines</i>	<i>C</i>
11	<i>Fold Away 45</i>	3.3m	47.1m	7	4
12	<i>Fold Away 51</i>	3.8m	51.1m	7	4
	<b>Fixed Rotaries</b>	<i>Head Diameter</i>	<i>Line Space</i>	<i>No. of Lines</i>	<i>C</i>
13	<i>Elite 4</i>	4m	40.4m	6	-
14	<i>Deluxe 4</i>	4m	40.4m	6	4
15	<i>Deluxe 5</i>	5m	50m	6	4
16	<i>Super 4</i>	4m	40.4m	6	4
17	<i>Super 5</i>	5m	50m	6	4
18	<i>Super 6</i>	6m	64.5m	7	4



<i>f</i>	<i>Classic Cream</i>	<i>Woodland Grey</i>	<i>Surfmist</i>	<i>Suggested Area</i>	<i>Suitable For</i>
	4510523	4510522	74747	2.6m x 1.8m	1-5 people
	4510525	4510524	74748	2.6m x 1.8m	1-4 people
	4510527	4510526	74749	2.6m x 1.2m	1-4 people
	4510948	4510949	74750	3.5m x 1.2m	1-6 people
	4510530	4510529	74751	2.6m x 0.8m	1-2 people
	4510532	4510531	74752	3.5m x 0.8m	1-2 people
	4510534	4510533	74753	1.5m x 1.2m	1-2 people
	-	-	74754	1.4m x 0.7m	1-2 people
	4510542	4510541	74757	-	-
	4510545	4510543	74758	-	-
	4510538	4510537	74755	-	-
	4510540	4510539	74756	-	-
	4510547	4510546	74759	-	-
	4510549	4510548	74760	-	-
<i>f</i>	<i>Classic Cream</i>	<i>Woodland Grey</i>	<i>Black</i>	<i>Suggested Area</i>	<i>Suitable For</i>
	4510551	4510550	-	1.3m x 2-8m	1-6 people
	4510554	4510553	-	1.3m x 2-10m	1-6 people
	4510556	4510555	-	-	-
	4510558	4510557	-	-	-
	4510561	4510559	-	-	-
	-	-	4514213	-	-
<i>f</i>	<i>Classic Cream</i>	<i>Woodland Grey</i>	<i>Heritage Green</i>	<i>Suggested Area</i>	<i>Suitable For</i>
	4510575	4510562	4514409	4.5m x 4.5m	1-6 people
	4510564	4510563	4514001	5m x 5m	1-6 people
<i>f</i>	<i>Galvanised</i>		<i>Heritage Green</i>	<i>Suggested Area</i>	<i>Suitable For</i>
	-		4514425	6m x 6m	1-5 people
	4510566		-	6m x 6m	1-5 people
	4514174		-	7m x 7m	1-6 people
	4510565		-	6m x 6m	1-5 people
	4512211		-	7m x 7m	1-6 people
	4512229		-	8m x 8m	1-6+ people



*Add-A-Line Fold Down in Woodland Grey*

## **Fold Down Clotheslines**

### **A full range to suit any requirement**

Austral **Fold Downs** have more line space for greater drying flexibility and fold down to a tiny 6-8cm side profile. The side arms are all tubular steel including the front bent corners to ensure strength and durability. All Austral **Fold Downs** are supplied with pre-assembled side arms to make installation a breeze.

Austral **Fold Downs** may be reduced in length by shortening the front bar during installation. Whether you have a large or small space available, there is a **Fold Down** to suit you.

**Add-A-Line** A full family sized line with two folding frames.

**Standard** A full family sized line with one large folding frame.

**Compact** A compact family sized line with one folding frame.

**Compact 39** An extra wide compact family sized line with one folding frame.

**Slenderline 16** A narrow line ideal for smaller spaces.

**Slenderline 20** A long narrow line perfect for side paths or restricted areas.

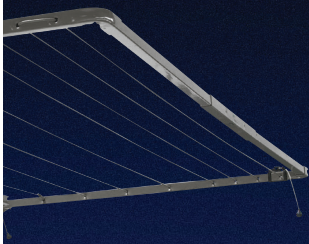
**Unit Line** A small line perfect for apartments, units or as a second undercover line.

**Indoor / Outdoor Line** An 8m eco friendly line for the smallest of spaces. Can fit discreetly over a bench or laundry tub.

**Ground Mount Kits** are available for soil installations or **Plated Ground Mount Kits** for hard surface fixing.

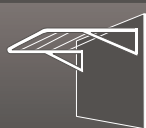
[australclotheslines.com.au](http://australclotheslines.com.au)



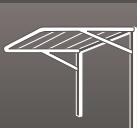


Cords are easily tightened using **Patented Tension Lock**

### **Fold Down** – Mounting Options



Wall Mount



Ground Mount\*\*

\* Freestanding options: **Ground Mount Kit** for installation into soil; **Ground Mount Plate Kit** for installation onto structurally sound hard surfaces i.e. cement slab. Kits include 2 posts, 1 back bar and fittings and are available to suit all Fold Downs except the Indoor/Outdoor line.



Indoor / Outdoor Line in Surfmist

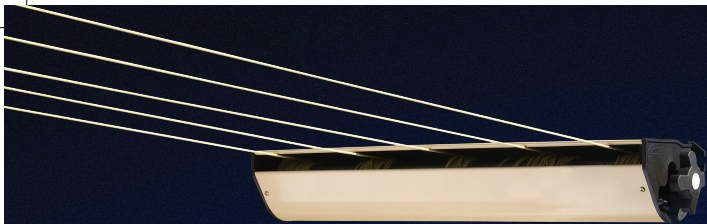
### Available colours

CLASSIC  
CREAM

WOODLAND  
GREY

SURFMIST

COLORBOND® steel and ® colour names and ™ colour names are trademarks of BlueScope® Steel Limited. Not all products are available in all colours (see table on pages 3-4 for products and colours available).



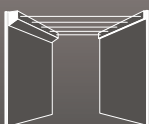
*Retract Away 40 in Classic Cream*

## **Retract Away Clothesline** ***Clotheslines that extend up to 8 or 10m***

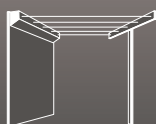
The **Retract Away 40** is a retractable clothesline that extends from 2 to 8 metres and offers up to 40 metres of line space.

The **Retract Away 50** extends from 2 to 10 metres and offers up to 50 metres of line space. Simply pull the lines out to the required length and attach to a wall or post. When you're finished, retract the lines back into the cabinet.

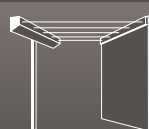
### **Retract Away – Mounting Options**



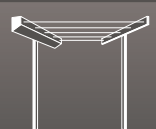
**a. Wall to Wall**



**b. Wall to Post**



**c. Post to Wall**



**d. Post to Post**

- a. Wall to Wall - requires Cabinet only.
- b. Wall to Post - requires Cabinet, 1 x Post and 1 x Ground Socket (optional).
- c. Post to Wall - requires Cabinet, 1 x Post, 1 x Ground Socket (optional) and 1 x Mounting Bar.
- d. Post to Post - requires Cabinet, 2 x Posts, 2 x Ground Sockets (optional) and 1 x Mounting Bar.

### **Available colours**

**CLASSIC  
CREAM**

**WOODLAND  
GREY**

*COLORBOND® steel and ® colour names and ™ colour names are trademarks of BlueScope® Steel Limited. Not all products are available in all colours (see table on pages 3-4 for products and colours available).*

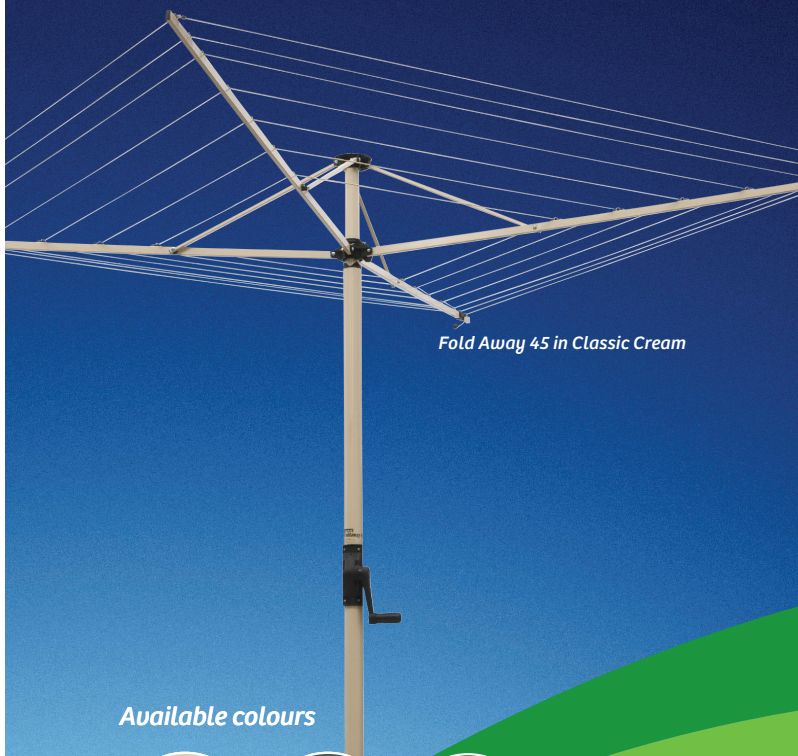


## **Fold Away Rotaries** *For the largest of family wash loads*

The **Fold Away** Rotaries are made from strong Galvanised Steel and are available in 3 colours. The **Fold Away** models are easily folded and removed from the Ground Socket (included) as required. The Rotary heads are pre-assembled and corded for easy installation.

The outer line on a **Fold Away 45** measures 228cm in length. The **Fold Away 51** features coat hanger hooks on each arm and measures 257cm in length on the outer line.

[australclotheslines.com.au](http://australclotheslines.com.au)



*Fold Away 45 in Classic Cream*

### *Available colours*

CLASSIC  
CREAM

WOODLAND  
GREY

HERITAGE  
GREEN

*COLORBOND® steel and ® colour names and ™ colour names are trademarks of BlueScope® Steel Limited. Not all products are available in all colours (see table on pages 3-4 for products and colours available).*



## Fixed Rotaries

### *The original galvanised rotary hoist*

The **Original Super Rotary** hoist is built to last with a metal gear case, strong galvanised tubing and galvanised wire.

The **Deluxe Rotary** hoist is made of long lasting galvanised steel and wire. The **Deluxe Rotary** range features a one piece helical column with plastic gear case.

The **Elite 4** is a fixed rotary with 40m of line space and is made from long lasting galvanised steel and galvanised wire. This line offers all the features of a **Deluxe 4** with all tubular steel powdercoated in Heritage Green.

[australclotheslines.com.au](http://australclotheslines.com.au)



*Original Super Galvanised Rotary*

### *Available colours*



*COLORBOND® steel and ® colour names and ™ colour names are trademarks of BlueScope® Steel Limited. Not all products are available in all colours (see table on pages 3-4 for products and colours available).*



# Accessories

Product	Suitable For	Cream	Grey	Black	Galvanised
40m PVC Cord	All Fold Down Lines	4510568	4510569	-	-
60m PVC Cord	Suitable for all Fold Away Rotary Lines	4510570	4510571	-	-
450m PVC Cord (roll)	Ideal for contractors cut length sales	4510572	4510573	-	-
Ground Socket	Suitable for use with Fold Away 45 and 51 Rotaries and Retract Away Posts	-	-	4514213	-
Fold Away Retainer Clips 14 pack	Suitable for Fold Away 45 and Fold Away 51	-	-	4510577	-
Fold Away Retainer Clips 8 pack	Suitable for Fold Away 45 and Fold Away 51	-	-	4513924	-
Helical Handle Assembly (complete)	Suitable for Fold Away 45 and 51, Deluxe 4 and 5, Elite 4, Special 4 and Ezy Fold	-	-	4510579	-
Wire 50m	Suitable for 40m Rotaries: Elite 4, Deluxe 4 and Super 4 Fixed Rotaries	-	-	-	4510574
Wire 70m	Suitable for 50m and 60m Rotaries: Deluxe 5, Super 5 and 6 Fixed Rotaries	-	-	-	4510576

# How It Works

---

It's as simple as 1,2,3! Follow the steps shown to purchase or order your product. If you need further advice, speak to a team member at the Special Orders Desk in-store.

---

## 1. Select The Product You Want

View the extensive range available in this brochure or online. Use the number shown below to order your product online or in-store.

<i>Classic Cream</i>	<i>Woodland Grey</i>
4510523	4510522

---

## 2. Order at the Special Orders Desk or Online

After you have selected the product you want, take this brochure to the Special Orders Desk or order online at [bunnings.com.au](http://bunnings.com.au)

---

## 3. Get It Home

### We Will Deliver

Delivery to your home or site can be arranged online or in-store when purchasing your products.

### Pick-Up In-Store

If you decide to pick-up in-store and need help to get it home, you can:

- borrow a courtesy trailer
- hire a vehicle

Check with your local Bunnings store for availability.

---

