

# SANIACCESS PUMP

SA 79

The SANIACCESS Pump is used to install a complete kitchen or laundry. Two service panels on top of the unit allows fast and easy access to internal components.

PUMPING DISTANCE UP TO 5M



2 YEAR WARRANTY



Super quiet

PUMPING DISTANCE UP TO 50M



## POSSIBLE CONNECTIONS

Dishwasher, washing machine, shower, vanity basin, bath, kitchen sink

## VERTICAL PUMPING HEIGHT

Up to 5m

## HORIZONTAL PUMPING DISTANCE

Up to 50m (refer to pumping graph below)

## RECOMMENDED DISCHARGE PIPE DIAMETER

25mm uPVC Pressure Pipe

## NORMAL OPERATING TEMPERATURE

35°C and max 60°C for short periods

## ELECTRICAL POWER SUPPLY

220-240V / 50Hz

## MOTOR POWER RATING

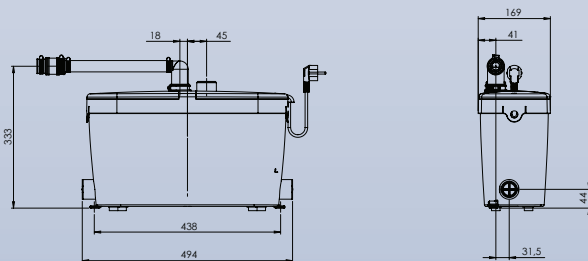
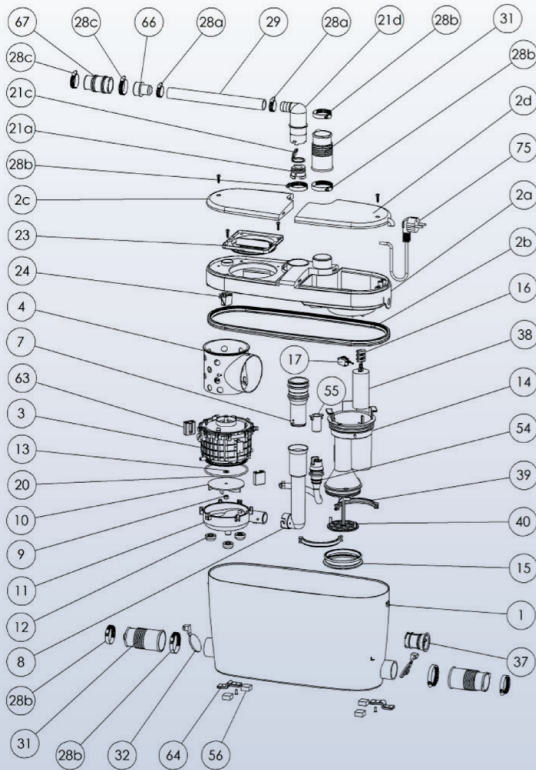
400W

## OVERALL MEASUREMENTS (W x H x D)

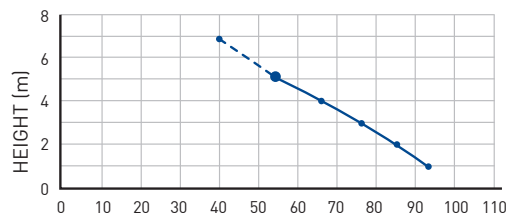
494 x 333 x 169mm

## ACCESSORIES

- Factory pre mounted non return valve (supplied)
- All horizontal pipework requires a minimum of 1:100 fall



## FLOW RATE PERFORMANCE



## PUMPING DISTANCE PERFORMANCE

Increase size of horizontal run by one pipe size after 5m

