

# SANIACCESS 3

SA 81

The SANIACCESS 3 is used to install a complete bathroom. Two service panels on top of the unit allows fast and easy access to internal components.



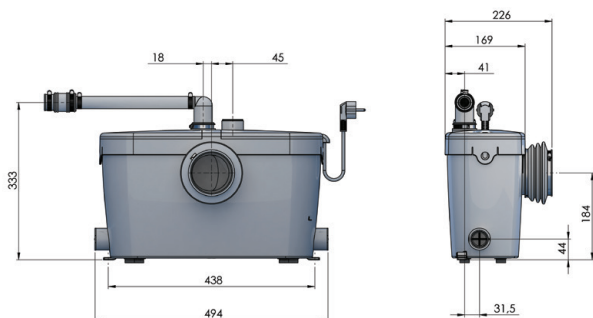
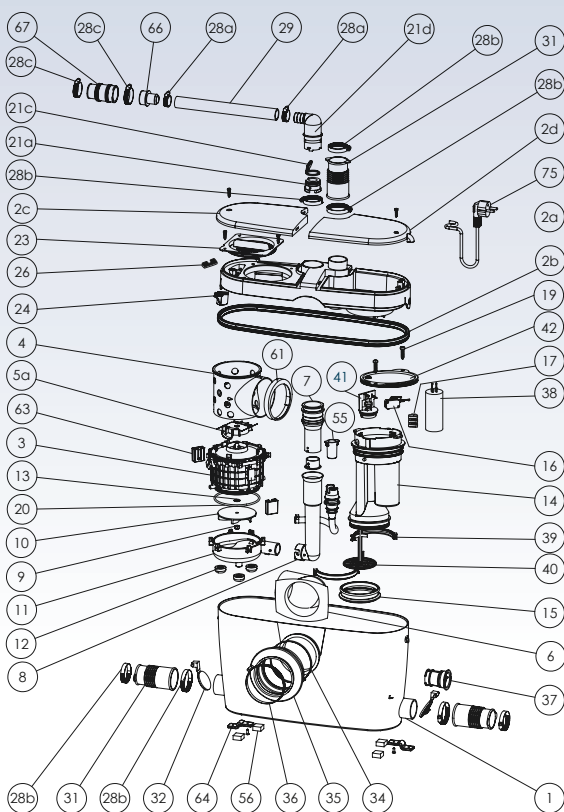
PUMPING DISTANCE UPTO **5M**

**2 YEAR WARRANTY**



Super quiet

PUMPING DISTANCE UPTO **100M**



### POSSIBLE CONNECTIONS

WC, vanity, shower, bath

### VERTICAL PUMPING HEIGHT

Up to 5m

### HORIZONTAL PUMPING DISTANCE

Up to 100m (refer to pumping graph below)

### RECOMMENDED DISCHARGE PIPE DIAMETER

20mm uPVC Pressure Pipe

### NORMAL OPERATING TEMPERATURE

35°C

### ELECTRICAL POWER SUPPLY

220-240V / 50Hz

### MOTOR POWER RATING

400W

### OVERALL MEASUREMENTS (W x H x D)

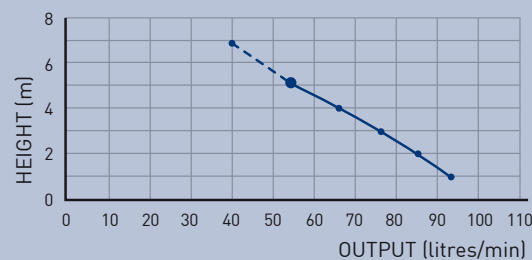
494 x 333 x 169mm

### ACCESSORIES

- Factory pre mounted non return valve (supplied) (Isolation valve not supplied)

All horizontal pipework requires a minimum of 1:100 fall

### FLOW RATE PERFORMANCE



### PUMPING DISTANCE PERFORMANCE

Increase size of horizontal run by one pipe size after 5m

