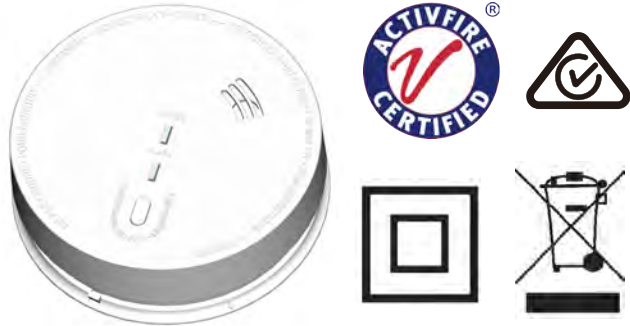


# Smoke Alarm User Manual

## Model number: FP240V

Thank you for purchasing our smoke alarm. Please take a few minutes to read the user's manual thoroughly and familiarize yourself and your family with its operation. And save it for future reference.



## Product Specifications:

- **POWER:** AC220~240V 50Hz with 9V battery backup.
- **OPERATION CURRENT:** <100mA
- **ALARM VOLUME:** > 85dB(A) at 3 meters.
- **ALARM SENSITIVITY:** 0.127~0.208dB/m
- **SAME PUSH TEST BUTTON TO ACTIVATE SILENCE (HUSH) CONTROL**
- **HUSH TIME:** approx 8 minutes
- **INTERCONNECTION:** up to 12 detectors
- **BATTERY LIFE:** above one year
- **COMPLY WITH:** AS3786:2014
- **SOUND PATTERN:** ISO8201(BI 0.5s - pause 0.5s - BI 0.5s - pause 0.5s - BI 0.5s - pause 1.5s, with the RED LED flash, repeat this alarm pattern)

## Description:

The unit is a photoelectric AC220~240V with 9V DC battery backup smoke alarm. With the photoelectric technology, it is more sensitive to detecting slow smolder fires which general thick, black smoke, little heat and may smolder for hours before bursting into flames. The smoke alarm does not contain the radioactive material which is harmless to the environment.

The smoke alarm should be installed in every room (except the bathroom), and every other area of the home, making sure the people in the home will be able to hear and respond to the alarm sound. For minimum protection you should fit an alarm in the hallway between the living areas and sleeping areas. Place the unit near to the living areas as possible and ensure the alarm is audible when the bedrooms are occupied.

Typical single storey dwelling with recommended:

Install a smoke alarm on the ceiling inside each bedroom and in the hallway outside each separate sleeping area. If a bedroom area hallway is more than 30 feet long, install a smoke alarm at each end. If there is a basement: install a smoke alarm on the basement ceiling at the bottom of the stairwell.

Typical multi-storey dwelling with recommended protection.

Install a smoke alarm on the ceiling inside each bedroom and in the hallway outside each separate sleeping area. If a bedroom area hallway is more than 30 feet long, install a smoke alarm at each end install a smoke alarm at the top of a first – to- second floor stairwell.

## Important Safety Information:

1. The test button accurately tests smoke alarm functions. Do not use any other test method. Test smoke alarm weekly to ensure proper operation.
2. When the smoke alarm is alarming, if you're sure it isn't a really alarm, open windows or fan the air around smoke alarm for silence it.
3. The apparatus shall not be exposed to dripping or splashing and that no objects filled with liquids, such as vases, shall be placed on the apparatus.
4. A non-pure sinusoidal power sources is not suitable for this smoke alarm (e.g. derived from square-wave invertors).
5. This smoke alarm is powered by AC 220~240V. This source power is danger to human body. The smoke alarm should be installed only by a licensed, qualified electrician. Observe and follow all local and national electrical and building codes for installation.
6. This smoke alarm is designed to be used inside a single family only. In multifamily buildings, each individual living unit should have its own smoke alarms. Do not install in non-residential buildings. And this smoke alarm is not a substitute for a complete alarm system.
7. Install a smoke alarm in every room and on every level of the home. Smoke may not reach the smoke alarm for many reasons. For example, if a fire starts in a remote part of the home, on another level, in a chimney, wall, roof, or on the other side of a closed door, smoke may not reach the smoke alarm in time to alert household members. A smoke alarm will not promptly detect a fire except in the area or room in which it is installed.
8. Smoke alarm may not alert every household member every time. The alarm horn is loud in order to alert individuals to a potential danger. However, there may be

some circumstances where a household member may not hear the alarm (i.e. outdoor or indoor noise, sound sleepers, drug or alcohol usage, the hard of hearing, etc.). If you suspect that this smoke alarm may not alert a household member, install and maintain specialty smoke alarms. Household member must hear the alarm's warning sound and quickly respond to it to reduce the risk of damage, injury, or death that may result from fire, If a household member is hard of hearing, install special smoke alarms with lights or vibrating devices to alert occupants.

9. Smoke alarms can only sound their alarms when they detect smoke or detect combustion particles in the air. They do not sense heat, flame, or gas. This smoke alarm is designed to give audible warning of a developing fire. However, many fires are fast - burning, explosive, or intentional, and others are caused by carelessness or safety hazards. In this circs, Smoke may not remake the unit alarm **QUICKLY ENOUGH** to ensure safe escape.
10. Smoke alarms have limitations. This smoke alarm is not foolproof and is not warranted to protect lives or property from fire. Smoke alarms are not a substitute for insurance. Homeowners and renters should insure their lives and property. In addition, it is possible for the smoke alarm to fail at any time. For this reason, you must test the smoke alarm weekly and replace unit after 10 years.

### **Battery Specification:**

Voltage: DC 9V (Alkaline. Carbon Zinc, Lithium battery)

Gold Peak: GP1604S; (Carbon Zinc Battery)

Gold Peak: GP1604A; (Alkaline Battery)

Raymax : 6LR61; (Alkaline Battery)

EVE: CR9V/P. (Lithium battery)

### **Replace Battery:**

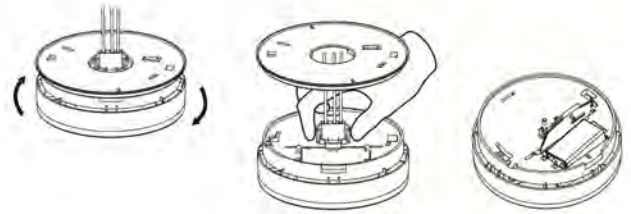
1: Replace the battery:

- ① Remove the locking plug between bracket and bottom cover. (See Diagram 1)



**Diagram 1**

- ② Remove the alarm body from the bracket.
- ③ Squeeze the locking arms on the sides of the AC Quick connector while pulling the connector away from the bottom of the alarm.
- ④ After alarm has been removed, you can open the battery cover and replace with new battery. (See Diagram 2)

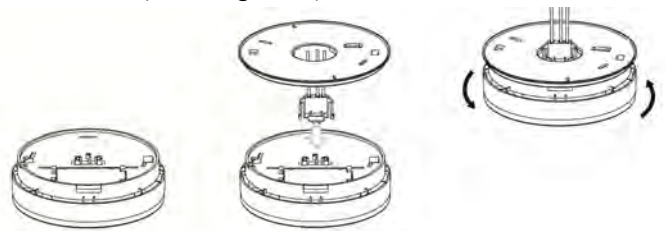


**Diagram 2**

**Warning: AC power should be turned off at this stage.**

2: After you replaced the battery:

- ① Close the battery cover,
- ② then plug the AC QUICK CONNECTOR into the back of the alarm, making sure that the locks on the connector snap into place.
- ③ Fit the alarm body on bracket and turn the alarm body clockwise (See Diagram 3).



**Diagram 3**

- ④ Insert locking plug into the gap between bracket and bottom cover (See Diagram 4).



**Diagram 4**

- 3: Turn on the AC power, in the meantime, the green LED lights up. Then test smoke alarm using test button, the sound pattern is 3 short beeps-pause 1.5 seconds, cycle this pattern till release the test button.

Then unit will goes into hush mode of 8 minutes. During this period, the RED LED will flash once every 8 seconds. It will go to normal work status and flash once every 32 seconds after 8 minutes. When you push the test button, if there's no sound output, it means that the smoke alarm is faulty or the installing operation is wrong, and you can get helps from the section: "trouble shooting".

**CAUTION: Test the smoke alarm for correct operation using the test facility whenever the battery is replaced.**

**WARNING: The AC power is danger. When you replace battery, you must make sure the AC power is turned off.**

**Do Not Install Smoke Alarms in the Following Places:**

1. In the garage. Products of combustion are present when you start your automobile.
2. Less than 20" (50cm) from the peak of an "A" frame type ceiling. (See Diagram 4)
3. In an area where the temperature may fall below 0°C or rise above 40°C, such as garages and unfinished attics.
4. In dusty areas. Dust particles may cause nuisance alarm or failure to alarm.
5. In very humid areas (greater than 93% R.H.). Moisture or steam can cause nuisance alarms.
6. In insect-infested areas.
7. Smoke alarms should not be installed within 3 ft (0.9m) of the following: the door to a kitchen, the door to a bathroom containing a tub or shower, forced air supply ducts used for heating or cooling, ceiling or whole house ventilating fans, or other high air flow areas.
8. Kitchens. Normal cooking may cause nuisance alarms. If a kitchen alarm is desired, it should have an alarm silence feature or be a photoelectric type.
9. Near fluorescent lights. Electronic "noise" may cause nuisance alarms.
10. Smoke alarms are not to be used with detector guards. Unless the combination (alarm and guard) has been evaluated and found suitable for that purpose.

## **Operation:**

### **Testing:**

Test the unit to ensure proper operation by pressing the Test button for at least 5 seconds, this will sound the alarm if the electronic circuitry, horn and battery are working properly. If no alarm sounds, the unit has a defective battery or other failure. Refer to "Trouble shooting" section for a solution.

DO NOT use an open flame to test your alarm, you could damage the alarm or ignite combustible materials and start a fire.

**CAUTION:** Due to the loudness (85 decibels) of the alarm, always stand an arms-length away from the unit when testing.

Test the alarm weekly to ensure proper operation. Erratic or low sound coming from your alarm may indicate a defective alarm

**NOTE: WEEKLY TESTING IS REQUIRED.**

### **LED indicators:**

Illumination of the Green LED indicates that the alarm is receiving AC power.

This alarm is equipped with a red LED indicator, with two modes of operation.

Red LED-Flashing every 32 seconds: indicates that the smoke alarm is operating properly.

RED LED-Flashing: when the Test button is pressed or the smoke alarm senses particles of combustion and goes into alarm (constant pulsating sound), the red LED will flash once per second. The flashing LED and pulsating alarm will continue until the test button is released or the air is cleared.

RED LED-Alarm silencer (Hush mode) indication: The red LED will flash every 8 seconds, indicating the smoke alarm is in the alarm silencer (Hush) mode.

**NOTE: WEEKLY TESTING IS REQUIRED.**

### **Alarm silence (hush mode):**

When you push same Test button for at least 5 seconds (or until the unit sounds) to activate silence control, the alarm will enter to HUSH mode for approx 8 minutes. Smoke alarms are designed to minimize nuisance alarms. Combustion particles from cooking may set off the alarm if the alarm is located close to the cooking area. Large quantities of combustible particles are generated from spills or when grilling/frying. Using the fan on a range hood that vents to outside (non-recirculation type) will also help remove these combustible particles from the kitchen. The alarm silence (test button) is extremely useful in a kitchen area or other areas prone to nuisance alarms.

The alarm silence (hush mode) has the capability of temporarily forbid the alarm circuit to detect smoke for about 8 minutes. This feature is to be used only when a known alarm condition, such as smoke from cooking, activates the alarm.

The smoke alarm will automatically reset after approximately 8 minutes, if after this period, particles of combustion are still present, the alarm will sound again.

The alarm silencer (hush mode) can be repeatedly until the air has been cleared of the condition causing the alarm.

**CAUTION:** Before using the alarm silence (hush), identify the source of the smoke and be certain a safe condition exists.

**DANGER:** If the alarm sounds, and it is not being tested, it means the unit is sensing smoke, **THE SOUND OF THE ALARM REQUIRES YOUR IMMEDIATE ATTENTION AND ACTION.**

### **Repair:**

Caution: Do not attempt to repair the alarm. It will affect your warranty.

If the alarm is not operating properly, and is still under warranty, return it to the original place you buy. Pack it in a well-padded carton, and ship to the original place you buy.

If the alarm is no longer under warranty, replace it immediately with a comparable alarm.

### **Trouble shooting:**

Problem	Cause and Remedy
The green LED does not light when AC power supply.	<ol style="list-style-type: none"> <li>1. Check the AC QUICK CONNECTOR is properly connect to the smoke alarm.</li> <li>2. If the problem still exists, please return to your retailer.</li> <li>3. If the unit is out of warranty, please replace another new alarm.</li> </ol>
Smoke alarm does not sound when tested. NOTE: Push test button for at least five seconds while testing!	<ol style="list-style-type: none"> <li>1. Ensure that the battery and the AC QUICK CONNECTOR is properly connected.</li> <li>2. Clean smoke alarm.</li> <li>3. If there are still failures during warranty, you can return to your retailer.</li> <li>4. If the unit is out of warranty , please replace another new alarm</li> </ol>
The alarm chirp occurs every about approx 32 seconds, at the same time as the red LED flash once	The battery is in low battery status, please replace battery, and refer to “replace battery” section.
Smoke alarm chirp occurs every approx 32 seconds ( alarm goes into fault mode ).	<ol style="list-style-type: none"> <li>1. Clean smoke alarm. Please refer to the “maintenance and cleaning” section.</li> <li>2. Purchase and change another smoke alarm if the problem still exist</li> </ol>
Smoke alarm sounds unwanted alarms intermittently or when residents are cooking, taking showers, etc.	<ol style="list-style-type: none"> <li>1. Press test button to pause alarm.</li> <li>2. Clean smoke alarm device. Please refer to the “maintenance and cleaning” section.</li> <li>3. Move smoke alarm device to new location and press test button..</li> </ol>
The alarm sounds different from it is used to. It starts and stops.	<ol style="list-style-type: none"> <li>1. Clean smoke alarm device. Please refer to the “maintenance and cleaning” section.</li> <li>2. If there are still failures during warranty, you can return to your retailer.</li> <li>3. if the unit is out of warranty , please replace another new alarm.</li> </ol>

**WARNING:** Do not disconnect battery to quiet an unwanted alarm. This will remove your protection. Fan the air or open a

window to remove smoke or dust.

### **Maintenance and Cleaning:**

In addition to weekly testing, cleaning to remove dust, dirt, and debris at least once a month. Always turn off the power before cleaning.

Use a vacuum cleaner with the soft brush, vacuum all sides and covers of smoke alarm. Be sure all the vents are free of debris. Use a damp cloth to clean the alarm’s cover.

This smoke alarm uses a 9 volt battery. A fresh battery should last for at least one year under normal operate conditions.

This alarm has a low battery monitor which will cause the alarm to “chirp” and at the same time as the red LED flash approx every 32 seconds for a minimum of thirty days when the battery gets low. Replace the battery when this condition occurs. Please refer to “**REPLACE BATTERY**”.

**IMPORTANT:** Do not attempt to remove the cover to clean inside. This will affect warranty.

### **Develop and Practice a Plan of Escape:**

- Install and maintain fire extinguishers on every level of the home and in the basement and garage. Know how to use a fire extinguisher prior to an emergency.
- Make a floor plan indicating all doors and windows and at least two escape routes from each room. Second story windows may need a rope or chain ladder.
- Have a family meeting and discuss your escape plan, showing everyone what to do in case of fire.
- Determine a place outside your home where you all can meet if a fire occurs.
- Familiarize everyone with the sound of the smoke alarm and train them to leave your home when they hear it.
- Teach all household members to touch the door and use an alternate exit when the door is hot, instruct them not to open the door if the door is hot.
- Teach household members to crawl along the floor to stay below dangerous smoke, fumes and gases.
- Practice a fire drill at least every six months, including fire drills at night. Ensure that small children hear the alarm and wake when it sounds. They must wake up in order to execute the escape plan. Practice allows all occupants to test your plan before an emergency. You may not be able to reach your children. It is important they know what to do.
- Current studies have shown smoke alarms may not awaken all sleeping individuals, and that it is the responsibility of individuals in the household that are capable of assisting others to provide assistance to those who may not be awakened by the alarm sound, or to those who may be

incapable of safely evacuating the area unassisted.

## **What to do when the alarm sounds:**

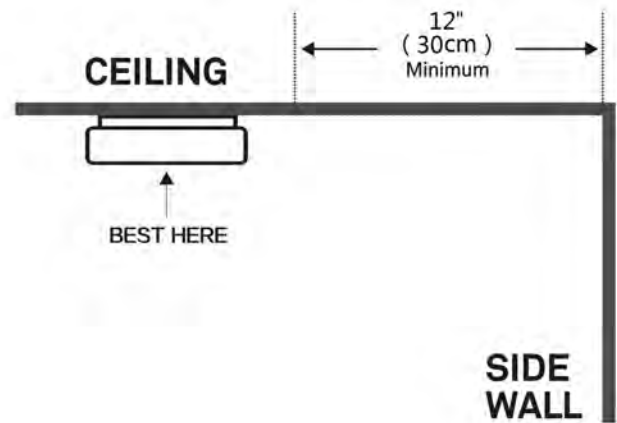
1. Alert small children in the home to quickly follow the family escape plan.
2. Leave immediately by your escape plan. Every second counts, so don't waste time getting dressed or picking up valuables.
3. In leaving, don't open any inside door without first feeling its surface. If hot, or if you see smoke seeping through cracks, don't open that door! Instead, use your alternate exit. If the inside of the door is cool, place your shoulder against it, open it slightly and be ready to slam it shut if heat and smoke rush in.
4. Stay close to the floor if the air is smoky. Breathe shallowly through a cloth, wet if possible.
5. Once outside, go to your selected meeting place and make sure everyone is there.
6. Call the fire department from your neighbor's home -not from yours!
7. Don't return to your home until the fire officials say that it is all right to do so.

**Note:** These guidelines will assist you in the event of a fire, however, to reduce the chance that fires will start, practice fire safety rules and prevent hazardous situations.

## **Recommended Locations for Alarms:**

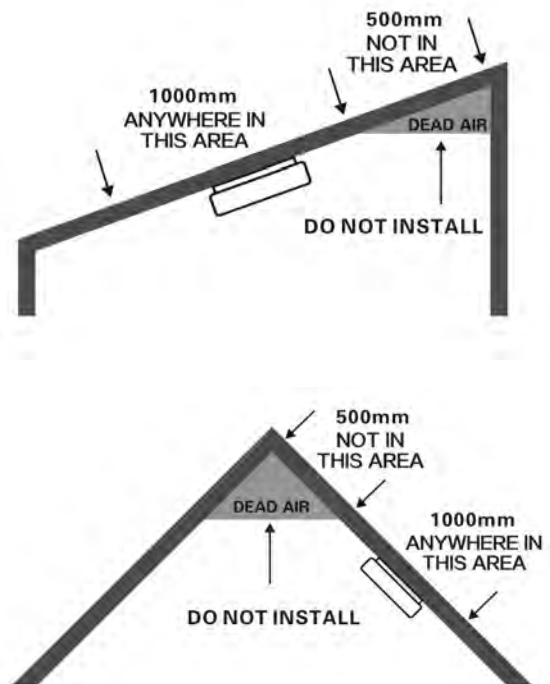
- Locate the first alarm in the immediate area of the bedrooms. Try to monitor the exit path as the bedrooms are usually farthest from the exit. If more than one sleeping area exists, locate additional alarms in each sleeping area.
- Locate additional alarms to monitor any stairway as stairways act like chimneys for smoke and heat.
- Locate at least one alarm on every floor level.
- Locate an alarm in every bedroom.
- Locate an alarm in every room where electrical appliances are operated (i.e. portable heaters or humidifiers).
- Locate an alarm in every room where someone sleeps with the door closed. The closed door may prevent an alarm not located in that room from waking the sleeper.
- Smoke, heat, and combustion products rise to the ceiling and spread horizontally. Mounting the smoke alarm on the ceiling in the center of the room places it closest to all points in the room. Ceiling mounting is preferred in ordinary residential construction.
- When mounting an alarm on the ceiling, locate it at a minimum of 12" (30cm) from the side wall (Refer to

Diagram 5).



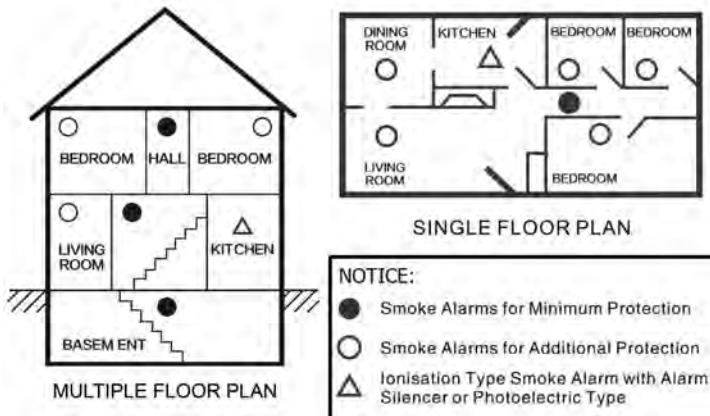
**Diagram 5**

- Put smoke alarm at both ends of a bedroom hallway or large room if the hallway or room is more than 9.1 m (30 ft) long.
- Smoke alarms in rooms with ceiling slopes greater than 1m in 8 m horizontally shall be located on the high side of the room. Install a smoke alarms on sloped, peaked or cathedral ceilings between 500mm and 1500mm from the highest point of the ceiling. (See Diagram 6).



**Diagram 6**

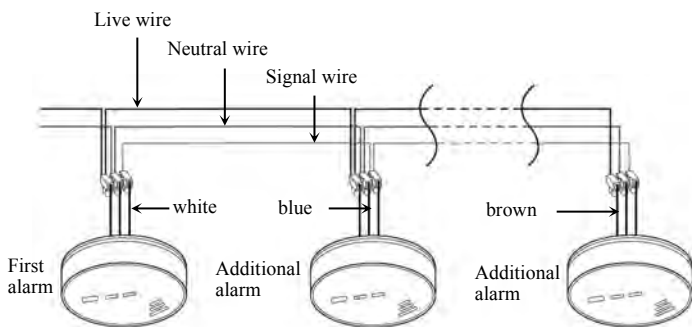
- For single floor plan and multiple floor plan, please refer to diagram 7.



**Diagram 7**

**Wiring Instructions:**

- The appropriate power source is 220~240 volt AC single phase supplied. When install or remove the smoke alarm, you must turn off the AC power to ensure safety.
- Connecting wires are recommended to use a cross sectional area from 0.8 mm<sup>2</sup> to 1.5 mm<sup>2</sup>, or according to local wiring standard.
- The smoke alarm device shall be provided with an ALL-POLE MAINS SWITCH from a circuit within the household consumer unit. The ALL-POLE MAINS SWITCH shall have a contact separation of at least 3 mm in each pole.
- Should use the terminal to connect the AC QUICK CONNECTOR and AC main power supply. The terminal should allow the connection of conductors having nominal cross-sectional areas of between 0.4mm<sup>2</sup> and 1.5 mm<sup>2</sup>. (refer to Diagram 9)
- When alarms are interconnected, all interconnected units must be powered from a single circuit.
- A maximum of 12 Siterwell devices recommended may be interconnected in a multiple station arrangement, over 12 devices maybe result in overload.
- Diagram 8 illustrates interconnection wiring, inapposite connection may result in damage to the alarm, failure to operate, or a shock hazard.



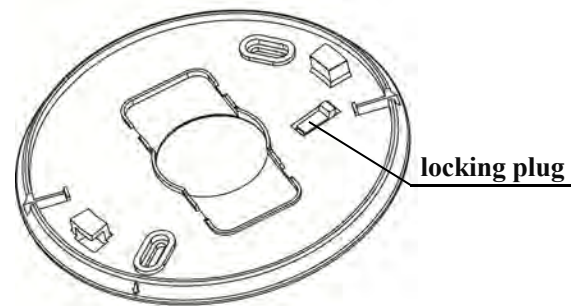
**Diagram 8**

**Wire on alarm harness connected to:**

- Brown wire --- Live wire of AC line
- Blue wire --- Neutral wire of AC line
- White wire --- I/O signal as interconnect line of other Units in the multiple station set up.

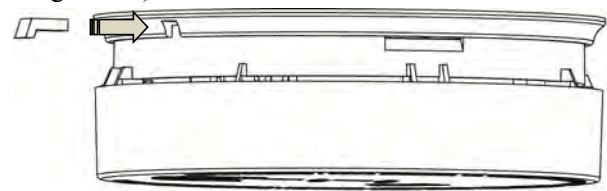
**Mounting Instructions:**

- After selecting the proper location for your smoke alarm, wiring the AC QUICK CONNECTOR harness as described in the Wiring instructions (AC power should be turned off at this stage).
- Turn the alarm body counterclockwise and take off the bracket.
- Remove locking plug from the bracket with screwdriver (refer to Diagram 9).



**Diagram 9**

- Hold the bracket on the installation position, mark installation hole of the bracket with pencil.
- Bore two installation holes on the sign with electric drill. Make diameter of holes is 5mm, Strike the two plastic plugs into holes with hammer.
- Pull the AC QUICK CONNECTOR through the center hole in the bracket. Attach the bracket to the plastic plugs and fix tightly the screws into the plastic plugs. (Refer to Diagram 10 - installation sketch map).
- Fix the battery into battery box.
- Connect the AC QUICK CONNECTOR to the alarm body.
- Fit the alarm on the bracket and turn the alarm body clockwise, until matching well on the bracket.
- Insert locking plug into the gap between bracket and bottom cover for locking alarm in place (Refer to Diagram 11).



**Diagram 11**

- Turn on the AC power. The green LED should be lit when the alarm is operating from AC power.
- Test smoke alarm using test button. The alarm will sound 3 short beeps – 1.5 seconds pause. Then repeat it until release the button.
- To prevent injury, this unit must be securely attached to ceiling in accordance with the installation instructions.

**Service and Warranty:**

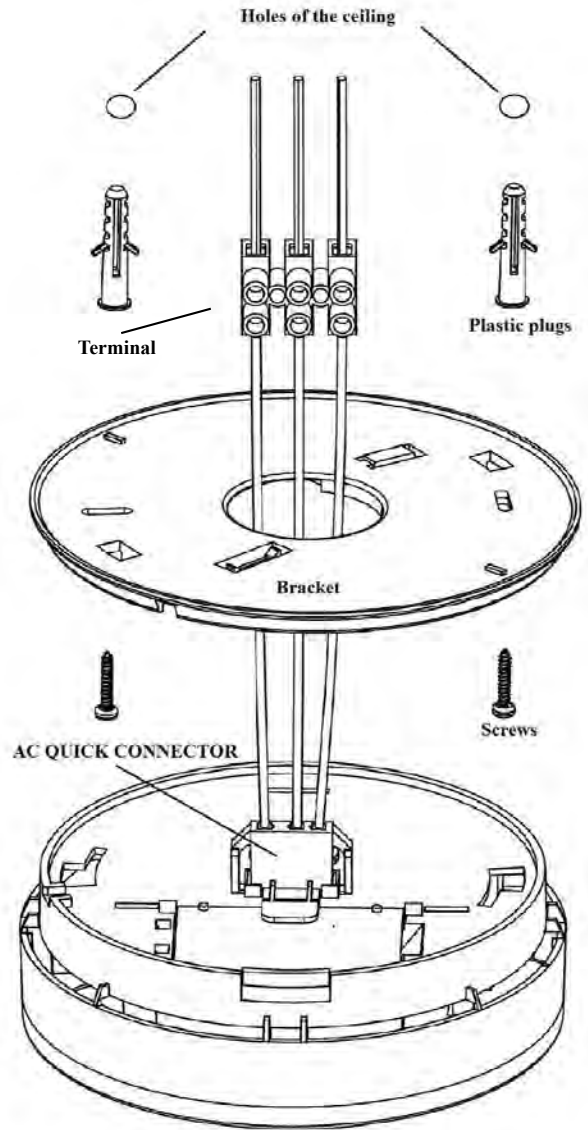
Company warrants to the original consumer. Purchase each new smoke alarm to be free from defects in material and workmanship under normal use and service for a period of 10 years (exclude battery) from the date of purchase. This warranty does not cover damage resulting from accident, misuse or abuse or lack of reasonable care of the product. In no case shall company be liable for any incidental or consequential damages for breach of this or any other warranty express or implied, whatsoever. The bad product can be mailed to the following address with a detail explanation of problem. If after reviewing this manual you feel that your smoke alarm is defective in any way, do not tamper with the unit. Return it for servicing to:



**FirePro**

138–140 Bayfield Rd East,  
 Bayswater North, VIC, 3153. Australia.  
 P (03) 9720 4333 F (03) 9720 4344  
 MODEL NUMBER: FP240V

**Installation sketch map:**



**Diagram 10**