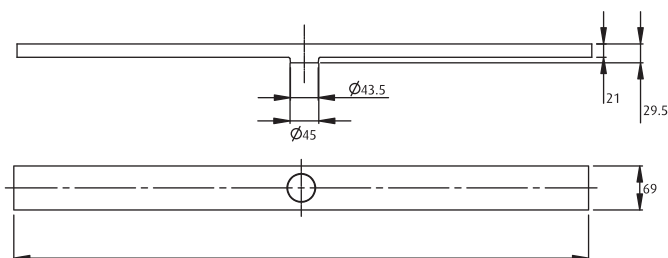


# floor waste series

- 316 marine grade stainless steel
- Easy to clean
- Australian Water Mark approved Certificate 23027
- Centre waste outlet only
- Superior fall to waste
- Available in 4 sizes: 800, 900, 1000 & 1200mm
- Comfortable under foot
- No plastic or rough edges
- Perfect for large format tiles
- Cost effective
- 45mm outlet to fit most waste pipes
- Thin profile allows minimal screed height



# floor waste series

## Square wastes

SOLID –  
BRUSHED  
INSERT  
FD11XS90-I



ROUND  
FD11XS90-R



SQUARE  
FD11XS90-S



RECTANGLE  
FD11XS90-E



LINEAR  
FD11XS90-L



TILE INSERT  
FD11XS90-T



ABOVE SQUARE WASTE SIZES:  
110MM (L) X 110MM (W)  
X 36MM (D) – Ø90MM



9 343363 000098

## Channel wastes

SOLID – BRUSHED INSERT **SPECIAL ORDER**  
FD80S / FD90S / FD100S / FD120S



ROUND  
FD806.5S-R / FD906.5S-R / FD1006.5S-R / FD1206.5S-R



SQUARE  
FD806.5S-S / FD906.5S-S / FD1006.5S-S / FD1206.5S-S



RECTANGLE  
FD806.5S-E / FD906.5S-E / FD1006.5S-E / FD1206.5S-E



LINEAR **SPECIAL ORDER**  
FD80L / FD90L / FD100L / FD120L



TILE INSERT **SPECIAL ORDER**  
FDT80 / FDT90 / FDT100 / FDT120

ABOVE CHANNEL WASTE SIZES:  
800 / 900 / 1000 / 1200MM (L) X 70MM (W) X 21MM  
(D) – Ø45MM

Available at  
**BUNNINGS**  
warehouse

**FORME**  
BATHROOM COLLECTION

EMAIL [info@formeathroomcollection.com.au](mailto:info@formeathroomcollection.com.au)