

VELUX®

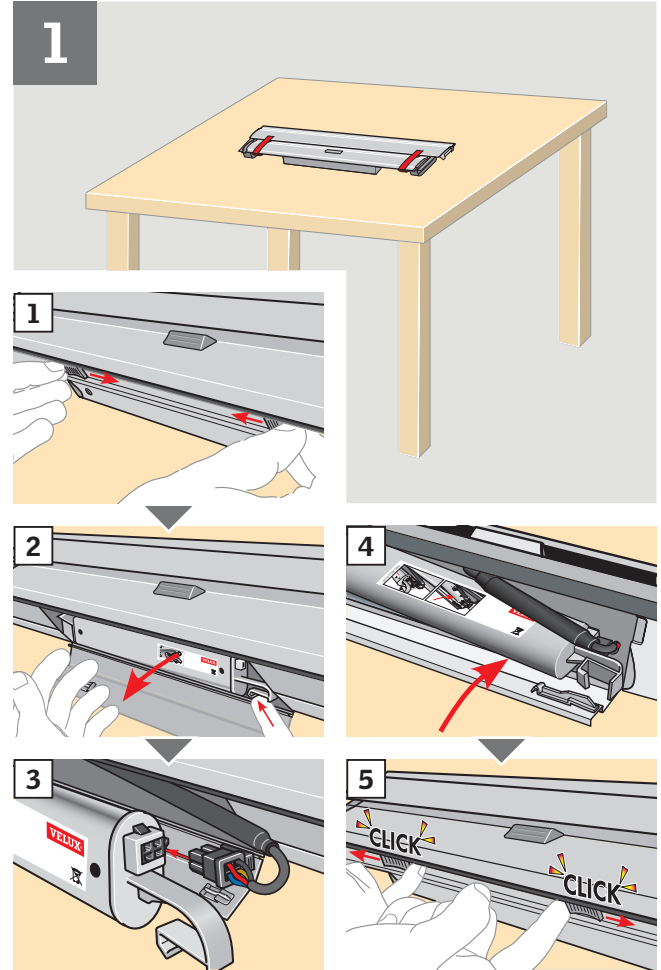
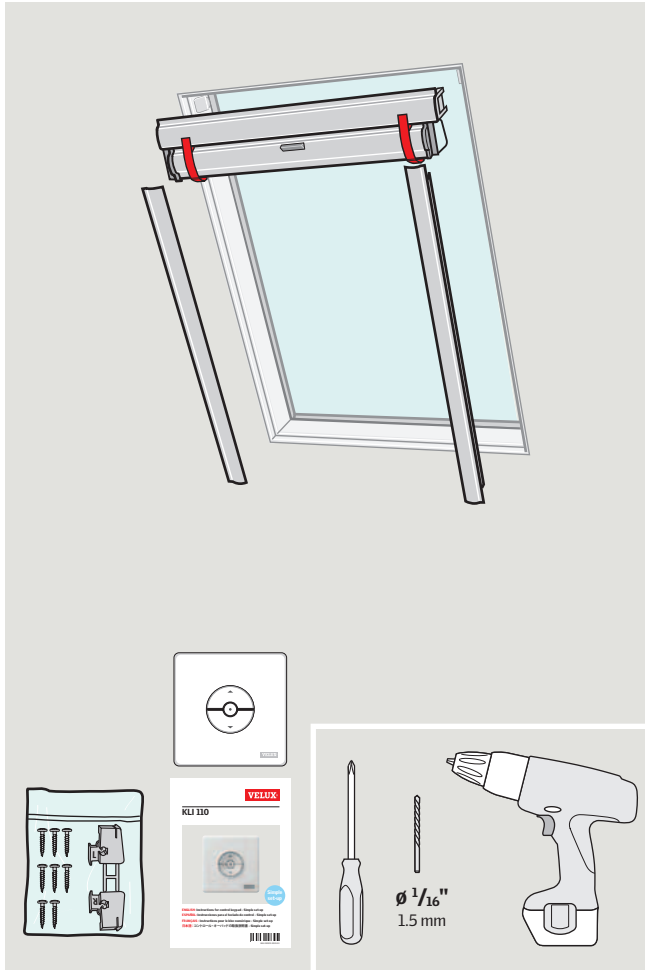
DSC/DSD/DSH/ RSC/RSD/RSH/RSJ



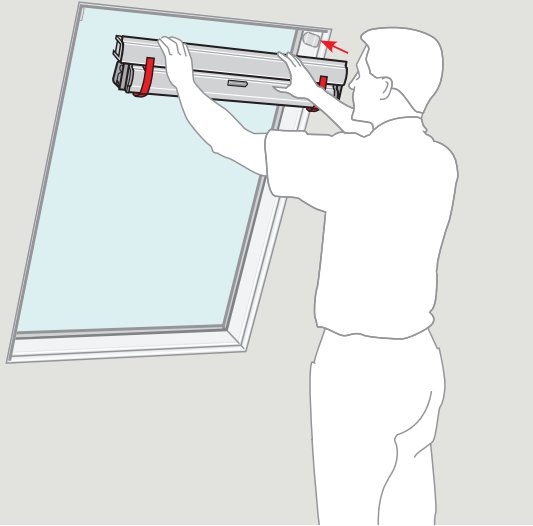
C_{UL} US LISTED
Accessory Electric Blinds



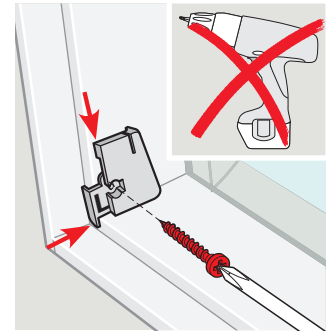
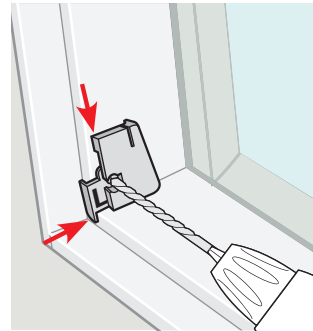
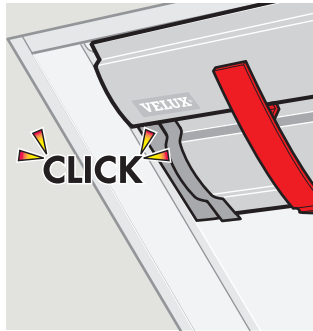
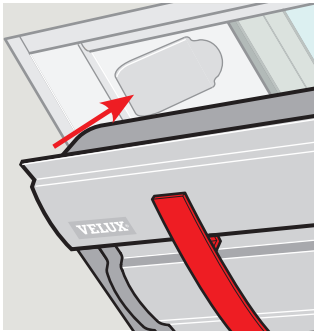
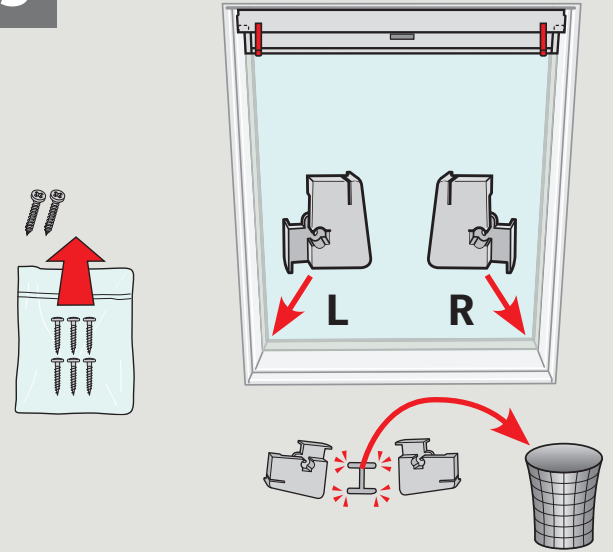
VAS 452177-2012-04

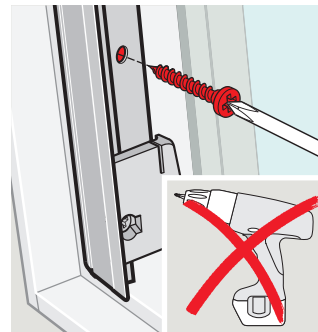
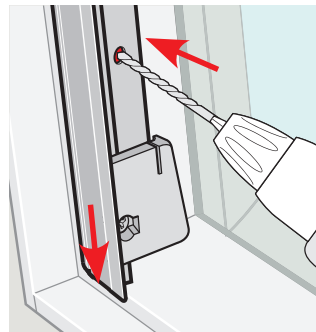
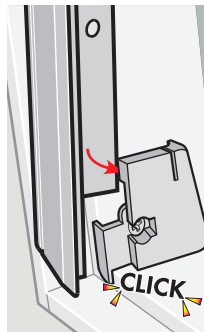
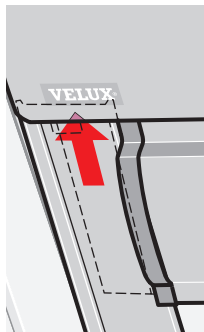
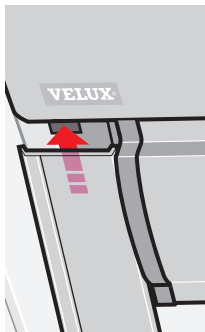
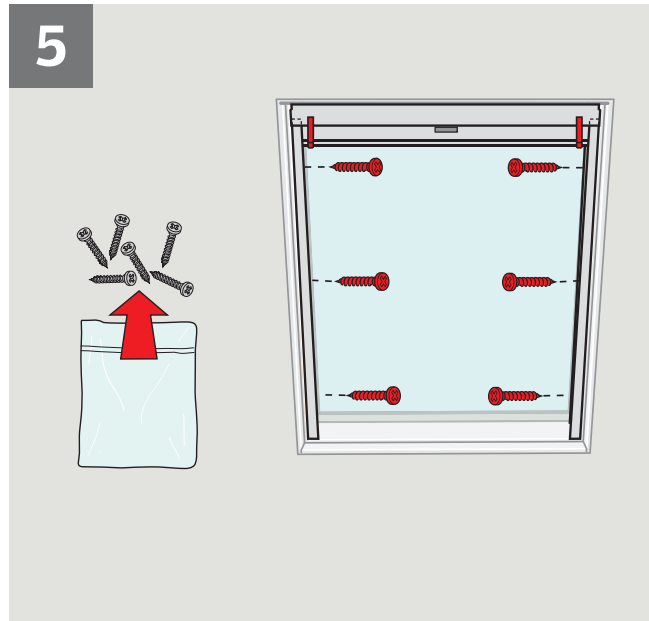
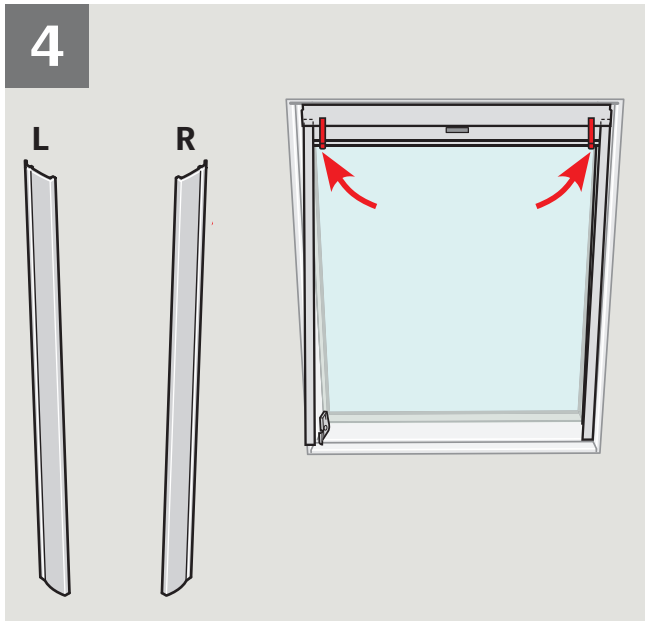


2

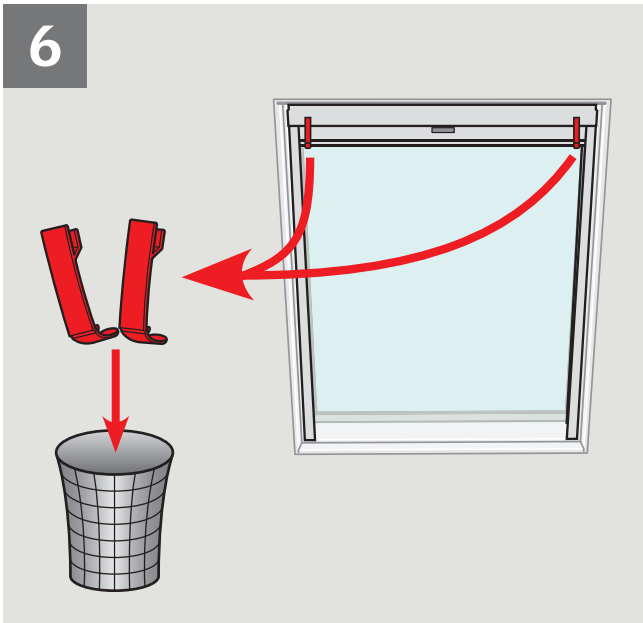


3

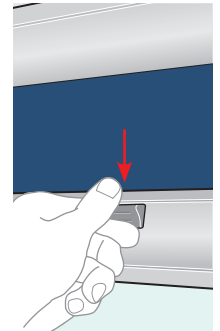
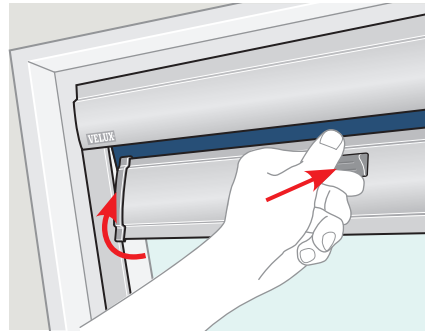
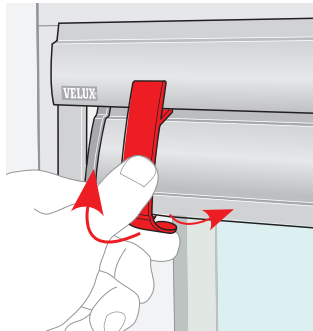
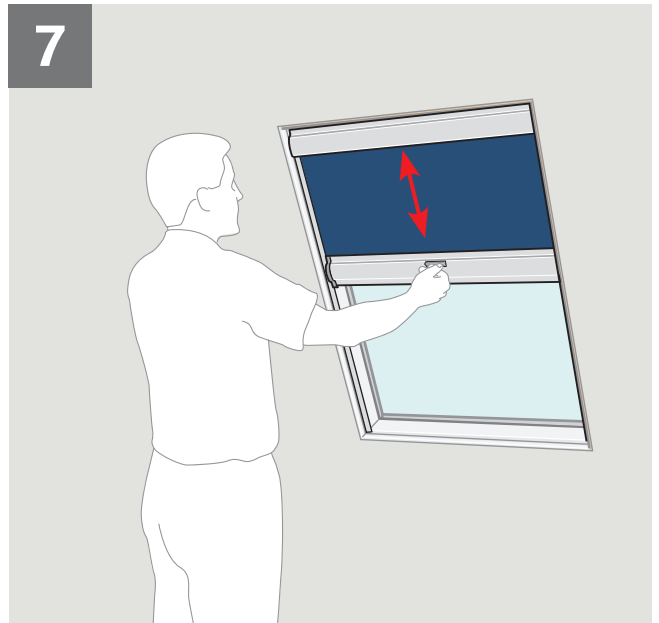




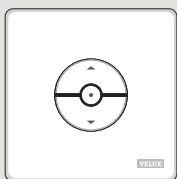
6



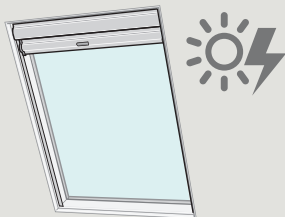
7



8



KLI 110

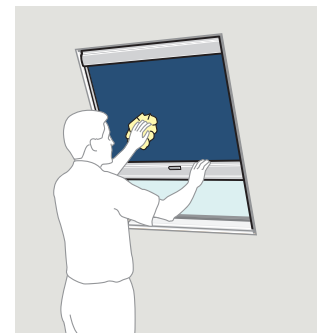
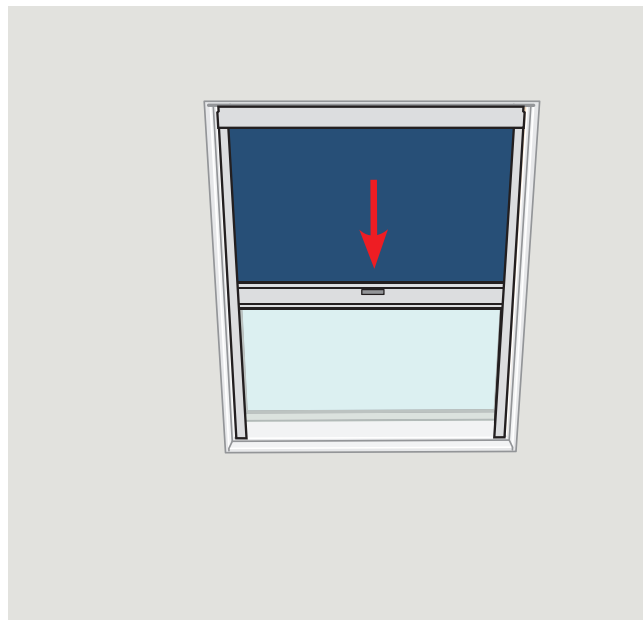


ENGLISH: To complete installation, follow instructions for control keypad KLI 110.

ESPAÑOL: Para completar la instalación, siga las instrucciones para el teclado de control KLI 110.

FRANÇAIS : Afin de finir l'installation, référer aux instructions pour le bloc numérique KLI 110.

日本語: ブラインドを動作させるには、リモコンの初期設定が必要です。別冊KLI110取扱説明書「初期設定」、に従って設定をして下さい。





VELUX®

- US:** VELUX America Inc.
1-800-88-VELUX
- CD:** VELUX Canada Inc.
1 800 88-VELUX (888-3589)
- AU:** VELUX Australia Pty. Ltd
1300 859 856
- NZ:** VELUX New Zealand Ltd.
0800 650 445
- JP:** VELUX-Japan Ltd.
0570-00-8145

www.velux.com