

# SurePave<sup>®</sup> Permeable Paving

Stabilise your Grass, Gravel  
& Decorative Stone.



**CIRTEX**  
GAIN MORE *GROUND*



## **Enhance your outdoor living spaces with Permeable Paving.**

A unique, environmentally friendly alternative to traditional concrete or asphalt pavements.

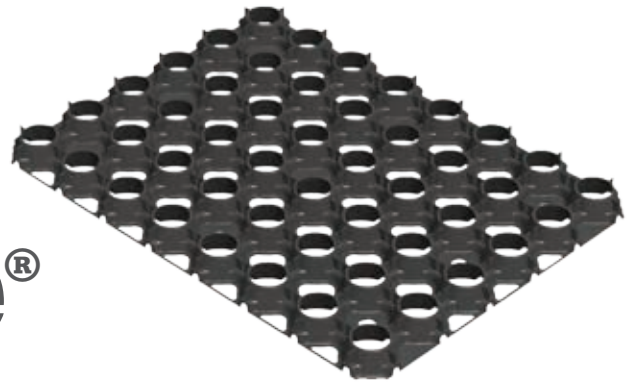
Cirtex has the permeable paving solution for any project. Our range includes paving panels to stabilise grass, gravel and decorative stone.

Create a contemporary look and feel to enhance entrance ways, courtyards, paths and driveways which are functional, cost effective and low maintenance.

Compliment your existing landscaping with permeable paving.

**Stylish, sophisticated, stunning!**

# SurePave®



## The Heavyweight in Permeable Paving

SurePave® permeable paving panels are the ideal solution for reinforcing grass, gravel and decorative stone in highly stressed areas, vehicle parking, driveways, golf courses, parks or hard stand areas for boats, trailers or caravans.

The robust cellular design of SurePave® offers a perfect paving alternative to concrete while still maintaining all the benefits of a hard pavement.

Porous and free draining, SurePave® allows water to be absorbed easily creating a safe and functional surface that is natural and attractive.

Significant features of SurePave® paving panels include a unique positive interlocking system to ensure panels are held in place, a small panel size for ease in transportation/installation, and the ability to withstand loads of over 700 tonnes per square metre when filled.

If you are wanting a paving solution that encompasses style and functionality, that can withstand heavy duty usage for years to come, look no further than the SurePave® Paving System.

### SUREPAVE® PANELS

**Code** 76148  
**Product** SurePave Black 0.5m<sup>2</sup> Panel  
**Size** 816mm x 612mm

### SUREPAVE® SPECIFICATIONS

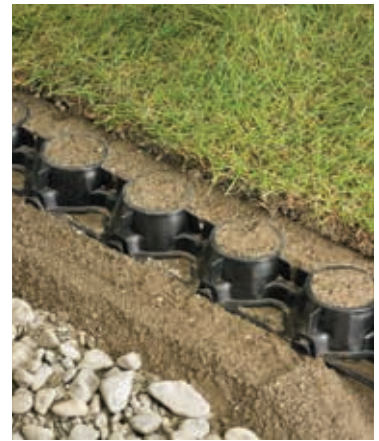
STRUCTURE	Interlocking Open Structure Hollow Pavers
LOCKING SYSTEM	Positive Lock Clipping System
PANEL DIMENSIONS	816mm x 612mm x 40mm
MATERIAL	Polypropylene Recycled
UNIT WEIGHT	2kg
CRUSH STRENGTH UNFILLED	>133 tonnes/m <sup>2</sup>
CRUSH STRENGTH FILLED WITH STONE	>740 tonnes/m <sup>2</sup>
TEST METHODS	Compression, NZS 3116 : 1991, App A & B



# SurePave<sup>®</sup> for Grass

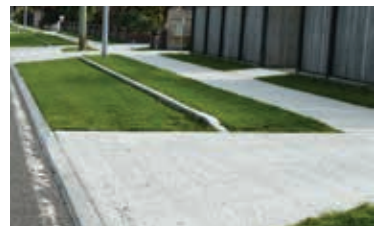
SurePave<sup>®</sup> Permeable Paving panels are designed to stabilise and support grass. Create a free draining, strong surface that is environmentally friendly and functional.

Interlocking panels are positioned beneath the grass surface, evenly distributing the load to the base below. This minimises compaction and eliminates pot holes, ponding or damage to the ground below.



## Features & Benefits

- **Quick and easy to install**
- **Free draining permeable surface**
- **Protects tree roots**
- **Solid, stable surface**
- **Naturally appealing**
- **Cost effective**
- **Easily uplifted to access amenities**
- **Environmentally friendly**
- **Rated for residential, commercial and industrial use**



For more information on our products contact us 0800 CIRTEX (247 839) | [INFO@CIRTEX.CO.NZ](mailto:INFO@CIRTEX.CO.NZ)



✓ **Quick**



✓ **Easy**



✓ **Smart**



## SurePave<sup>®</sup> Installation for grassed surfaces



**1** Measure the area to be covered and calculate how many panels are required. (2 panels per m<sup>2</sup>).



**2** Skim off existing vegetation.



**3** Establish a consistent level or gradient.



**4** Use good screened topsoil or sand and spread a thin layer over prepared base to create an even bed.



**5** Lay panels ensuring they are interlocked correctly. Trim to shape with a circular saw, or similar, where required.



**6** Fill with good screened topsoil up to 10mm above the top of the panels and sow grass or lay turf.

**\*Note: A base course may be required depending on the existing soil conditions and/or projected traffic volumes. If in doubt either email [info@cirtex.co.nz](mailto:info@cirtex.co.nz) or visit [www.cirtex.co.nz](http://www.cirtex.co.nz) to view the installation video.**



# SurePave<sup>®</sup> for Gravel

Permeable Paving offers an attractive alternative to concrete and asphalt pavements. SurePave<sup>®</sup> surfaces are free draining, structurally strong, aesthetically appealing and cost effective.

SurePave<sup>®</sup> interlocking paving panels are designed to stabilise decorative stones and gravel, giving these areas the feel of a hard pavement while still maintaining an attractive natural look.

SurePave<sup>®</sup> paving panels are inherently strong and have the ability to withstand heavy traffic in areas with constant pedestrian or vehicle use.

Interlocking panels are positioned beneath the aggregate surface, evenly distributing the load to the base below. This minimises compaction and eliminates pot holes, ponding or damage to the ground below.

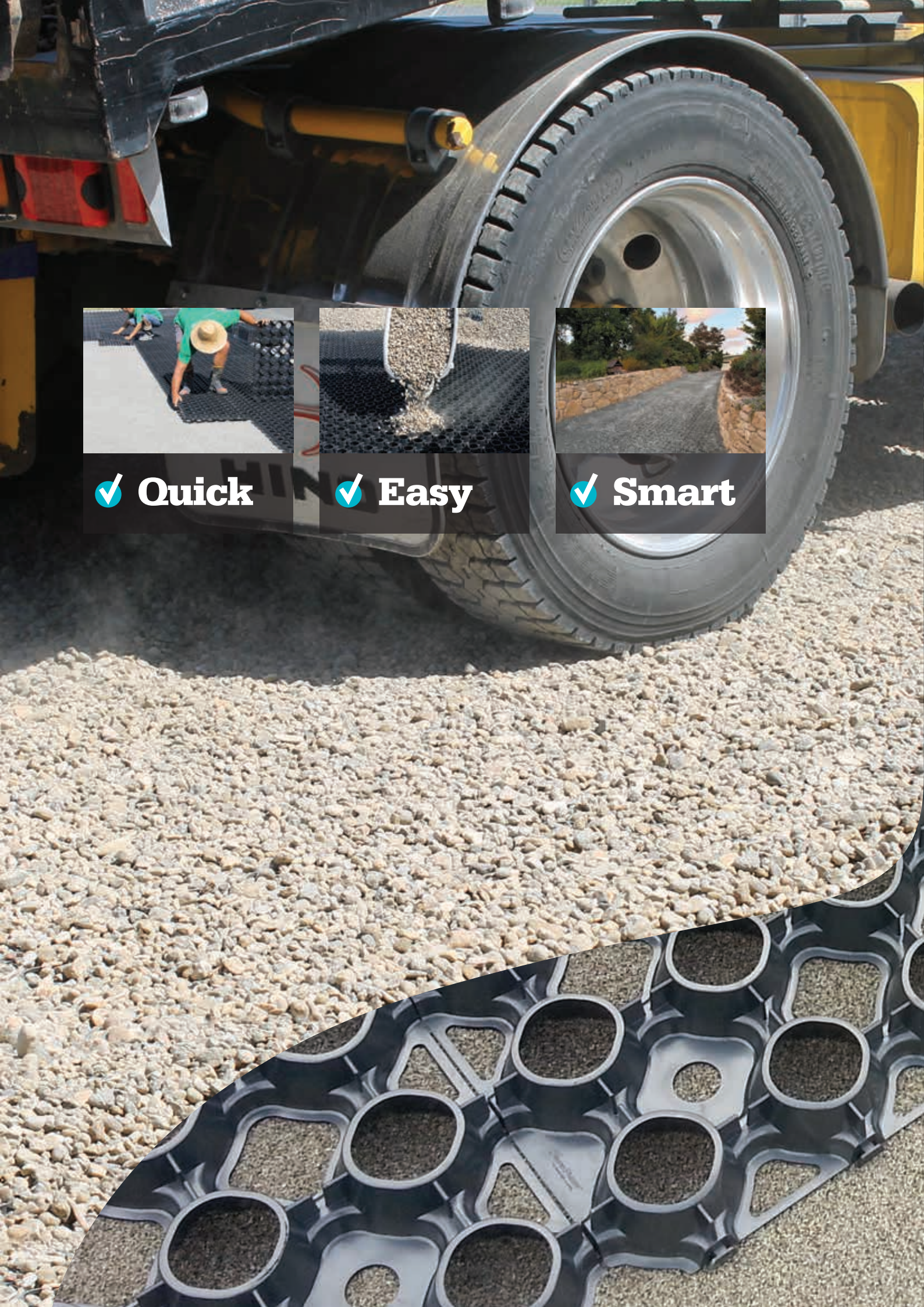
## Features & Benefits

- **Quick and easy to install**
- **Free draining permeable surface**
- **Pedestrian, car and truck use**
- **Creates a solid, stable surface**
- **Enhances the natural beauty of grass, gravel and decorative stone**



For more information on our products contact us 0800 CIRTEX (247 839) | [INFO@CIRTEX.CO.NZ](mailto:INFO@CIRTEX.CO.NZ)





✓ Quick

✓ Easy

✓ Smart



## SurePave® Installation for gravelled surfaces



**1** Excavate ground shape and levels to achieve sufficient grading and load bearing base.



**2** Depending on the soil type and loading, a geotextile is recommended to be laid on the sub-grade surface.



**3** Compact a suitable base course material to sufficient depth, ensuring that the area is shaped to prevent ponding.



**4** A geotextile can be laid on top of the base course as a separation layer between this and the sandy topsoil bedding layer to prevent migration of the particles.

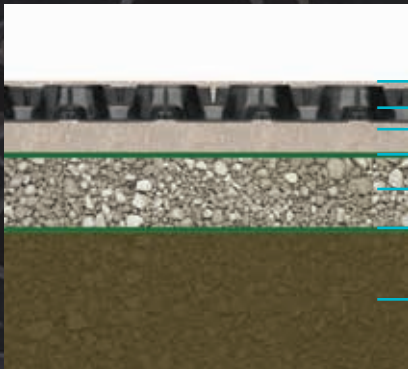


**5** Install edging restraints. AluExcel Paver restraint system is recommended.



**6** Place a 25mm bedding layer of clean, sharp sand over the base course layer and screed to level.

[WWW.CIRTEX.CO.NZ](http://WWW.CIRTEX.CO.NZ)



Fill Permeable Paving  
Permeable Paving  
Sand/Leveling Course  
Geotextile - optional  
Base Course  
Geotextile/GeoGrid - optional  
Natural Ground

For more information email [info@cirtex.co.nz](mailto:info@cirtex.co.nz) or visit [www.cirtex.co.nz](http://www.cirtex.co.nz) to view the installation video.



**7** Lay panels ensuring they are interlocked correctly. Trim to shape with a circular saw, or similar, where required. On steep slopes or heavy turning areas use steel anchors.



**8** Fill the panels with specified angular roading aggregate or decorative gravel to finished levels (7mm - 19mm aggregate size is recommended).



**9** Use a plate compactor to consolidate the filling material into the panels. Fill any voids that show with more aggregate. Filling material should just cover paver's.

Subject to Cirtex Industries Limited standard terms and conditions, available on request.  
Specifications are subject to change without notice. © Copyright 2014 all rights reserved.

**CIRTEX INDUSTRIES LTD**

**HEAD OFFICE**

16 QUEEN STREET, KOPU, THAMES 3578, NEW ZEALAND

**AUCKLAND SALES & DISTRIBUTION**

2 WILCO PLACE, WIRI, MANUKAU, AUCKLAND

**CHRISTCHURCH SALES & DISTRIBUTION**

UNIT 2, 652 HALSWELL JUNCTION ROAD, HORNBY, CHRISTCHURCH

**POSTAL ADDRESS** PO BOX 470, THAMES 3540, NEW ZEALAND

**0800 CIRTEX (247 839) | [WWW.CIRTEX.CO.NZ](http://WWW.CIRTEX.CO.NZ)**



**CIRTEX**  
*GAIN MORE GROUND*