

EARTHWOOL®

the feel good glasswool insulation

NEW UNDERFLOOR INSULATION WITH "WIND WASH BARRIER"

HIGH THERMAL
PERFORMANCE
R-1.7



DRAUGHTS OUT COMFORT IN

● A laminated wind wash barrier for improved thermal performance:

- protection from the negative effects of air movement under your floor
- provides a barrier to cold and windy conditions
- thermal performance isn't compromised by air movement

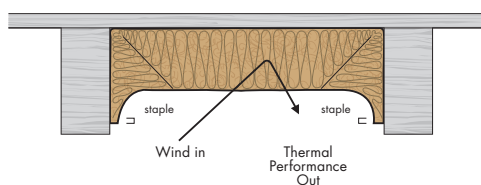
● Can be stapled in place

● Super-soft insulation

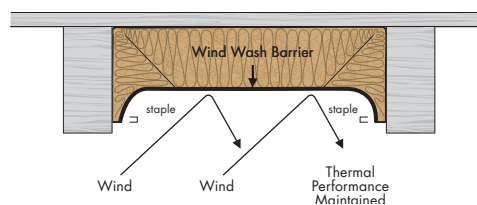
● Improved thermal performance – cooler home in summer and warmer home in winter

● Lower energy bills

**NO WIND WASH BARRIER –
poor thermal performance**



**WIND WASH BARRIER –
good thermal performance**



KNAUFINSULATION
it's time to save energy

Available at
BUNNINGS
warehouse



Insulating under floors is now easier as Earthwool® underfloor insulation can be directly fixed in place. Once installed, the insulation will improve the thermal comfort of your home and can contribute to lower energy bills.

INSTALL INSTRUCTIONS

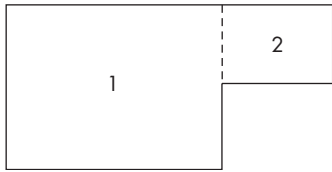
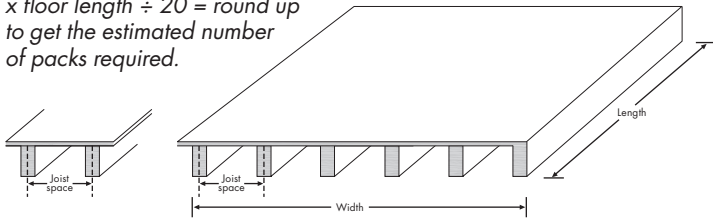
Installing new Earthwool underfloor roll can be done in 'four' simple steps. See our guide below to see what you need to get the job done and for more detailed install instructions please refer to the product packaging and our website before installing the insulation.

1. Measure up

To determine how many packs of insulation you need, complete the following calculation or use our quick guide below.

Calculation

Floor width ÷ joist spacing
x floor length ÷ 20 = round up
to get the estimated number
of packs required.



For irregular shapes break the floor into sections, complete the calculation for each section and add the sections together.

2. Quick guide - calculate the number of rolls required

Please refer to the table below to see how many rolls you need

Quick guide

Average number of rolls needed					
Earthwool Underfloor 75mm Finline 0811073	Joist spacing	75m ²	100m ²	125m ²	150m ²
	450mm	9	12	14	17
	500mm	7	9	11	13

The number of rolls are provided as an approximate calculation and should be used as guidance only



3. Tools required to install Underfloor roll

You will require the following:

Tools: Tape measure, staple gun, sharp knife



Safety equipment: Goggles, respirator mask, gloves, long sleeve top, full length trousers, flat shoes, cap

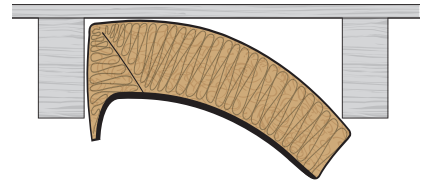


4. Installation steps

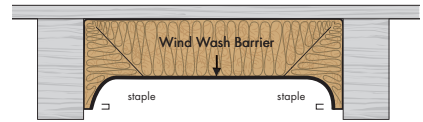
a. Cut rolls to size



b. Friction fit between joists, with turndowns on each side



c. Staple into place



DO NOT START WORK UNTIL THE SITE IS SAFE!

Prior to installation complete an evaluation of the underfloor considering access, joist spacings and any obstructions that may present a safety issue. Installation must be completed to the requirements of relevant standard: AS 3999 or NZS 4246. When insulating the floor, care should be taken to ensure that sub-floor ventilation is maintained according to AS/NZS 1860 or, heed the recommendations of particleboard/timber flooring suppliers.

Try and avoid staples made from metal or other conductive materials if possible. Installing underfloor insulation can be hazardous due to the working environment and electrical cables.

www.knaufinsulation.com.au

