



WATER SLIDE

KEEP THE INSTALLATION INSTRUCTION FOR FURTHER REFERENCE.
PLEASE READ ALL OF THE SAFETY RULES BEFORE SETTING UP.
WE BELIEVE IN SAFETY FIRST. PLEASE FOLLOW ALL OF THE RULES FOR
YOUR CHILDREN'S SAFETY.

WARNING! ELECTRICALLY OPERATED PRODUCT
ADULT SUPERVISION REQUIRED. OPERATING BLOWER (AIR PUMP) NOT
RECOMMENDED FOR CHILDREN UNDER 18 YEARS OF AGE. AS WITH ALL
ELECTRIC PRODUCTS, PRECAUTIONS SHOULD BE OBSERVED DURING
HANDLING AND USE TO PREVENT ELECTRIC SHOCK.



CAUTION:

NOT SUITABLE FOR ADULTS.
ADULTS MUST NOT USE THIS PRODUCT.
NOT SUITABLE FOR HIRING OR COMMERCIAL USE.
ADULT SET-UP REQUIRED.
ADULT SUPERVISION REQUIRED.
WARNING! ONLY FOR DOMESTIC USE. OUTDOOR USE.
TO BE USED ON SOFT GROUND ONLY.



WARNING!
Not suitable for children
under 3 years. Small parts
may be swallowed.

Key information for users

Age range	Maximum players at a time for the whole product	Maximum players at a time for the inflatable part	Maximum individual weight	Maximum total weight for the inflatable part	Minimum individual height	Maximum individual height	For item no.	Item purchased
3-5 years	2	2	34kg	68kg	90cm	120cm	9820	
3-10 years	1	1	40kg	40kg	90cm	150cm	9042S	
	2	2	45kg	90kg	90cm	150cm	9029,9183,9140	
	3	1	45kg	45kg	90cm	150cm	9040	
	3	2	45kg	90kg	90cm	150cm	9129,9240,9117N,9049,9317,9617,9817,9717,9117,9317N,9027	
	3	3	38kg	113kg	90cm	150cm	9049N	
	3	3	45kg	135kg	90cm	150cm	9271,9483,9248	
	4	2	45kg	90kg	90cm	150cm	9417,9421,9417N	
	4	3	45kg	135kg	90cm	150cm	9009,9271N,9116A,9135,9185N	
	4	4	45kg	180kg	90cm	150cm	9047N,9047	
	5	3	45kg	135kg	90cm	150cm	9281,9264,9016,9364,9247	
5	4	45kg	180kg	90cm	150cm	9045		
6	3	45kg	135kg	90cm	150cm	9381,9517,9283,9251		
7	4	45kg	180kg	90cm	150cm	9261		

AFTER SALES SERVICE
HAPPY HOP AUSTRALIA PTY LTD
Email: sales@happyhopkids.com.au
Phone: 1800 607 146

Manufacturer:
Swiftech Company Ltd.

Address: Dongcheng Industrial Zone, Xinping Road, Minzhong Town,
Zhongshan City, Guangdong Province, China.

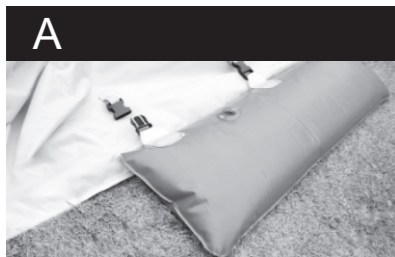
happy hop® is a trademark of **Swiftech Company Ltd.**

©Copyright 2003 by **Swiftech Company Ltd.** All Rights Reserved.

Made in China

SET-UP

- Check the ground where the product will be set up for any sharp objects or debris. Do not install the product over concrete or any hard surface.
- Place the product on a soft level surface at least 2 meters from any structure or obstruction such as a fence, garage, and house, overhanging branches, laundry lines or electrical wires.
- Ensure the play area is free from hazards such as furniture, walls, sharp objects, other hard surfaces, etc.
- Set up the product away from water and any potential fire hazards.
- Keep the blower(air pump) and power cord away from areas of water and moisture. If water contacts the blower(air pump), unplug the blower(air pump) power cord. Do not operate until the blower is completely dry.
- Remove the product from the carry bag. If any, ensure the slide cover coming with the product stretches well from top to end. Be sure to place the product as close to the power source as possible.
- Stretch the inflation tube and attach it to the end of the blower(air pump). Ensure the inflation tube is securely attached and in good condition. The inflation tube should be straight and untwisted. Reposition the blower(air pump) if necessary.
- If the product comes with water bags, like item #9129, please follow the undermentioned instruction, otherwise, overleap this point. Spread out the product, place and fasten the empty water bags at the two sides of the product. Open the water line plug and fill water in the water bags until 80% full (about 22kg), push and close the water line plug. Make sure water bags are firmly attached on the product and no water leakage before the product is fully inflated, and never allow children to play on the slide without installing water bags. (Refer to picture A)
- If the product like item #9129/9417/9517 comes with dry and wet play functions, please follow the below steps:
 - * For dry play, skip the following mentioned point and go to the point under the picture A, B, C, D to continue the set-up.
 - * For wet play, attach the sprayer nozzles to the Velcro at the top beam. Be sure the hose across the top of the unit and down to both sides of the slide with the Velcro.(Refer to picture B, C). Attach the hose to water supply, turn on the water supply when the product is fully inflated. (Refer to picture D)



- Shoes, eyeglasses, jewelry and any hard or sharp objects that may cause injury must be removed before entering the product. Loose or baggy clothing or clothing containing long cords should not be worn while playing on this product. If the product comes with Mega Slide, wearing socks, long sleeves, and long trousers is needed to guarantee SAFETY.
- To prevent choking, children may not enter the product while eating, drinking, or chewing anything in their mouth.
- No flipping, wrestling, running, or pushing is allowed inside the product.
- Do not bounce on the edges, steps. Climbing or hanging on the walls, netting or exterior of the product is not allowed.
- Make sure the water slide is 100% dry before folding and storing in the carry bag, make sure the water jet and water bags put separately with the water slide. Please store your product in dry condition. Keep away from sun and rain. If the water slide has been mould and the fabric weakening due to the inappropriate storage conditions, it will be outside of warranty.
- The carry bag is not a TOY, but for storage use only.
- In case of injury, contact a physician immediately.
- Children can drown in very small amounts of water. Empty the pool when not in use.
- Changes to the original toy shall be carried out according to the instructions of the retailer of the original toy.
- Change the water of paddling pool frequently (particularly in hot weather) or when noticeably contaminated.



Warning! Never leave your child unattended-drowning hazard.

WARNING!

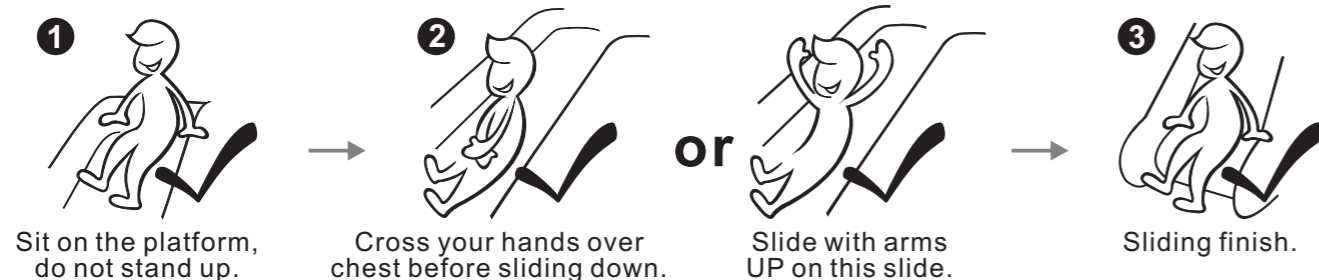
Children have drowned in portable swimming pools. Ensure active adult supervision at all times. Do not leave children unsupervised in or around the pool - keep them within arms' reach. Empty and store safely after use.

WARNING

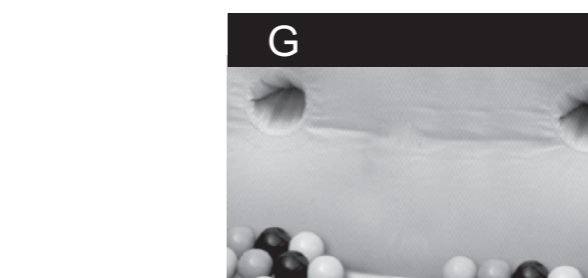
- Failure to follow the specified instructions could result in serious injury.
- Keep the product a safe distance (at least 2 m) from fire, walls and other obstructions.
- The product may not be used outside in rainy and / or lightning conditions or if winds exceed 40km/h (25 MPH). Sudden gusts of wind may lift the product off the ground.
- The product must be fully inflated before any children are allowed inside. The product must stay fully inflated until everyone is out.
- If the product begins to deflate, remove all children and check for disconnection of power cord or for power outage.
- Do not drag on concrete or other rough surfaces.
- Unauthorized modification of the product is not allowed.
- Product should be checked regularly for potentially unsafe conditions such as damaged cord, plug, housing, or parts. If such damage is found, the product should not be used until properly repaired.
- To reduce the risk of fire or electric shock, do not use the blower with any solid-state speed control device.
- Check stakes regularly during playing to ensure they remain secure in the ground.
- Adult set-up and dismantling are required. Adult supervision is required at all times while the product is in use. Instruct children on proper use of this product. Do not use in a manner other than intended.
- Ages and sizes of children playing in the product at the same time should be comparable. Not suitable for children under 3 years. Small parts may be swallowed. Never leave children unattended during playing.
- Keep children and pets away from the blower (air pump).
- Individuals with head, neck, back or other muscular-skeletal injuries or disabilities, small infants, pregnant women and others who may be susceptible to injury from falls, bumps or bouncing are not permitted in the product.
- Never slide down head first to avoid the risk of serious injury or death. Keep arms away from the two sides of the slide when sliding down to avoid a risk of skin injuries.



- Children are required to slide down with proper posture (refer to the following pictures) when playing on the product with slide.



- Push ground stakes through blower base holes. You may need to use a hammer for proper placement.
- Make sure the blower (air pump) power switch is in the OFF position. Ensure the power connections are safely sited and tripping hazard is minimized.
- The blower(air pump) should be securely sited and affixed to the ground before use. Plug the blower (air pump) into an approved ground outlet.
- Ensure the blower(air pump) is free from debris and securely sited to avoid tripping.
- Turn the blower (air pump) power switch to ON. The continual air-flow blower (air pump) must be left ON at all time while the product is being used. (Refer to picture E)
- The product should be fully inflated.
- Ground support stakes are used for lawn ground surfaces. Hook and fit each provided ground stake through each loop in the product. To prevent overturn or lift during playing, push stakes firmly into the soil. Make sure the hooked end of the stake is over the loop at all time during use. The stakes should be placed level with or under the ground in order to reduce tripping hazards. (Refer to picture F)
- Please check the age recommendation and user weights(printed on the product). You must not exceed the total weight for the product.
- Put the included play accessories if any for playing into the product. (Refer to picture G,H)
- If the product comes with support cushions at the sides, do not stand or sit on the cushions.

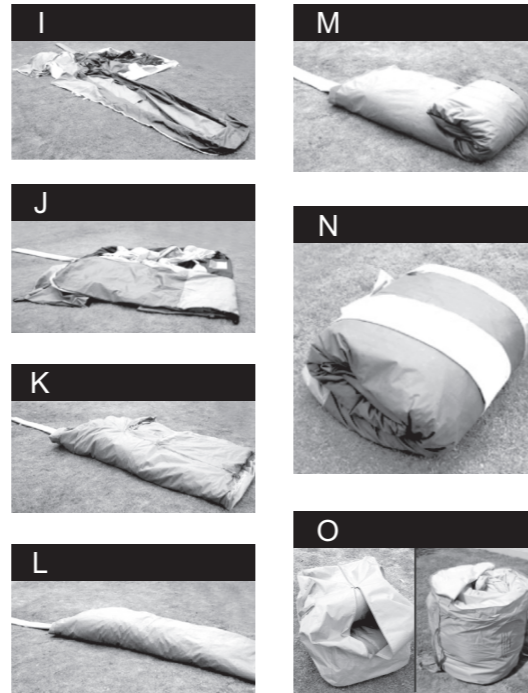


Hint: Air leak from the seams is necessary because the product is inflated by constant air flow and this leakage is required to stop the product becoming over-inflated.

Hint: It is drawn user's attention to the orientation of the inflatable equipment installation in relation to the sun. The sliding surface of the product shall not face to the sun as sunshine can glare the children's eyes when they are sliding down along the slide.

TAKE DOWN

- Make sure all children exit the product.
- Make sure the product is free from foreign objects.
- Make sure the product is 100% dry before folding and storing in the carry bag.
- If the product comes with water bags, like item #9129, please follow the undermentioned instruction, otherwise, overleap this point. Detach the water bags from the product. Remove the product and blower before opening the water line plug for draining. Empty water in the water bags and dry them in cool place for next time's use.
- Turn off the water supply, and empty water in the pool at the end.
- Turn the blower (air pump) power switch to OFF.
- Unplug the blower (air pump) power cord.
- Loosen the Velcro and detach the inflation tube from the blower.
- The product should deflate on its own within 5 minutes. Make sure the product is entirely deflated. (Refer to picture I)
- Remove ground support stakes. Remove water jet set and water bags if available.
- Please ensure the water jet set and water bags are stored separately with the water slide.
- Fold the product in half from both ends, and then fold it in half 2 more times from both sides, vertically to the first fold. (Refer to picture J,K,L)
- Roll it up tightly from the end opposite the inflation tube. (Refer to picture M,N)
- Slip the carry bag over the folded product and stakes (plastic balls or water bags). Zip the bag. (Refer to picture O)

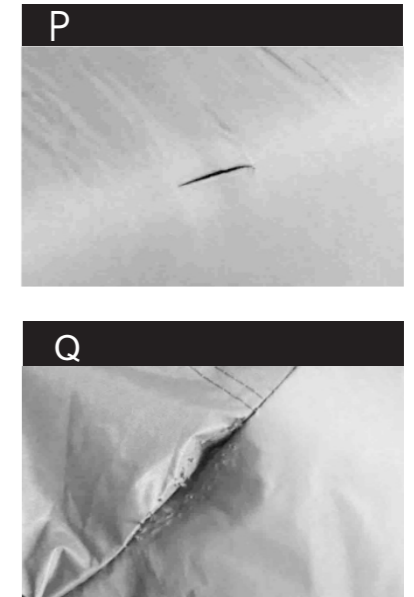


REPAIR

In case of any breakage of product, please patch up through hand sewing. Each type of product is provided with a repair kit which includes six pieces of cloth (in three colors; each color has two pieces) and three 20-meter long threads of different colors. Sewing needles are not provided and you should purchase by yourself (3# sewing needle is suggested).

- Turn off air blower and deflate the product.
 - Thread a needle with a spare thread and tie a knot at its end.
 - Close up the broken cloth and sew along the gap. Tie a knot after sewing to avoid loose thread.
- *In case of cloth breakage (as shown in picture P), please cover the breakage with a piece of patching cloth of proper size. Then sew up the patching cloth along its sides. While repairing, you should take notice that the sewing should only occur on the surface layer of the original cloth rather than reaching its underlayer.

- *In case of breakage in the seam position (as shown in picture Q), the sewing should only occur between the two split cloth rather than reaching the underlayer or any other cloth.
- *In case of large-size breakage or internal structural damage, please change product or have professionals do the repairing. Air leakage is normal in the repaired position and air pressure of the repaired product maybe lower than the original. But it will not affect the normal use of the product.
- Patching in one position for more than twice is not suggested.
- Needles should be taken good care of and not be left on the product after sewing.
- It is suggested that persons with sewing technique should do the repairing work.
- In case of any confusion about the aforementioned instruction, please refer to our website www.happyhopkids.com .



MAINTENANCE

- ▶ Checks and maintenance of the main parts of the toys should be carried out of regular intervals, if these checks are not carried out the toys could overturn or otherwise become a hazard. Whenever practical, the instructions shall also be affixed to the toy.
- ▶ The seasonal inspection and maintenance should be conducted for any damage or leakage of the product.
- ▶ Do not store the product when wet. Store the product and the blower indoors in dry conditions when not in use. Keep away from sun and rain. Keep water away from the blower (air pump) at all times.
- ▶ Service life of the product will be compromised if it is exposed to sun and rain and stored in humid places or other improper places. Accessories such as water pipe and water bag should be separately stored from the product.
- ▶ In case of moldy water slide and softening cloth due to improper storage, we will not provide after service and changing or refunding service.
- ▶ Cleansing activity should be conducted with clear water or weak alkaline water to remove stains and smudges on the product each time after using.
- ▶ Dismantle the water pipe and unwater it. Water pipe and its accessories should be put separately (water products).
- ▶ Air the product under sunshine until it is totally dried.
- ▶ If there is no sunlight, dry the product with an air blower.
- ▶ Put the dried product into a bag and place it in shady and cool places. Do not put the product directly on the ground. Guard against moisture, and keep it away from direct sunlight and rain.