

# EUROMATIC



## Air Purifier

### INSTRUCTION MANUAL

Model Number APMR45

**AFTER SALES SUPPORT**

**(AU) 1300 886 649 (NZ) 0800 836 761**



# Contents

- 03 General Safety Instructions**
- 06 Product Overview**
- 08 Getting Started**
- 10 Instructions**
- 12 FAQs & Troubleshooting Guide**
- 13 Other Useful Information**

# Important Safety Instructions

## READ CAREFULLY AND KEEP FOR FUTURE REFERENCE

Read this manual thoroughly before first use, even if you are familiar with this type of product. The safety precautions enclosed herein reduce the risk of fire, electric shock and injury when correctly adhered to. Make sure you understand all instructions and warnings. Keep the manual in a safe place for future reference, along with the completed warranty certificate, your purchase receipt and the original packaging. If you sell or transfer ownership of this product, pass on these instructions to the new owner. **Always follow basic safety precautions and accident prevention measures when using an electrical appliance, including the following:**

### Electrical safety and cord handling

- **Electrical connection:** The unit comes with a plug ready for connection to your mains power outlet. Ensure your electrical outlet is properly installed and earthed and complies with your local electrical safety requirements.
- **Voltage:** Before turning on the air purifier, ensure the electrical voltage and circuit frequency correspond to those indicated on the appliance.
- **WARNING!** To reduce the risk of electrocution, never immerse the appliance in water or other liquid; never spill liquids into it. Do not place or store it where it can fall or be pulled into a tub or basin. If it accidentally has fallen into water, do not reach into the water. Immediately unplug it, let it dry and have it checked by an authorised service technician.
- **Moisture:** Do not use the appliance in a bathroom or laundry, or where it can be splashed with water. Do not use it outdoors or operate it with wet hands.
- **Power supply cord:** Do not kink or damage the cord. Do not pull the cord or place it near a heat source; keep it away from heated surfaces. Always unwind the cord completely to avoid overheating. Run the cord in such a way so that no one will trip over it. Do not cover the cord or run it under carpeting.
- **Extension cord/adaptor:** Do not modify the length of the power cord or use an extension cord or power adaptor. Do not share a single outlet with other appliances. Improper power supply can cause fire or electric shock.
- **WARNING!** To reduce the risk of fire or electric shock, do not use this appliance with any solid-state speed control device.
- **WARNING!** Turn off the unit and unplug it when it is not in use, before servicing, moving or cleaning it, before removing a filter and during a thunderstorm. When disconnecting, grip by the plug, do not pull by the cord.
- **Switching on/off:** Do not use the mains plug to start and stop the unit; always use the POWER button to start and stop the unit.

# Important Safety Instructions (Cont.)

- **WARNING:** If the unit is knocked over during use, turn it off and unplug it from the mains power supply immediately. Visually inspect the unit to ensure there is no damage. If you suspect the unit has been damaged, do not use it. Switch it off, unplug it and contact a technician or our after sales support centre for assistance. Do not pick up or operate a damaged appliance, or after it malfunctions or has been dropped or damaged in any manner.
- **Damaged cord:** If the supply cord is damaged, do not use the appliance. A damaged power supply cord must be replaced by the manufacturer or its service agent or a similarly qualified person in order to avoid a hazard.
- **RCD:** The installation of a residual current device (safety switch) is recommended to provide additional safety protection when using electrical appliances. It is advisable that a safety switch with a rated residual operating current not exceeding 30mA be installed in the electrical circuit supplying the appliance. See your electrician for professional advice.

## Usage conditions and restrictions

- **Intended use:** This appliance is intended for purifying indoor air in domestic environments. It is not suitable for commercial, industrial or trade use. Do not use it for any other purpose, and only use it as described in this manual.
- **Common sense:** These instructions are not intended to cover every possible condition and situation. As with any electrical appliance, common sense and caution are therefore always recommended when installing, operating and maintaining the unit.
- **No outdoor use:** Do not use the unit outdoors. It is for indoor use only.
- **Usage restriction:** This appliance is not intended for use by persons (including children) with reduced physical, sensory or mental capabilities, or lack of experience and knowledge, unless they have been given supervision or instruction concerning use of the appliance in a safe way and understand the hazards involved.
- **Children:** Supervise children to ensure they do not play with the appliance. Close supervision is necessary when any appliance is used by or near children. Cleaning and user maintenance shall not be made by children without supervision.
- **Unattended:** Do not leave the appliance unattended when in use.
- **Openings:** Do not obstruct the air intake or outlet openings. Do not insert any objects, or your fingers into the air inlet or air outlet openings.
- **Attachments:** The use of attachments not recommended or sold by the manufacturer may cause fire, electric shock or injury.

# Important Safety Instructions (Cont.)

- **Handle with care:** Do not shake the appliance vigorously or drop it from an elevation. Doing so will damage the product or shorten its lifespan. Do not sit or stand on the appliance, which may lead to potential injury. Do not press hard on top of the unit or place heavy things on top of it.
- **Location:** Always place the appliance on a dry, stable, level and horizontal surface. Never place it on an inclined or uneven surface. Do not use the appliance in an environment where oil is used or smoke is generated, such as in a kitchen.
- **Clearances:** Ensure there is a clearance of at least 50cm from walls and furniture or any other appliances.
- **Protect from heat:** Do not use the appliance near appliances that get hot during use, such as heaters, ovens or fireplaces. Avoid long-term exposure to direct sunshine.
- **No flammable gases:** Never locate the air purifier in an area where flammable and combustible gases are present. If combustible gas accumulates around the unit, it may cause a fire.
- **Moving the appliance:** When moving the air purifier, always turn it off first and disconnect the power supply, and then move it slowly. Keep the unit upward during transport and storage.
- **Misuse:** We accept no responsibility for any eventual injury or damage caused by improper installation, misuse or noncompliance with the instructions.

## Cleaning and maintenance

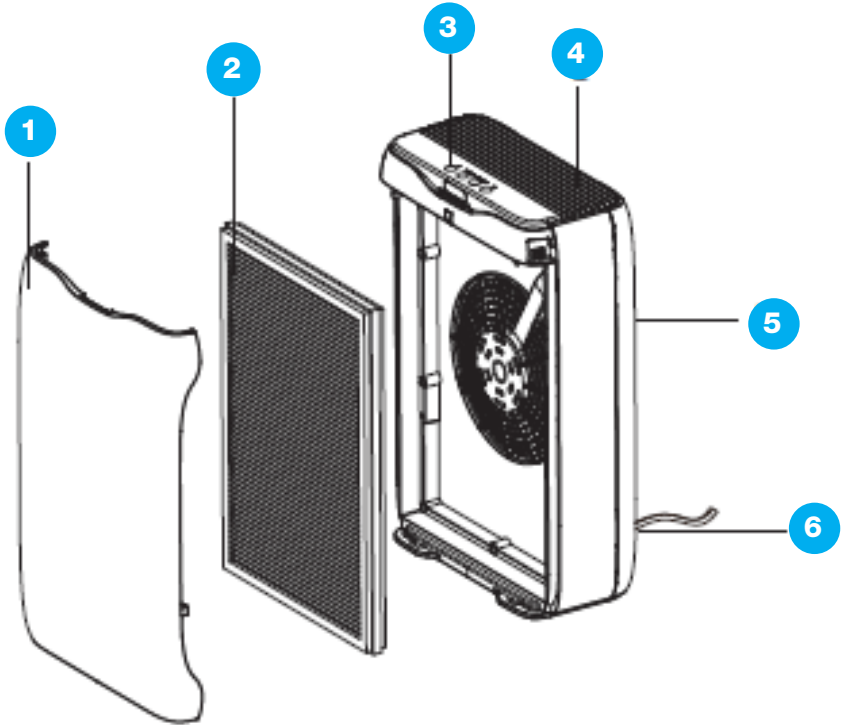
- **Disconnect:** Make sure the appliance is disconnected from the power supply when it will not be used for a long time and before cleaning or maintenance.
- **Service:** Except for the filter, the air purifier has no user-serviceable parts contained inside. Do not attempt to disassemble, modify or conduct repairs on this unit. It has been built in accordance with relevant safety and performance standards. An electrical specialist must carry out all repairs. If the appliance requires service, please contact our after sales support centre.
- **Cleaning:** Clean the outside of the unit once a month using a dry or slightly damp cloth (not wet!), or use a soft brush attachment of a vacuum cleaner. Never use water, wax, polish, or any other chemical solution to clean the outside of the unit.

Never use water or any household cleaners or detergents to clean the multi-layer filtration system; use a dry, soft brush to clean the filters and replace them when necessary.

# Product Overview

## Scope of delivery

### Air purifier



- 1 Front panel
- 2 3-in-1 filtration system  
(prefilter, HEPA-type filter, activated carbon filter coating)
- 3 Control panel
- 4 Air outlet
- 5 Back cover
- 6 Power cord and plug

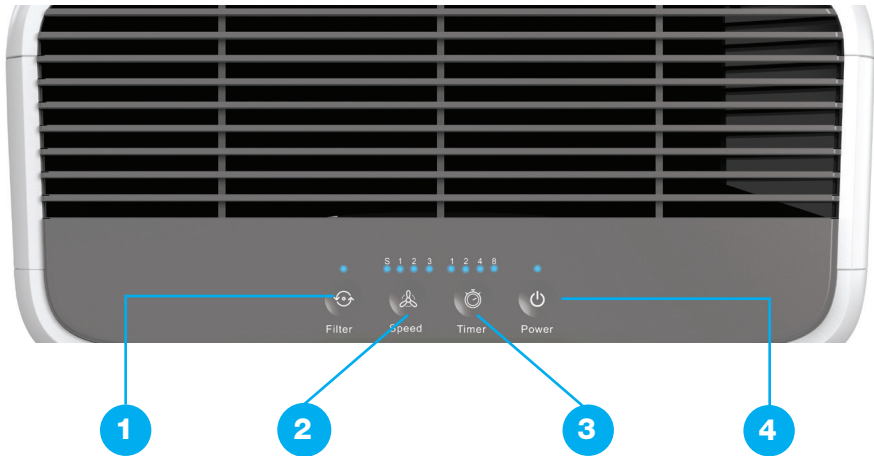
### Documentation (not shown)

Instruction manual, Warranty certificate

**NOTE:** Due to continued product improvement, images and illustrations in this manual may vary slightly from the product purchased. All images in this manual are for reference purposes only. Parts are not necessarily pictured to scale.

# Product Overview (Cont.)

## Control panel



- 1 FILTER button and indicator
- 2 SPEED button and indicators
- 3 TIMER button and indicators
- 4 POWER button and indicator

# Getting Started

## Before first use

- **Unpacking:** This product has been packaged to protect it against transportation damage. Unpack the appliance and keep the original packaging materials in a safe place. It will help prevent any damage if the product needs to be transported in the future, and you can use it to store the appliance when it is not in use. In the event that the packaging is to be disposed of, please recycle it where possible.
- **Safe packaging disposal:** Plastic wrapping can be a suffocation hazard for babies and young children, so ensure all packaging materials are kept out of their reach and disposed of safely.
- **Inspection:** Unwind the cord fully and inspect it for damage. Do not use the appliance if any part is damaged. In case of damage, contact our after sales support centre for advice.
- **Documentation:** Make sure you have read and understood all instructions and warnings in this manual. Refer the Product Overview to identify all parts of the appliance and familiarise yourself with its operating principles. Pay particular attention to the safety instructions on the previous pages.
- **IMPORTANT!** Before first use you will have to unpack the filtration system and install it into the appliance following the instructions on the next page.

## Features

- Control panel with touch controls for easy operation
- 4 Fan speeds
- 8 hour timer
- Filter replacement reminder

## Air purification system

The EUROMATIC Air Purifier is designed to help you keep your home clean and free of indoor air pollutants and allergens. It sucks the air in and through a multi-layer filtration system and releases the purified air through the outlet on top. The 3-in-1 filtration system consists of a HEPA-type filter with an activated carbon filter coating and a prefilter.

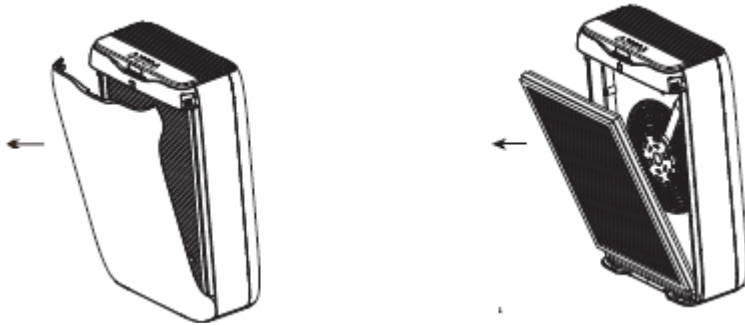
- The E11 HEPA-type filter captures 95% of microfine airborne particles such as dust, pollen, bacteria and smoke.
- The activated carbon filter coating attracts and neutralises harmful or undesirable fumes and odours from cleaning, cooking or new furniture.
- The prefilter traps bigger breathable particles, such as pet hair and dander.



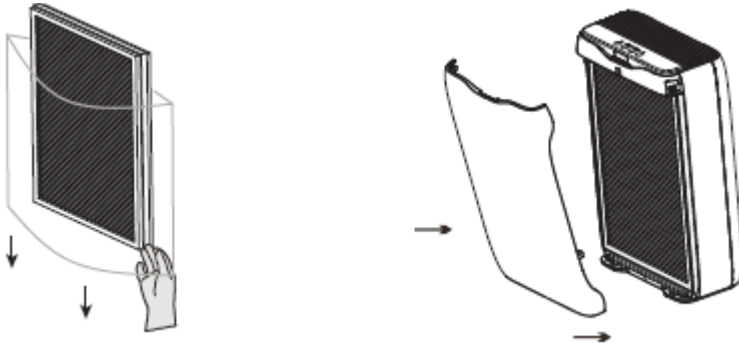
# Getting Started (Cont.)

## Filter installation

Before using the appliance, you will have to remove all packaging materials from the 3-in1 filter set, which is fitted inside the appliance in its original wrapping.



1. To remove the front cover of the appliance, grip it on both sides and pull it off.
2. Take the packaged filtration system out of the appliance.



3. Take the filter cartridge out of the plastic bag.
4. Reinstall the unpacked filtration system into the appliance.
5. Reinstall the front cover as shown. Make sure it clicks in securely.

# Instructions

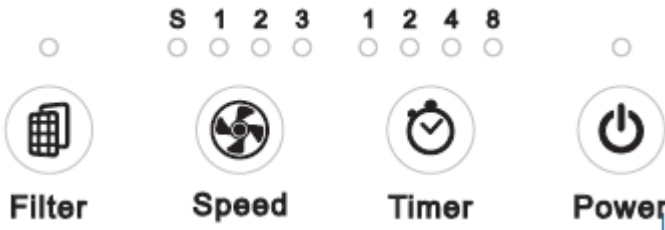
## Location

- Place the appliance on a dry, stable, level and horizontal surface. Never place it on an inclined or uneven surface.





## Connecting the air purifier and switching on/to standby

- Plug the appliance into a properly earthed mains socket and switch on power to the outlet. The appliance will enter standby mode.

## Control panel buttons and indicators



## Button operation

	Press the POWER button to turn on the unit. When the unit is running, press the button to switch it to standby.
	Press the SPEED button to select a speed from the following options: 1 -> 2 -> 3 -> S (Sleep)
	Press the TIMER button to set the off-timer to 1 / 2 / 4 / 8 hours. On the display screen the respective indicator light will illuminate.
	When this indicator flashes, it is time to clean or replace the filter cartridge. After cleaning/replacing the cartridge, press the FILTER button to reset the counter (see 'Filter reset', opposite).

# Instructions (Cont.)

## Sleep mode

In Sleep mode the machine runs at low speed and all indicator lights are off, except for the “S” indicator, which is lit at half-brightness.

Use the SPEED button to enter Sleep mode.

Press any button to exit Sleep mode.

## Filter reset

The air purifier has a filter indicator built in that automatically counts the usage time and reminds you when the filters need to be cleaned or replaced.

When you start the machine, the filter indicator begins counting the hours of usage. It will stop counting when the appliance is shut down or is in standby mode and resume counting when you switch it on again.

When the filter indicator has counted a total of 2000 hours, the Filter indicator will start flashing to alert you to clean or replace the filters.

- Please refer to page 13 for instructions how to clean the filters, or to page 14 for how to purchase replacement filters.
- To clear the accumulated time after you have cleaned or replaced the filters, press and hold the FILTER button for 3 seconds. The machine will emit a beep sound and clear the accumulated time and the indicator will turn off.

# FAQs & Troubleshooting Guide

If you experience problems with your air purifier, or it appears not to be operating correctly, check the information below for solutions to common problems. If you still cannot solve your problem, please contact our after sales support centre for advice. Do not attempt to repair the appliance yourself.

<b>Problem</b>	<b>Possible cause and solution</b>
The appliance does not switch on.	Power is not properly supplied — make sure the appliance is properly connected to your power supply and your electrical outlet is working.
	The electrical outlet is faulty — check whether the unit is working if connected to a different power outlet.
	The appliance is not switched on — ensure you have pressed the POWER button to switch on the appliance.
The appliance makes a loud noise.	The air purifier is located on an inclined surface — place the unit on a level surface.
	The filter is clogged — check all filters and clean or replace them as necessary.
	The air inlet is blocked — check and ensure that the air inlet and outlets are free of obstructions.
Poor air purifying effect, especially with regard to odours.	The filters are installed incorrectly — refer to page 13 for correct filter installation instructions.
	The filters may have reached the end of their lifespan — replace the filters.
An unpleasant odour is coming from the machine.	The filters need to be changed — replace the filters according to the instructions.
There is a burnt smell and/or smoke coming from the unit.	The unit is faulty — switch off and unplug the unit, then contact our after sales support centre.
	The filter parts are still in the original packaging — refer to page 13 for correct filter installation instructions.
The filter indicator does not turn off.	You may not have reset the counter — press the FILTER button to reset the counter.
The unit got wet and now works abnormally.	The unit is damaged — switch off and unplug the unit, then contact our after sales support centre.

# Other Useful Information

## Electric shock hazard!

Before cleaning and servicing, ensure the unit is switched off and disconnected from the power outlet to prevent possible injury.

### Cleaning the exterior parts of the appliance

When required, clean the outside of the unit using a clean and soft, dry or slightly damp cloth (not wet!). Use a dry cloth or a vacuum cleaner soft brush attachment for cleaning the air outlet and intake.

**CAUTION!** Never use water, wax, polish, or any other chemical cleaning agent to clean the outside of the unit.

### Filter maintenance

The 3-in-1 filtration system must be cleaned and/or replaced regularly to ensure efficient operation and maintain the unit in good working order. When the filter indicator flashes, it is time to clean or replace the filters.

1. To remove the front cover of the appliance, grip it on both sides and pull it off.
2. Take the 3-in-1 filtration system out of the appliance and clean/replace it as appropriate.



3. Use a soft, dry brush to remove dust and debris from the filters.  
**IMPORTANT!** Never use water or any household cleaners to clean the 3-in-1 filtration system.
4. When the filters are worn or damaged, or when the air purification effect remains poor after cleaning the filters, it is time to replace them. Spare filter cartridges are available for purchase from our after sales support centre.
5. After you have replaced the filters into the appliance, reattach the front cover and press the FILTER button to reset the counter.

# Other Useful Information (Cont.)

## Storage

If the appliance is not going to be used for an extended period of time, please store the unplugged appliance safely in the original packaging in a dry location, out of reach of children. Do not place any heavy items on top of appliance during storage as this may result in damage of appliance.

## Service, repair and spare parts

If you look after your air purifier it should give you years of good service. Should you experience problems with the appliance that you cannot solve yourself using the advice given in this manual, please contact our after sales support centre for advice. Do not attempt to open the appliance.

Our after sales support centre stocks spare filters for the air purifier. To purchase a filter set, call the centre on 1300 886 649 or email us at [info@tempo.org](mailto:info@tempo.org).

## Technical specifications

Power input	220–240V~ 50Hz
Rated power	47W
CADR	178m <sup>3</sup> /h
Dimensions (approx.)	310 x 153 x 466 mm
Weight (approx.)	3.53kg



### CLASS II - DOUBLE INSULATED APPLIANCE

This symbol indicates that the appliance has been designed in such a way that it does not require a safety connection to electrical earth (ground).



The RCM Mark (Regulatory Compliance Mark) indicates that the product complies with the relevant guidelines of the ACMA as well as corresponding government requirements for the safety of electrical devices.

## Compliance

This appliance has been fully tested and meets all requirements as set out by standards AS/NZS 60335.1 and AS/NZS 60335.2.65.

# Other Useful Information (Cont.)

## Responsible disposal

At the end of its working life, do not throw this appliance out with your household rubbish. Electrical and electronic products contain substances that can have a detrimental effect on the environment and human health if disposed of inappropriately. Observe any local regulations regarding the disposal of electrical consumer goods and dispose of it appropriately for recycling. Contact your local authorities for advice on recycling facilities in your area.

## Warranty returns

Should you for any reason need to return this product for a warranty claim, make sure to include all accessories with the product.

## Product does not work?

If you encounter problems with this product, or if it fails to perform to your expectations, make sure to contact our After Sales Support Centre on (AU) 1300 886 649 or (NZ) 0800 836 761 for advice.

Distributed by Tempo (Aust) Pty Ltd ABN 70 106 100 252

PO BOX 6056 Frenchs Forest, Australia NSW 2086

Customer Helpline:

(AU) 1300 886 649 (NZ) 0800 836 761

Email: [info@tempo.org](mailto:info@tempo.org)

For an electronic version of this manual, please contact our after sales support centre.