

'To order, or for enquiries

Phone: 1800 688 745

Phone: 03 5240 4444

Fax: 03 5240 4455

Email: sales@showerline.com.au

Web: www.showerline.com.au

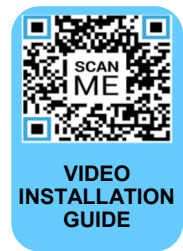
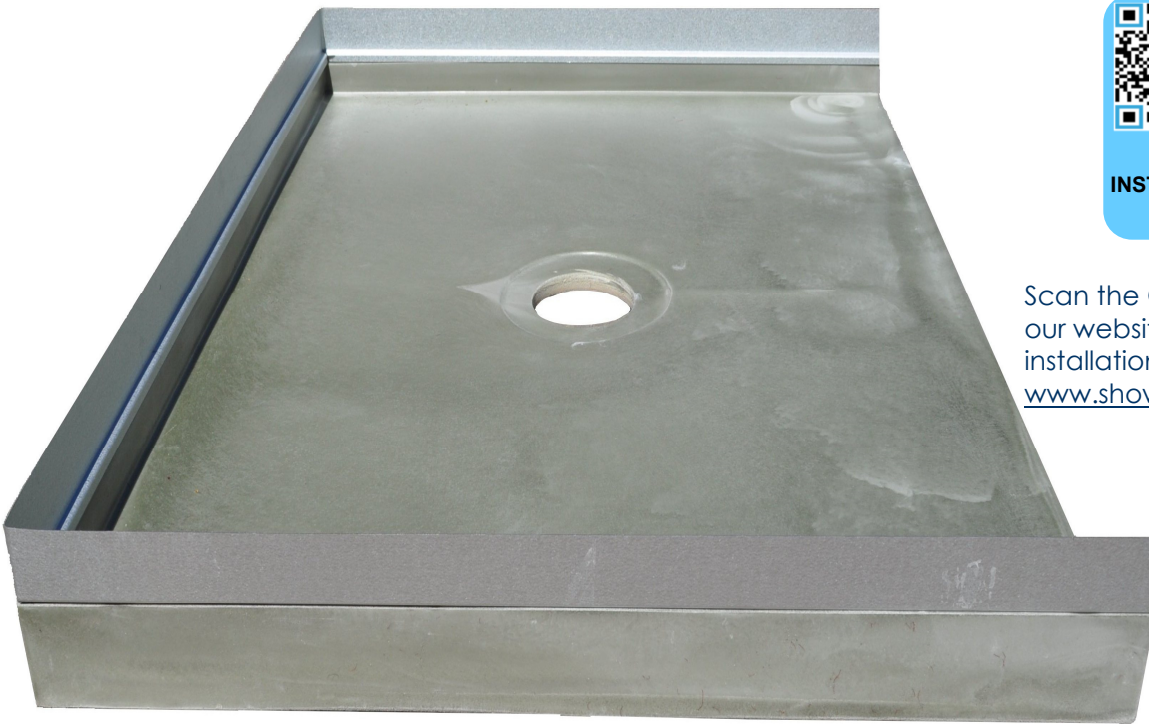


The complete shower company

Showerline Tile-Over Tray

100% Leak Proof - Your Insurance

- ☑ Absolute 100% leak proof (unique 'lip/ flashing' design)
- ☑ Supplied with pre-folded flashing (3 sides) and adjustable height waste outlet kit/grate
- ☑ Extremely strong - Lightweight
- ☑ Maintenance free
- ☑ Easy to install - non check-in
- ☑ Simplified plumbing connection
- ☑ Manufactured with 3 or 4 lips (easily trimmed for multiple level entry sides)
- ☑ AS3740-2010 compliant
- ☑ Suitable for masonry, timber, cfc or steel frame
- ☑ Designed & manufactured in Australia by an Australian owned company
- ☑ 7 year manufacturing warranty



Scan the QR code or visit our website to view video installation guide
www.showerline.com.au

Sizes Available

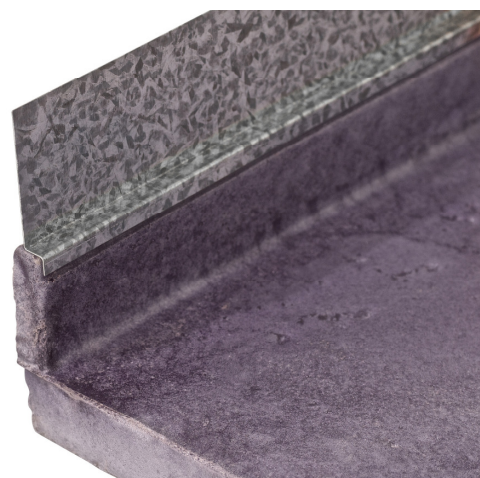
Item Code	Size/Outlet Position	Item Code	Size/Outlet Position
121.99.00.05	Tile-Over Tray 900 X 900 Centre Outlet (3 Sided)	121.99.00.10	Tile-Over Tray 1000 X 1000 Centre Outlet (3 Sided)
121.99.01.05	Tile-Over Tray 900 X 900 Rear Outlet (3 Sided)	121.99.01.10	Tile-Over Tray 1000 X 1000 Rear Outlet (3 Sided)
121.88.01.05	Tile-Over Tray 900 x 900 Rear Outlet (4 Sided)	121.88.01.35	Tile-Over Tray 1000 x 1500 Rear Outlet (4 Sided)
121.88.01.11	Tile-Over Tray 900 x 1100 Rear Outlet (4 Sided)	121.99.00.20	Tile-Over Tray 1200 X 900 Centre Outlet (3 Sided)
121.88.01.21	Tile-Over Tray 900 x 1200 Rear Outlet (4 Sided)	121.99.01.20	Tile-Over Tray 1200 X 900 Rear Outlet (3 Sided)
121.88.01.34	Tile-Over Tray 900 x 1400 Rear Outlet (4 Sided)		
121.88.01.37	Tile-Over Tray 900 x 1700 Rear Outlet (4 Sided)		

Manufactured with 3 or 4 lips

Easily trimmed for multiple level entry sides

Supplied with

- Pre-folded flashing (3 sides) to suit 6mm wall board
- Adjustable height waste 80 x 50mm outlet kit (includes grate)



Compatible installation products

For adhering tray to substrate

- Sikaflex – 11FC
- Dunlop Builders Bond
- Selleys 3 in 1 Silicon Sealant
- Selleys Proseries
- Ardex RA88
- Mapeflex PU45

For sealing flashing

- Selleys 3 in 1 Silicon Sealant

For expansion joints

- Polyblend S1 Sealant
- Ardex CA20P

For adhering tiles to tray

Step 1– Primer

- Aqua Blok Moisture Seal Primer
- Dunlop Primer & Additive
- Ardex WPM300 + Broadcast Sand
- Ardex Abapoxy + Broadcast Sand
- Ardex P9 Single Part Primer
- Gripset Betta Prime All
- Dunlop Primer & Additive

Step 2– Waterproofing Membrane

- Aqua Blok Rapid Waterproofing Membrane
- Betta Rapid Dry Waterproofing Membrane
- Sikalastic 560
- Ardex WPM 155 Rapid Waterproofing

Step 3– Adhesive

- Prohesive Ultrapro
- MCB A100 Tiling Adhesive
- Dunlop Tile-All
- Ardex Abaflex X77 +/- E90
- Ardex Abaflex X18 +/- E90
- Ardex WA100
- Mapei Kerapoxy 410
- Ardex STS8 + E90

For sealing over expansion joints

- Gripset/Betta peel & seal tape
- Ardex waterproofing detail tape



Scan the QR code or visit our website to view video installation guide
www.showerline.com.au