

# SLENDALINE TANKS

Delivery & Install details  
See pg. 31

Specifications  
See pg. 29

Colour range  
See pg. 20-21

## OUR QUALITY

These tanks are certified to the RAINWATER TANK STANDARD AS/NZS4766:2006 LICENCE NO. SMKP 21429



## SAVE SPACE & WATER

This 2100L Slendaline tank comes conveniently integrated with pump and changeover device perfect for developments or your own home.

- Fast and simple installation
- Clear access to pump
- Slim design for tight spaces

## ACHIEVING A 6 STAR ENERGY RATING

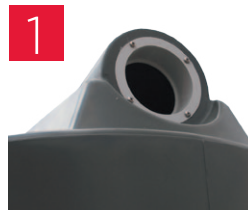


Did you know...  
by installing a Polymaster rainwater tank on your new house you comply with the 6 Star Energy Rating standard!

## POLYMASTER TANK SHOWING STANDARD FITTINGS



\* Door not shown for clarity.



Large 90mm Overflow



Leaf & mosquito proof mesh screen



25mm Outlet & Ball Valve



Pump installed with rain/mains changeover



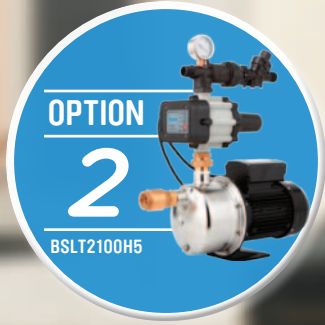
Door to conceal pump



Flexible hoses for quick connection

## SLT2100 SLENDALINE™ TANKS

CODE	TANK DESCRIPTIONS	PUMP DESCRIPTIONS
SLT2100	2100L Certified Slendaline Tank with a 10 year warranty	No pump supplied
BSLT2100H4	2100L PolyChoice Slendaline Tank with a 7 year warranty	Hyjet 370watt Pump and rain/mains automatic changeover device for single storey dwellings
BSLT2100H5	2100L PolyChoice Slendaline Tank with a 7 year warranty	Hyjet 550watt Pump and rain/mains automatic changeover device for multi storey dwellings
SLT2100APX	2100L Certified Slendaline Tank with a 10 year warranty	Zenox 750watt Pump with rain/mains changeover device for multi storey dwellings
SLT2100AP35	2100L Certified Slendaline Tank with a 10 year warranty	Onga 350watt Pump including rain/mains waterswitch controller for single storey dwellings
SLT2100AP45	2100L Certified Slendaline Tank with a 10 year warranty	Onga 450watt Pump including rain/mains waterswitch controller for multi storey dwellings
SLT2100GP	2100L Certified Slendaline Tank with a 10 year warranty	Flotec garden pump and constant pressure controller



# BUILDER

TANK + PUMP  
PACKAGES



## Easy Installation!

- Hassle free, Quality pump options
- Completely plumbed up to save time on site
  - Large range of colours

- **Easy, 10 minute** tank to toilet hook-up

Turn over for details | Contact us to discuss your pump option 1800 062 064

# TANK+PUMP PACKAGES

- HOUSEHOLD SYSTEM



## 2100L PolyChoice Slendaline Tank



### HYJET 370WATT PUMP - HHR400

Hyjet 370watt Pump and rain/mains automatic changeover device for single storey dwellings



\* Tank Only

### HYJET 550WATT PUMP - HHR550

Hyjet 550watt Pump and rain/mains automatic changeover device for multi storey dwellings



• 12 COLORBOND® colours to match any home

## 2100L Certified Slendaline Tank



### ZENOX 750WATT PUMP - ZPS800

Zenox 750watt Pump with rain/mains changeover device for multi storey dwellings



\* Tank Only



• 22 COLORBOND® colours to match any home

## 2100L Certified Slendaline Tank



### ONGA 350WATT PUMP - SMHW35

Onga 350watt Pump including rain/mains waterswitch controller for single storey dwellings



\* Tank Only

### ONGA 450WATT PUMP - SMHW45

Onga 450watt Pump including rain/mains waterswitch controller for multi storey dwellings

• 22 COLORBOND® colours to match any home

FOR PRICES CONTACT YOUR POLYMASTER DISTRIBUTOR.

All measurements are approximate due to variable shrinkage during manufacture. Due to pigment variations with raw material manufacturers, colour shades may vary. Smaller rainwater tanks need regular maintenance if drinking quality is to be maintained. Polymaster takes no responsibility for the quality of water held in a tank. \*Free delivery only applies to some regions and tank sizes. Contact us for details.

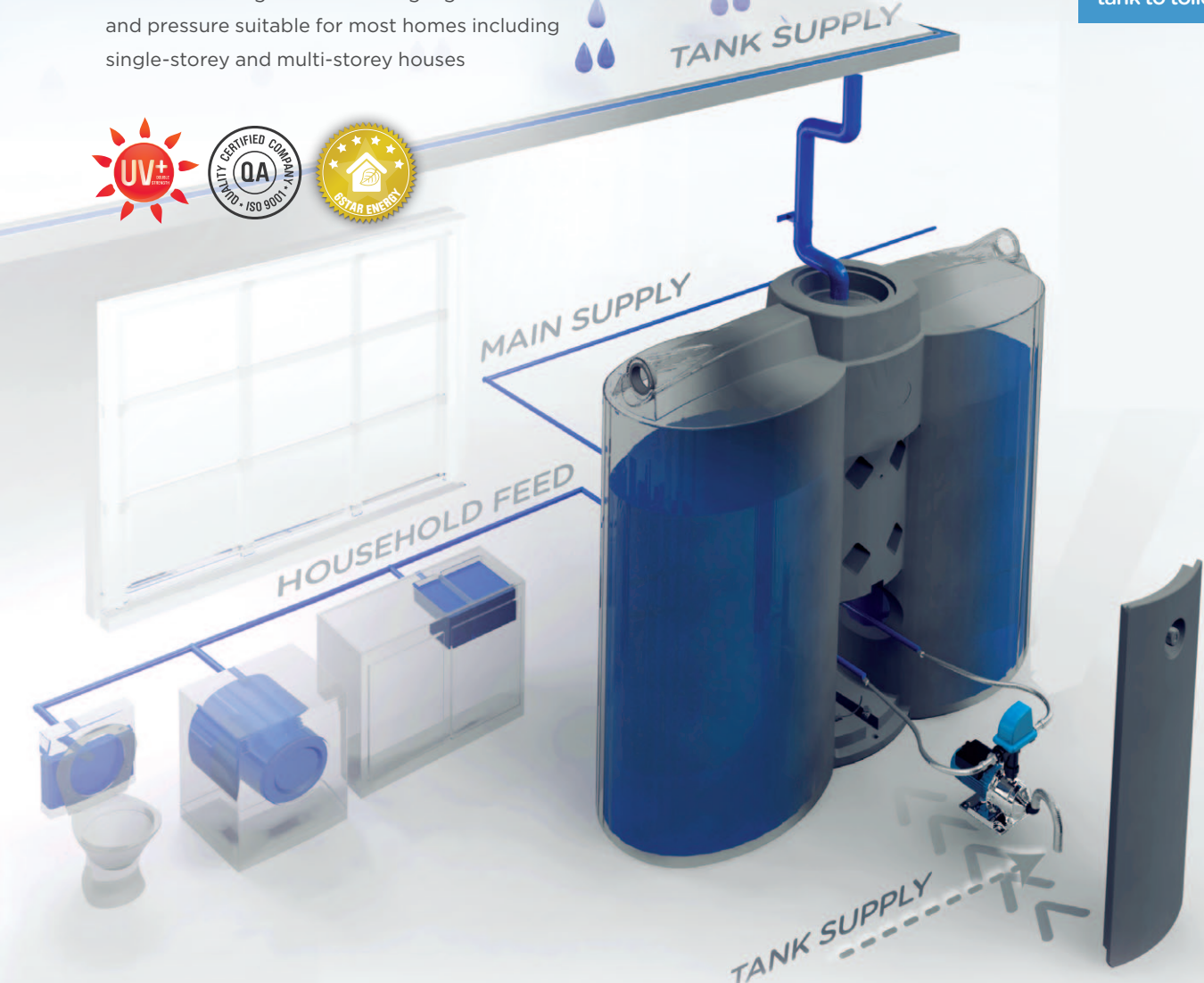


# HOUSEHOLD SYSTEMS

These systems include pump with rains to mains automatic changeover delivering high volume and pressure suitable for most homes including single-storey and multi-storey houses



Easy, 10 minute tank to toilet hook-up



ALSO AVAILABLE

# GARDEN SYSTEM

This tank and pump package is designed for garden & outdoor use, housing a pressure pump and a constant pressure controller.

