

RYOBI®

ORIGINAL INSTRUCTIONS

Petrol Hedge Trimmer

RHT25460RO



Important!

It is essential that you read the instructions in this manual before assembling, operating, and maintaining the product.

Subject to technical modification.

Safety, performance, and dependability have been given top priority in the design of your petrol hedge trimmer.

INTENDED USE

The petrol hedge trimmer is intended to be used only by adults who have read and understood the instructions and warnings in this manual and can be considered responsible for their actions.

The product is only intended for use outdoors in a well-ventilated area. For safety reasons, the product must be adequately controlled by using two-handed operation.

The product is designed for home or domestic use. It is intended to cut and trim hedges, shrubs, and similar vegetation where stems or twigs are less than 32 mm thick. It should be used in dry, well-illuminated conditions.

It is not intended to cut grass, trees, or branches. It should not be used for any other purpose than hedge trimming.

⚠ WARNING

To avoid serious personal injury, do not attempt to use the product until you read thoroughly and understand completely these instructions. Save these instructions and review frequently for continuing safe operation and instructing others who may use the product.

Save these instructions.

GENERAL SAFETY WARNINGS

⚠ WARNING

Read all safety warnings and all instructions. Failure to follow the warnings and instructions may result in electric shock, fire, and/or serious injury. Save all warnings and instruction for future reference.

PREPARATION

⚠ WARNING

The hedge trimmer can cause serious injuries. Read the instructions carefully for the correct handling, preparation, maintenance, starting, and stopping of the hedge trimmer. Become familiar with all the controls and the proper use of the hedge trimmer.

- Do not allow children or untrained individuals to use the product.
- Beware of overhead power lines.
- Keep all bystanders, children, and pets at least 15 m away. Avoid operating while people, especially children, are nearby.
- Dress properly. Do not wear loose clothing or jewellery, which can become entangled in moving parts.

⚠ WARNING

The operation of any power tool can result in foreign objects being thrown into your eyes, which can result in severe eye injury. Before operating the product, always wear safety goggles or safety glasses with side shields and, when needed, a full face shield. Ryobi recommends wide vision safety mask for use over eyeglasses or standard safety glasses with side shields.

- Do not operate the equipment when barefoot or when wearing sandals or similar lightweight footwear. Wear non-skid, protective footwear that will protect your feet and improve your footing on slippery surfaces.

⚠ WARNING

Exercise extreme caution when handling fuel. Petrol is flammable and the vapours are toxic and explosive.

- Use only fuel containers which are approved for petrol.
- Add fuel before starting the engine. Never remove the cap of the fuel tank or add fuel while the engine is running or when the engine is hot.
- Do not smoke.
- Always refuel outdoors. Never refuel indoors or in a poorly ventilated area. Keep away from all sources of ignition, sparks, and flames.
- Never store the product with fuel in the fuel tank inside a building where ignition sources are present, such as hot water and space heaters, clothes dryers, and the like.
- Wipe spilled fuel from the product. Move 9 m away from refuelling site before starting engine.
- Replace all fuel tank and container caps securely.
- If the fuel tank has to be drained, do this outdoors.
- If the cutting mechanism strikes any foreign object or the hedge trimmer starts making any unusual noise or vibration, shut off the power source and allow the hedge trimmer to stop. Disconnect the spark plug wire from the spark plug and take the following steps:
 - inspect for damage
 - check for, and replace, any loose parts.Damaged parts should be replaced or repaired immediately with parts having equivalent specifications.

⚠ WARNING

The product is extremely noisy in operation. You must wear ear protection to reduce the risk of long term hearing injury.

⚠ WARNING

Always wear safety goggles or safety glasses with side shields when operating the product. Failure to do so could result in objects being thrown into your eyes resulting in possible serious injury.

- To stop the hedge trimmer in an emergency. Press the on/off switch to the "STOP" position.



OPERATION

- Always stop the engine, disconnect the spark plug cap from the spark plug, allow it to cool, and make sure all moving parts have come to a complete stop before:
 - refuelling
 - cleaning the product
 - changing the accessories
 - checking for any damage if the product starts to vibrate abnormally
 - performing maintenance
- Only start the engine when the hedge trimmer is in a safe working position. The manufacturer recommends that the product is placed on the ground where the blades cannot contact anything before you start the engine.
- While operating the hedge trimmer, do not overreach or stand on unstable support. Keep proper footing and balance at all times. The manufacturer does not recommend the use of steps or ladders. If higher trimming is required, use an extended reach tool.
- Do not operate the product with a damaged or excessively-worn cutting device.
- To reduce fire hazard, keep the engine and the silencer free of debris, leaves, or excessive lubricant.
- Always ensure that all handles and guards are fitted when using the hedge trimmer. Never attempt to use an incomplete hedge trimmer or one fitted with an unauthorised modification.
- Always use two hands to operate the hedge trimmer which is fitted with two handles.
- Familiarise yourself with your surroundings and be on the alert for possible hazards which you may not notice because of the noise from the hedge trimmer.

ADDITIONAL WARNINGS

- Do not operate the engine in a confined space where dangerous carbon monoxide fumes can collect. Carbon monoxide is a colourless, odourless, and an extremely dangerous gas which can cause unconsciousness or death.
- Do not use the hedge trimmer when you are tired, ill, or under the influence of alcohol, drugs, or medication.
- Ensure before each use that all controls and safety devices function correctly. Do not use the product if the "off" switch does not stop the engine. The defective switch must be replaced by an authorised service centre.
- Inspect the hedge trimmer before each use. Check for fuel leaks or loose fasteners, etc. Do not operate if fuel is leaking or handles and guards are not secure and fully functional.
- Secure long hair so it is above shoulder level to prevent entanglement in moving parts.
- Do not operate in poor lighting. The operator requires a clear view of the work area to identify potential hazards.
- Check the work area before each use. Remove all foreign objects such as posts, wire, or string which may damage or become entangled in moving parts or cutting

means.

- Check constantly for persons or animals behind or inside any hedge or bush to be trimmed. Operating similar tools nearby increases both the risk of hearing injury and the potential for other persons to enter your working area.
- Check all nuts, bolts, and screws at frequent intervals for proper tightness to ensure the product is in safe working condition. Any part that is damaged should be properly repaired or replaced by an authorised service centre before use.

⚠ WARNING

When the throttle trigger is released and the engine is running at idle speed, the cutting attachment or blade must not move. If it does continue to move, there is risk of severe injury to the operator. Do not use the product. Bring it to an authorised service centre for professional adjustment.

- Do not touch the area around the silencer or engine of the product, these parts get very hot during operation.
- Do not modify the product in any way
- Do not force the hedge trimmer through heavy shrubbery. This can cause the blades to bind and slow down. If the blades slow down, reduce the pace.
- Do not attempt to cut stems or twigs that are larger than 32 mm thick, or those obviously too large to feed into the cutting blade. Use a non-powered hand saw or pruning saw to trim large stems.
- Ensure to keep a running or hot engine and silencer well away from combustible materials to reduce the risk of fire.

TRANSPORTATION AND STORAGE

- Stop the engine and allow it to cool before storing or transporting.
- Clean all foreign material from the product.
- Cover the blade with the blade protector (scabbard).
- Drain all fuel from the tank into a container approved for petrol. Remember to properly replace and tighten the fuel cap.
- Run the engine until it stops. This will remove all fuel that could become stale and leave varnish and gum in the fuel system.
- Store the product in a cool, dry, and well-ventilated place that is inaccessible to children and well away from sources of ignition.
- Keep away from corrosive agents such as garden chemicals and de-icing salts.
- Do not store outdoors.
- When transporting the product in a vehicle, secure it against movement or falling to prevent injury to persons or damage to the product.
- Never carry or transport the product while the engine is running.
- Abide all government and local regulations for the safety storage and handling of petrol.



Short term storage (less than 1 month)

- Stop the engine, and allow it to cool before storing.
- Cover the blade with the blade protector (scabbard).
- Store the product in a cool, dry, and well-ventilated place that is inaccessible to children and well away from sources of ignition.
- Keep away from corrosive agents such as garden chemicals and de-icing salts.
- Do not store outdoors.

MAINTENANCE

WARNING

Servicing requires extreme care and knowledge and should be performed only by a qualified service technician. For service we suggest you return the product to your nearest authorised service centre for repair. When servicing, use only identical replacement parts.

WARNING

Blades are sharp. When handling the blade assembly, wear non-slip, heavy-duty protective gloves. Do not place your hand or fingers between blades or in any position where they could get pinched or cut. Never touch blades or service the product with the spark plug wire connected.

WARNING

Do not, at any times, let brake fluids, solvents, gasoline, petroleum-based products, penetrating lubricant, etc., to come in contact with plastic parts. Chemicals can damage, weaken, or destroy plastic which may result in serious personal injury.

WARNING

Do not attempt to modify the product or create accessories not recommended for use with the product. Any such alteration or modification is misuse and could result in a hazardous condition leading to possible serious personal injury.

- You may make adjustments and repairs described in this manual. For other repairs, contact the authorised service centre.
- Consequences of improper maintenance may include excess carbon deposits resulting in loss of performance and discharge of black lubricant residue dripping from the silencer.
- After each use, clean the body and handles of the product with a soft, dry cloth.
- After each use, clean the debris from the blades with a stiff brush, and then carefully apply a rust preventative lubricant before refitting the blade protector. The manufacturer recommends you to use a rust preventative and lubricant spray to apply an even

distribution and reduce the risk of personal injury from contact with the blades. For information about suitable spray product, check with your local authorised service centre.

- Lubricate the blades lightly before use if necessary using the above method.
- Check all nuts, bolts, and screws at frequent intervals for proper tightness to ensure the product is in safe working condition. Any part that is damaged should be properly repaired or replaced by an authorised service centre.

REPLACING THE BLADES

- Periodically inspect the blades for damage and wear. If any blades are damaged, they should be properly repaired or replaced by an authorised service centre.

CLEARING A BLOCKAGE

- Stop the engine and wait for all moving parts to stop.
- Disconnect the spark plug wire.
- The blades are sharp. Wear heavy-duty gloves when working near the blades.
- Carefully clear away the blockage or debris from around the blades or other moving parts.

RESIDUAL RISKS

Even when the product is used as prescribed, it is still impossible to completely eliminate certain residual risk factors. The following hazards may arise in use and the operator should pay special attention to avoid the following:

- Injury caused by contact with cutting means
 - Ensure that the blade protectors are fitted when the product is not in use. Keep hands and feet away from the blades at all times.
- Injury caused by vibration
 - Always use the right tool for the job, use designated handles and restrict working time and exposure. See the section "risk reduction" in this manual.
- Hearing injury caused by exposure to noise
 - Wear hearing protection and limit exposure.
- Eye injury due to flying debris
 - Wear eye protection at all times.
- Injury caused by falling objects
 - Wear head protection if there is any risk of falling objects.

RISK REDUCTION

It has been reported that vibrations from hand-held tools may contribute to a condition called Raynaud's Syndrome in certain individuals. Symptoms may include tingling, numbness, and blanching of the fingers, usually apparent upon exposure to cold. Hereditary factors, exposure to cold and dampness, diet, smoking, and work practices are all thought to contribute to the development of these symptoms. There are measures that can be taken by the operator to possibly reduce the effects of vibration:

- Keep your body warm in cold weather. When operating the product, wear gloves to keep the hands and wrists warm. It is reported that cold weather is a major factor

contributing to Raynaud's Syndrome.

- After each period of operation, exercise to increase blood circulation.
- Take frequent work breaks. Limit the amount of exposure per day.

If you experience any of the symptoms of this condition, immediately discontinue use and see your physician.

⚠ WARNING

Injuries may be caused or aggravated by prolonged use of the product. When using any tool for prolonged periods, ensure you take regular breaks.

WHAT'S IN THE BOX

RHT25460RO

- Hedge Trimmer x1
- Operator's Manual x1
- Scabbard x1
- Lubricant x1
- Combination wrench x1
- HEDGESWEEP™ x1

SYMBOLS ON THE PRODUCT



Safety alert



To reduce the risk of injury, you must read and understand the operator's manual before using the product



Wear ear protection.



Wear eye protection.



Always hold the hedge trimmer with both hands when operating.



Wear non-slip, heavy-duty gloves.



To prevent serious injury, do not touch cutting blades.



Beware of thrown or flying objects. Keep all bystanders, especially children and pets, at least 15m away from the operating area.



Use unleaded gasoline intended for motor vehicle use with an octane rating of 91 ((R+M)/2) or higher.



Use synthetic 2-stroke lubricant for air cooled engines.



Mix the fuel and 2-stroke lubricant thoroughly before refuelling.



Warning! Hot surface.



Press the primer bulb 10 times.



"FULL" choke position.



"HALF" choke position.



"RUN" position.



Allow the engine to run for 10 seconds.



Pull the starter grip until the engine starts.



Press the trigger lock and the throttle trigger.



To rotate the rotating handle, pull the handle rotation trigger lock. Turn the handle to the right or left and release the handle rotation trigger lock. Keep turning the rotating handle until it locks in 45° or 90° position.



Starting a cold engine by hand.



Starting a warm engine by hand.



ON position



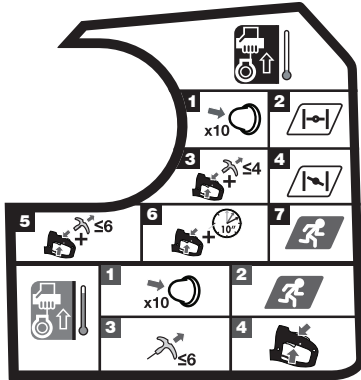
Stop position



The guaranteed sound power level is 108 dB.



Regulatory Compliance Mark (RCM). This product meets applicable regulatory requirements.



NOTE: Lay the product on the ground. Ensure that no objects and other obstructions in the vicinity that could come in contact with the blades.

To start a cold engine:

1. Slowly press the primer bulb 10 times or until the fuel appears.
NOTE: After the 7th press, the fuel should be visible in the primer bulb. If not, continue pressing until the fuel is visible.
2. Set the choke lever to “full-choke” position.
3. Press the trigger lock and the throttle trigger. Pull the starter grip until the engine attempts to start. Do not pull the starter grip more than 4 times.
4. Set the choke lever to “half-choke” position.
5. Press the trigger lock and the throttle trigger. Pull the starter grip until the engine starts. Do not pull the starter grip more than 6 times.
6. Press the trigger lock and the throttle trigger. Allow the engine to run for 10 seconds.
7. Set the choke lever to the “run” position.

To start a warm engine:

1. Slowly press the primer bulb 10 times or until the fuel appears.
NOTE: After the 7th press, the fuel should be visible in the primer bulb. If not, continue pressing until the fuel is visible.
2. Set the choke lever to the “run” position.
3. Pull the starter grip until the engine starts. Do not pull the starter grip more than 6 times.
4. Press the trigger lock and the throttle trigger.

SYMBOLS IN THIS MANUAL



Parts or accessories sold separately



Note



Warning



Do not smoke when mixing fuel or when filling the fuel tank.



Risk of fire



Stop the product



Lock



Unlock



Waste electrical products should not be disposed of with household waste. Please recycle where facilities exist. Check with your local authority or retailer for recycling advice.

The following signal words and meanings are intended to explain the levels of risk associated with the product.

⚠ DANGER

Indicates an imminently hazardous situation, which, if not avoided, will result in death or serious injury.

⚠ WARNING

Indicates a potentially hazardous situation, which, if not avoided, could result in death or serious injury.

⚠ CAUTION

Indicates a potentially hazardous situation, which, if not avoided, may result in minor or moderate injury.

CAUTION

Without safety alert symbol

Indicates a situation that may result in property damage.

MAINTENANCE SCHEDULE


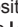

	Before each use	After first month or 25 hours of operation	Every 3 months or 50 hours of operation	Every 6 months or 100 hours of operation	Every year or after 300 hours of operation
Check air filter	■				
Clean air filter			■		
Change air filter					■
Check or adjust spark plug				■	
Replace spark plug		■			
Check or adjust idle speed ¹					■
Clean spark arrestor ¹			■		
Replace spark arrestor ¹					■
Clean fuel tank and filter ¹				■	
Check fuel hose	■				
Inspect fuel filter	■				
Replace fuel filter					■
Check all hose connections	■				
Inspect fuel tank vapour vent (if equipped)	■				
Inspect carbon canister (carburettor models only)	■				

1. These items should only be carried out by an authorised service centre.

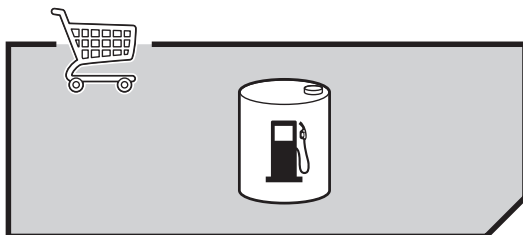
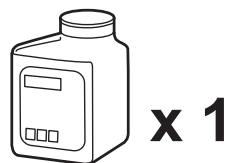
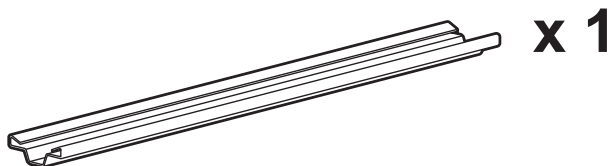
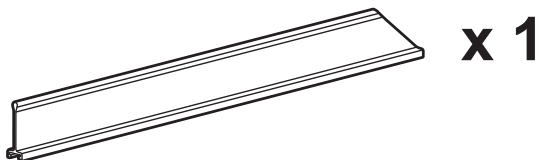
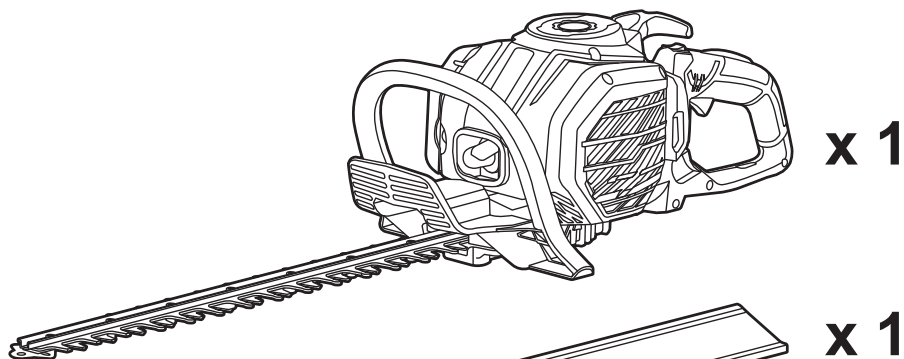
NOTES:

- Maintenance should be performed more frequently when product is used in dusty areas.
- When product has exceeded the maximum figures specified in the table, maintenance should still be cycled according to the intervals of time or hours stated herein.

TROUBLESHOOTING

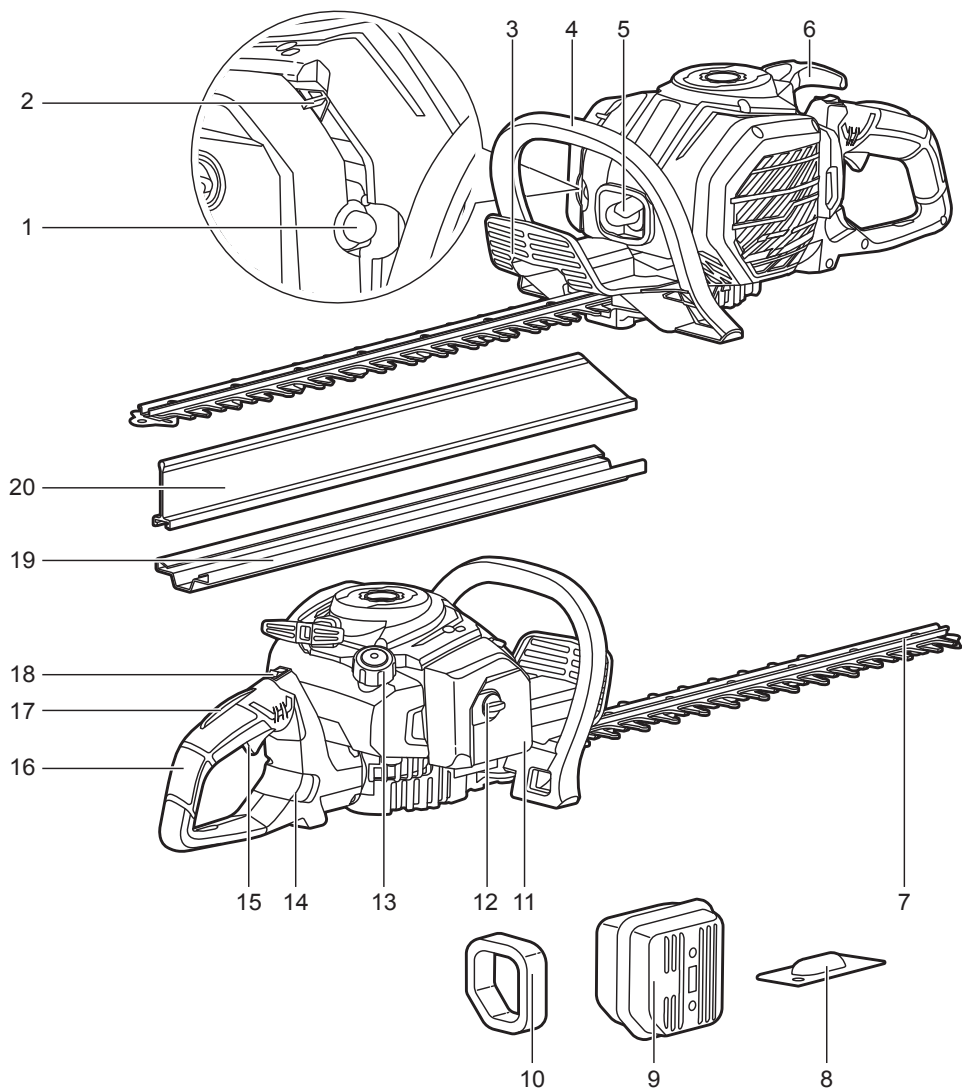
Problem	Possible cause	Solution
Engine will not start.	No spark	Check for spark. Remove the spark plug. Reattach the spark plug cap and lay spark plug on metal cylinder. Pull the starter rope and watch for spark at spark plug tip. If there is no spark, repeat test with a new spark plug.
	No fuel	Push primer bulb until the bulb is full of fuel. If bulb does not fill, the primary fuel delivery system is blocked. Contact a servicing dealer. If primer bulb fills, engine may be flooded, proceed to next item.
	Engine is flooded	Remove spark plug, turn engine to aim spark plug hole at the ground. Adjust the choke lever to  position and pull starter cord 10-15 times. This will clear excess fuel from the engine. Remove any fuel which is splashed on the unit. Clean and reinstall spark plug. Clean up any spilled fuel and move at least 9m away before restarting. Pull starter cord 3 times with choke lever at  position. If engine does not start, rotate choke lever to  position and repeat normal starting procedure. If engine still fails to start, repeat procedure with a new spark plug.
Engine starts but will not accelerate.	Starter rope is hard to pull.	Contact a servicing dealer.
	Engine requires approximately three minutes to warm up.	Allow engine to completely warm up. If engine does not accelerate after three minutes, contact a servicing dealer.
Engine starts but will only run at high speed at half choke.	Carburettor requires adjustment.	Contact a servicing dealer.
Engine does not reach full speed and emits excessive smoke.	Lubricant and fuel mixture is incorrect.	Use fresh fuel and the correct 2-stroke lubricant mix.
	Air filter is dirty.	Clean the air filter. Refer to Cleaning the Air Filter section in this manual.
	Spark arrester screen is dirty.	Contact a servicing dealer.
Engine starts, runs, and accelerates but will not idle.	Idle speed screw on carburettor requires adjustment	Contact a servicing dealer.

WHAT'S IN THE BOX

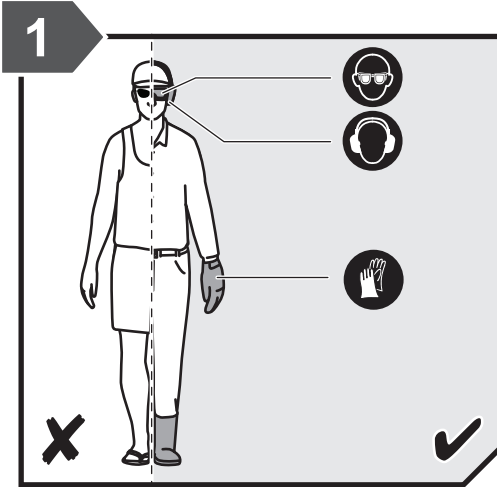


KNOW YOUR PRODUCT

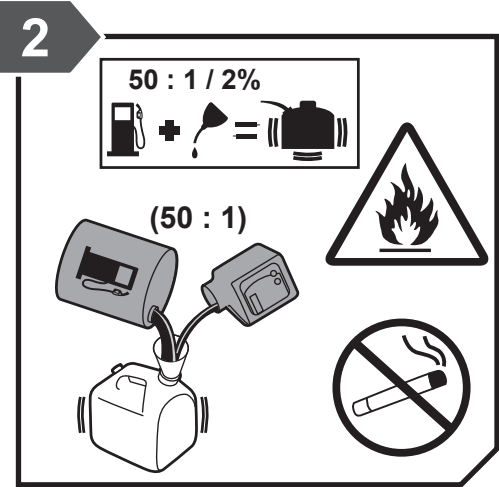
- | | | |
|--------------------|----------------------------------|---------------------------|
| 1. Primer bulb | 8. Spark arrestor | 15. Throttle trigger |
| 2. Choke lever | 9. Muffler | 16. Rotating handle |
| 3. Guard | 10. Air filter | 17. Throttle trigger lock |
| 4. Front handle | 11. Air filter cover | 18. On/Off switch |
| 5. Spark plug boot | 12. Air box cover knob | 19. Scabbard |
| 6. Starter grip | 13. Fuel tank cap | 20. HEDGESWEEP™ |
| 7. Blade | 14. Handle rotation trigger lock | |



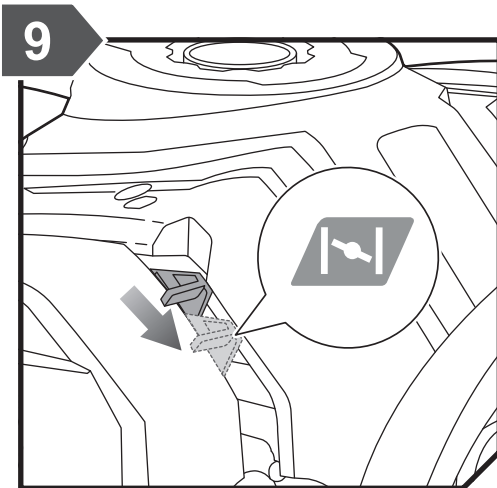
GETTING STARTED



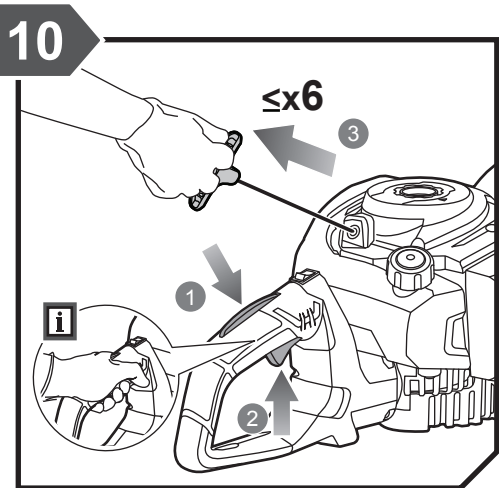
Always wear safety goggles or safety glasses with side shields when operating the product. Failure to do so could result in objects being thrown into your eyes resulting in possible serious injury. When handling the blade assembly, wear non-slip, heavy-duty protective gloves. Wear non-skid, protective footwear that will protect your feet and improve your footing on slippery surfaces.



Use synthetic 2-stroke lubricant only. Do not use automotive lubricant or 2-stroke outboard lubricant. Mix 2% synthetic 2-stroke lubricant into the petrol. This is a 50:1 ratio.

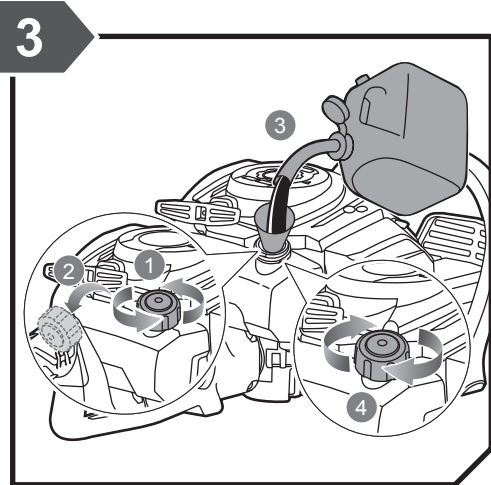


Set the choke lever to  position.

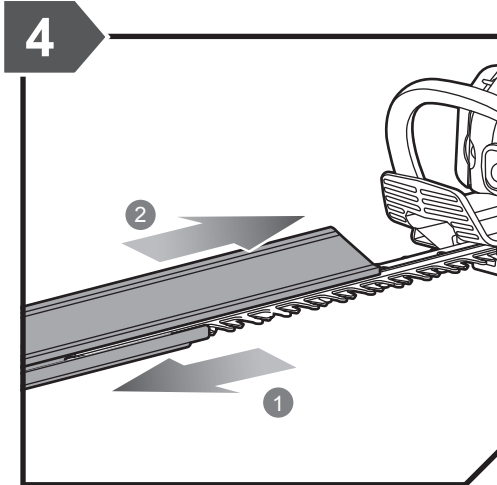


Hold and squeeze the rear handle, throttle trigger, and throttle trigger lock. Pull the starter grip until the engine starts. Do not pull the starter grip more than 6 times.

GETTING STARTED

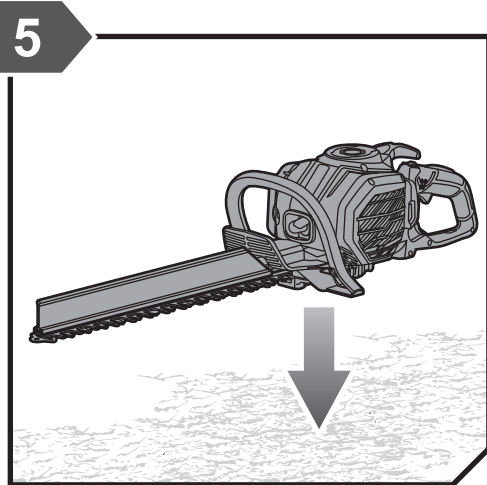


Loosen the fuel cap. Remove the fuel cap. Carefully pour fuel mixture into the tank. Avoid spillage. Immediately replace fuel cap and hand tighten.

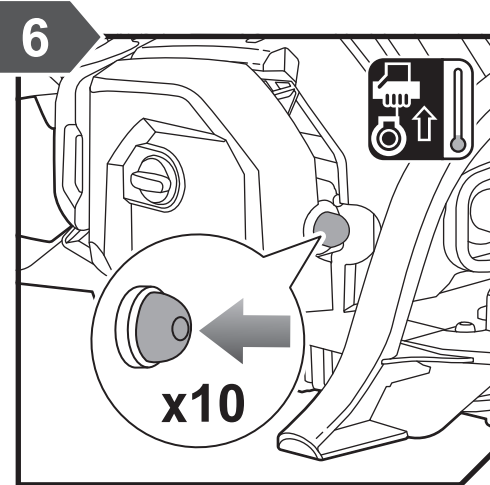


Remove the scabbard from the blade. Slide the HEDGESWEEP™ over the blade.

GETTING STARTED

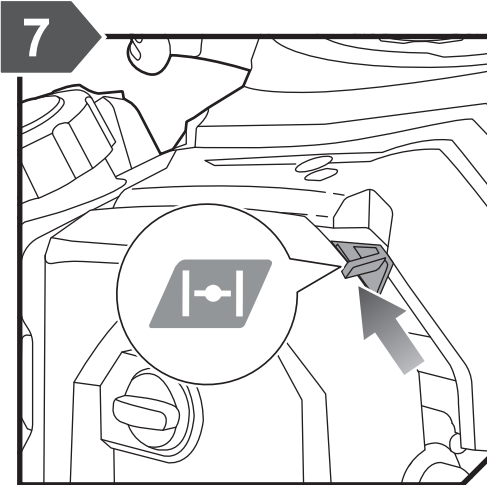


Lay the product on the ground.

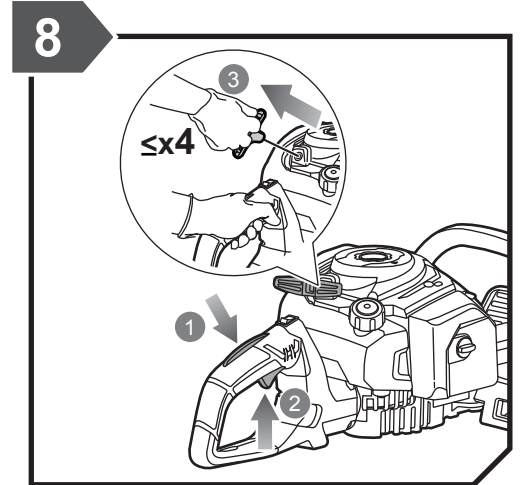


To start a cold engine, press the primer bulb 10 times.

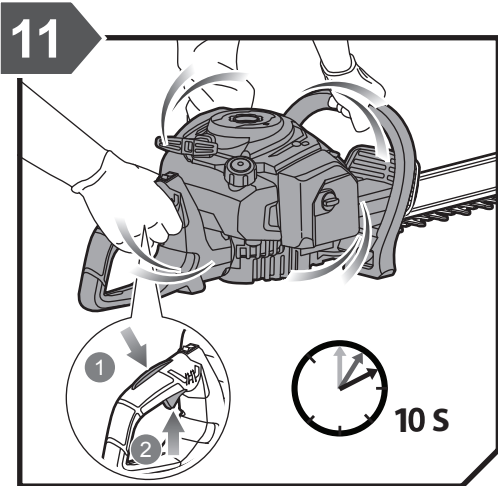
GETTING STARTED



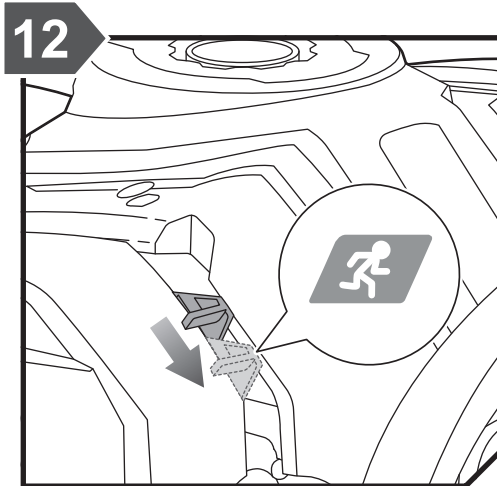
Set the choke lever to H position.



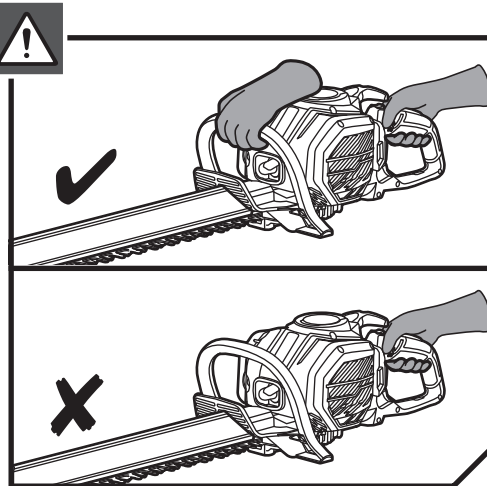
Press the trigger lock and throttle trigger. Pull the starter grip until the engine starts. Do not pull the starter grip more than 4 times.



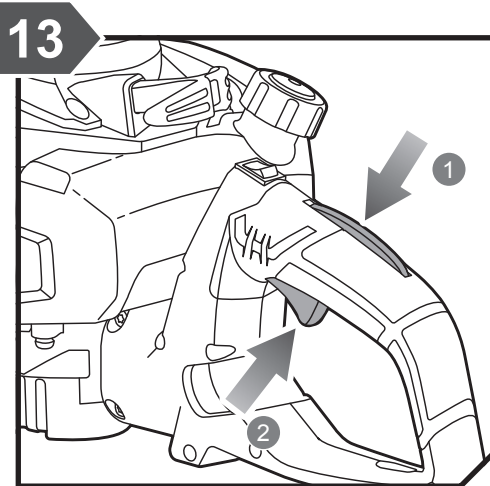
After engine starts, allow the engine to run for 10 seconds.



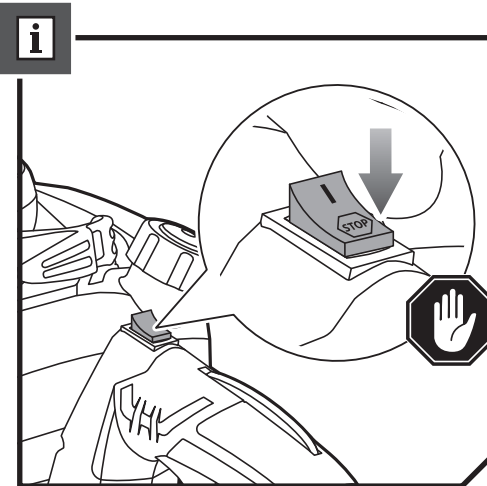
Set the choke lever to F position.



CAUTION: Always use two hands to operate the hedge trimmer which is fitted with two handles.

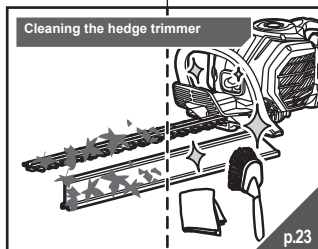
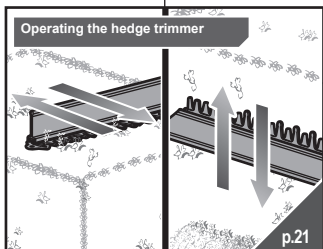
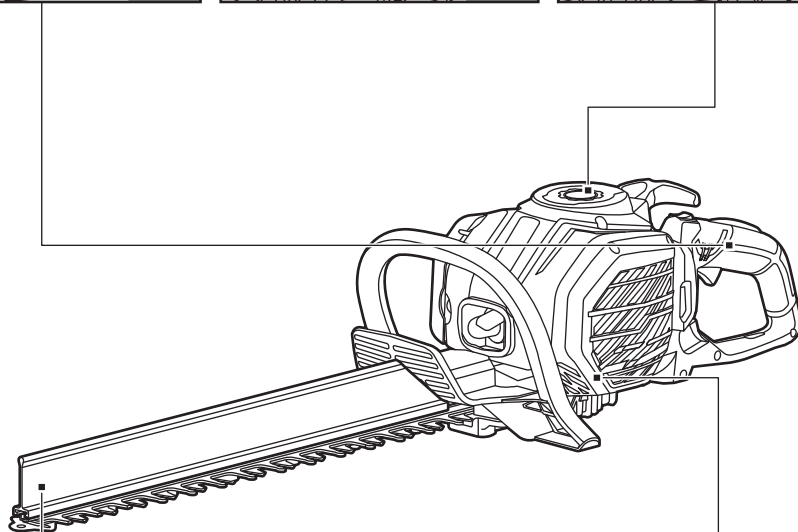
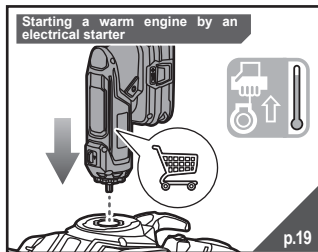
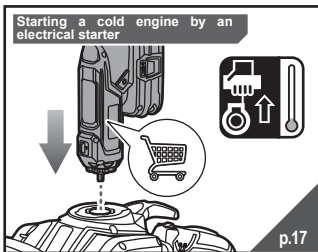
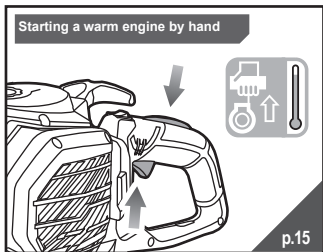


To operate the product, press the trigger lock and the throttle trigger.

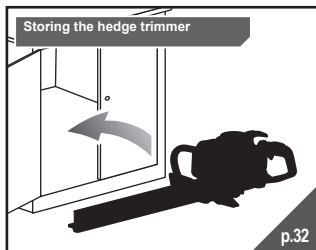
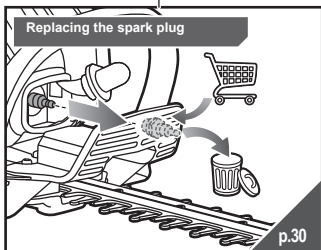
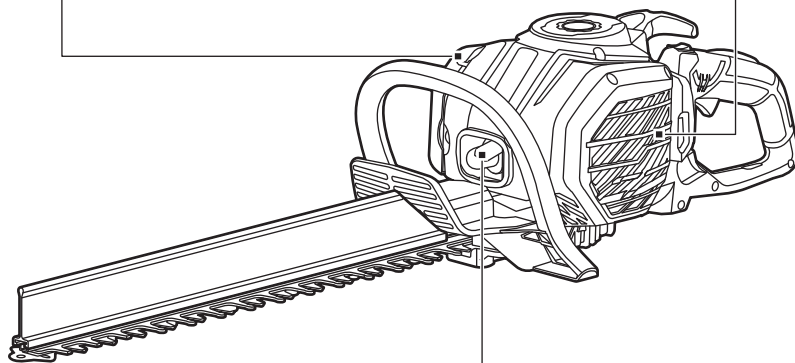
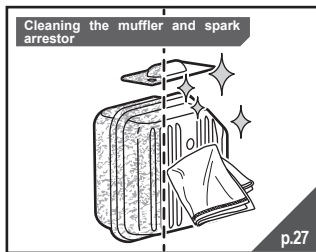
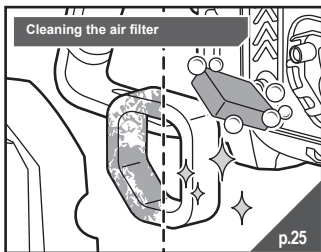


NOTE: To stop the engine, press the switch to the STOP position.

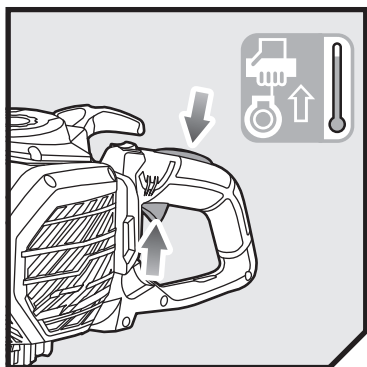
OVERVIEW




OVERVIEW

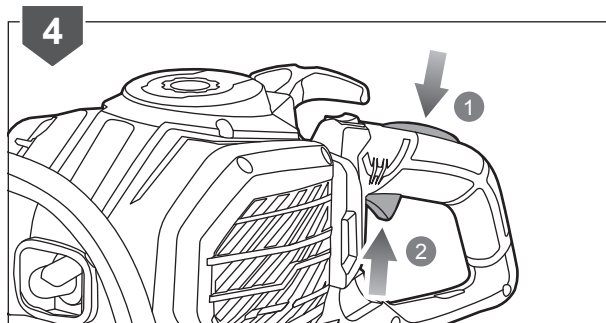
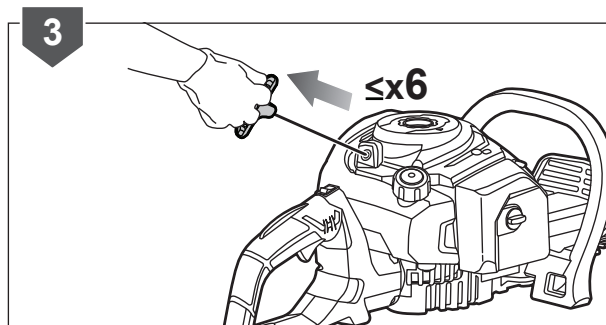
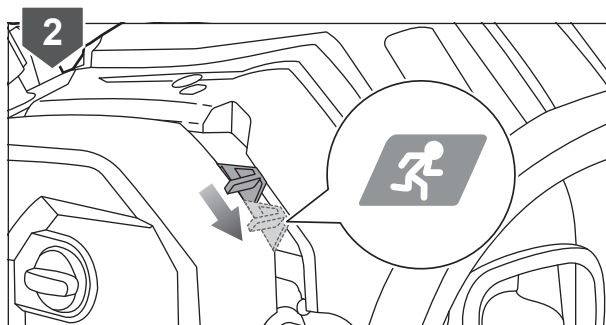
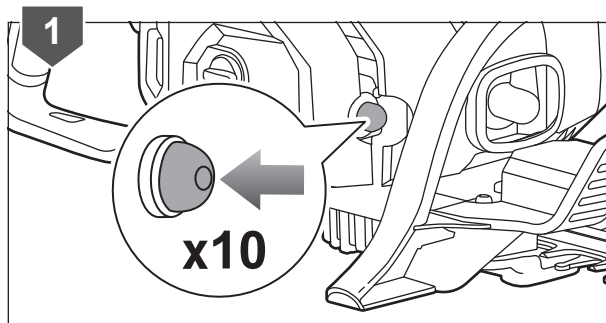


OPERATION



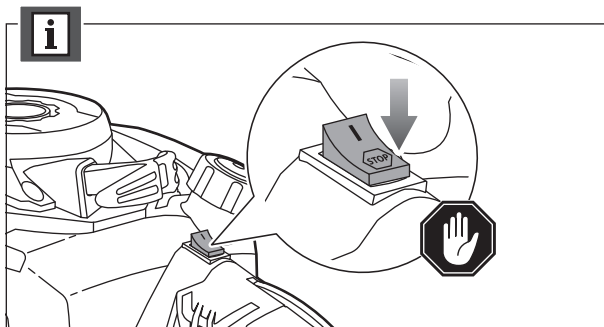
STARTING A WARM ENGINE BY HAND

1. Push primer bulb 10 times until the fuel appears.
2. Set the choke lever to  position.
3. Pull starter grip until the engine starts. Do not pull the starter grip more than 6 times.
4. Press the throttle trigger and throttle trigger lock.

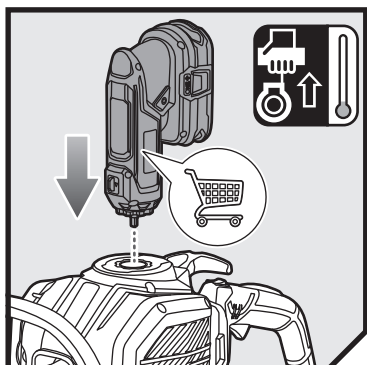


OPERATION

NOTE: To stop the engine, press the switch to the STOP position.



OPERATION



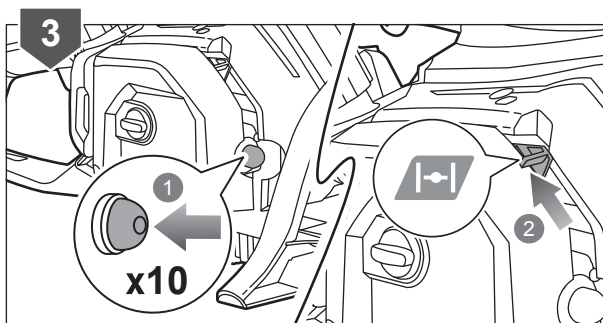
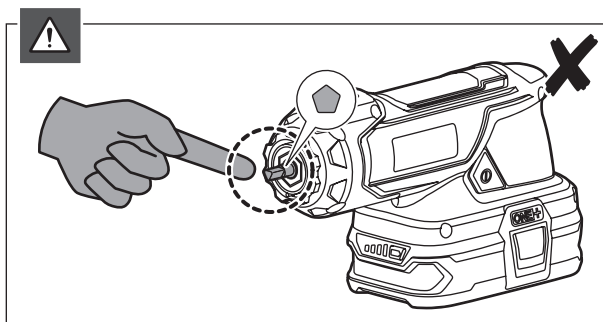
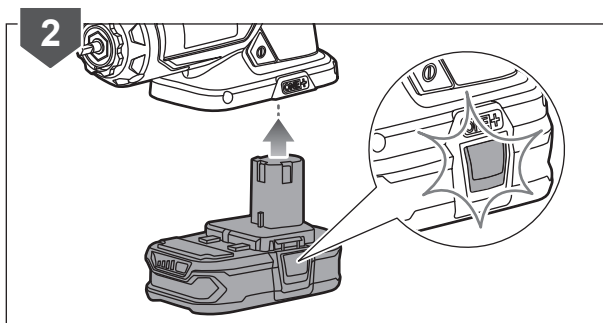
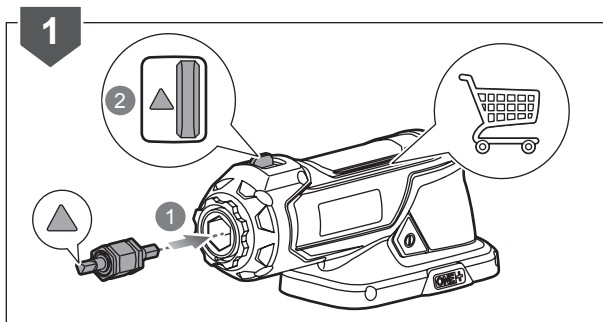
STARTING A COLD ENGINE BY ELECTRICAL STARTER (OES18)

1. Install the starter bit into the electrical starter with the pentagon bit facing outside. Push the F/R button to the left until the pentagon symbol shows on the F/R button.

2. Insert the battery pack into the electrical starter until it clicks into place.

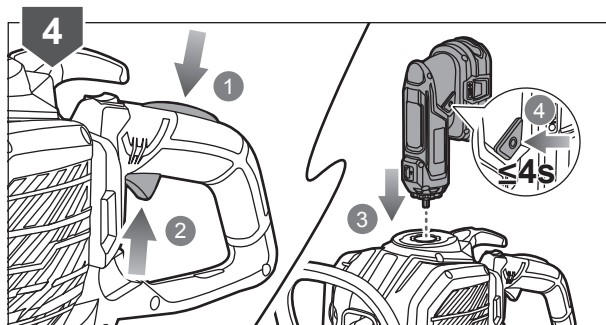
NOTE: Keep your hands away from the starter bit to avoid injury.

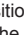
3. Press the primer bulb 10 times.
Set the choke lever to **I-II** position.



OPERATION

4. Hold and squeeze the rear handle, throttle trigger, and throttle trigger lock. Use your right hand to put the starter bit shaft to the shaft hole on the engine. Make sure the starter bit is properly engaged. Press and hold the electrical starter switch button until the engine attempts to start. Do not press the electrical starter for more than 4 seconds.



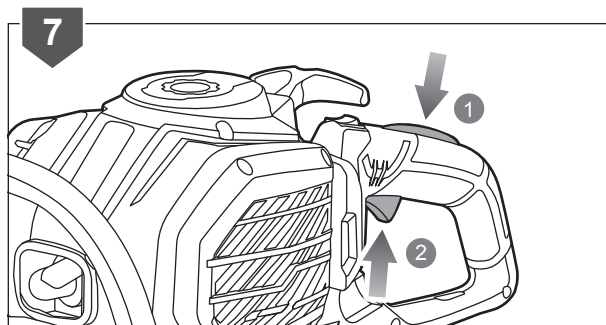
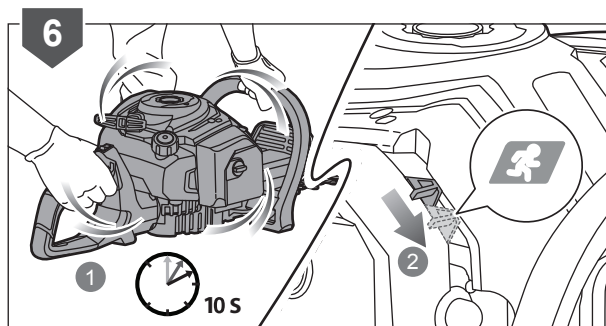
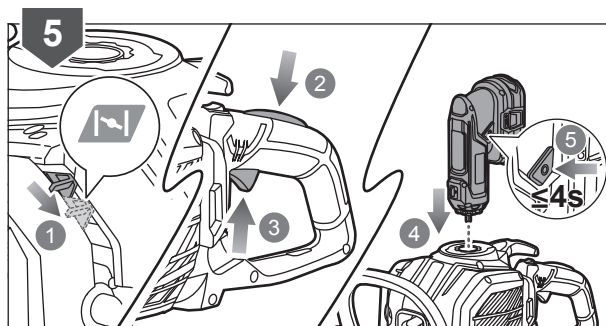
5. Set the choke lever to  position. Press the trigger lock and the throttle trigger.

Put the starter bit shaft to the shaft hole on the engine. Press and hold the electrical starter switch button until the engine attempt to start. Do not press the electrical starter for more than 4 seconds.

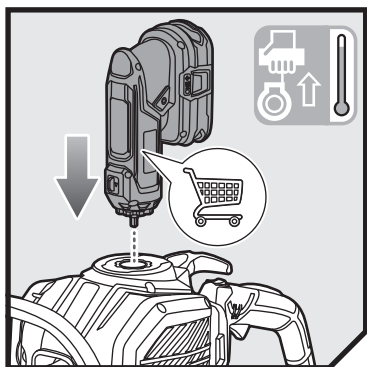
6. Allow the engine to warm up for 10 seconds prior to operation.

Set the choke lever to  position.

7. Press the throttle trigger and throttle trigger lock.




OPERATION

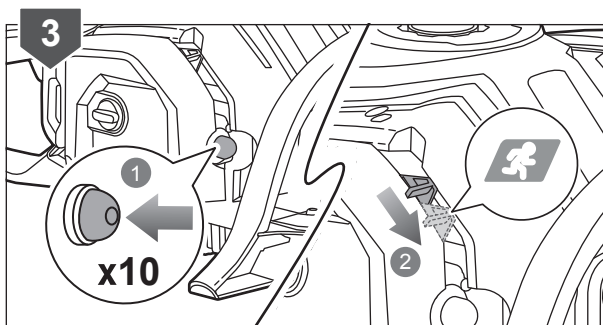
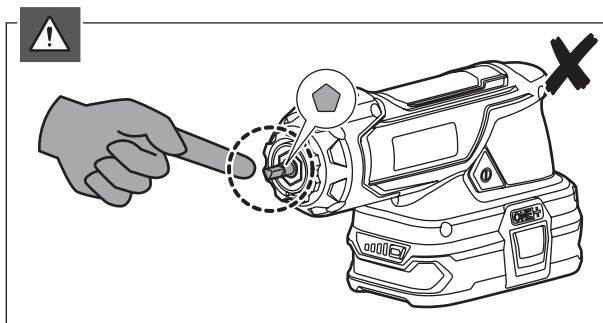
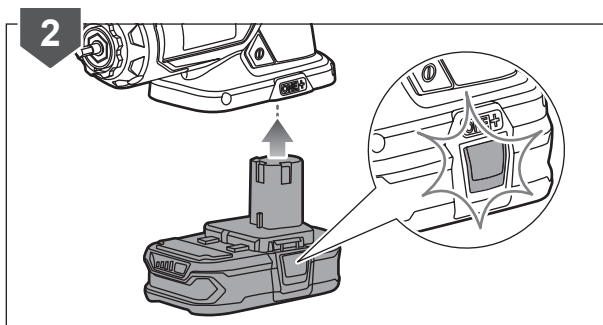
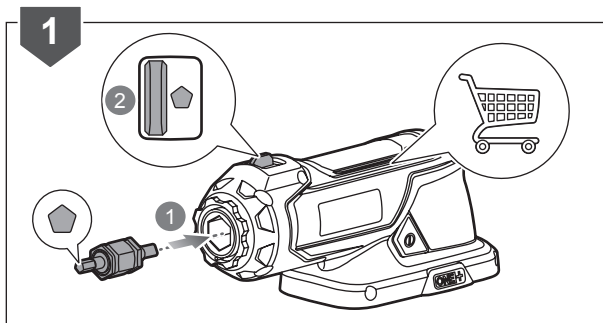


STARTING A WARM ENGINE BY ELECTRICAL STARTER (OES18)

1. Install the starter bit into the electrical starter with the pentagon bit facing outside. Push the F/R button to the left until the pentagon symbol shows on the F/R button.
2. Insert the battery pack into the electrical starter until it clicks into place.

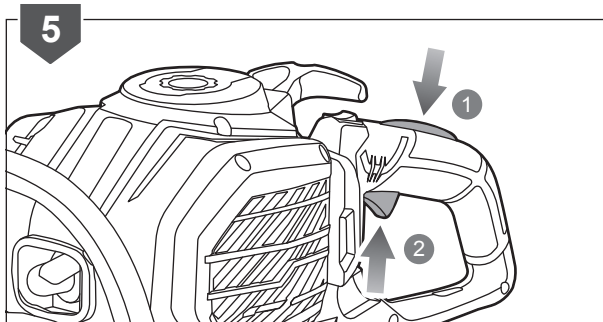
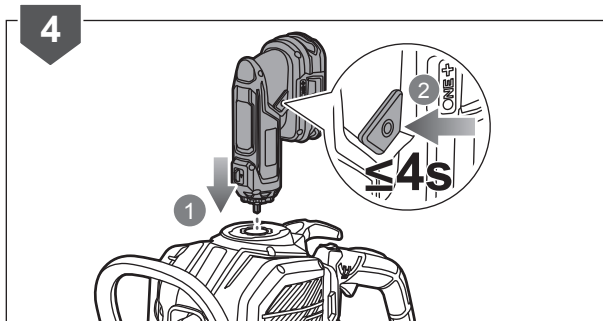
NOTE: Keep your hands away from the starter bit to avoid injury.

3. Press the primer bulb 10 times.
Set the choke lever to  position.

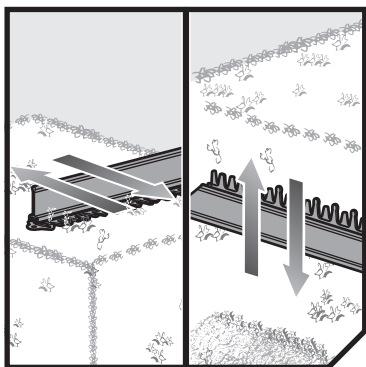


OPERATION

- Put the starter bit shaft to the shaft hole on the engine. Press and hold the electrical starter switch button until the engine attempts to start. Do not press the electrical starter for more than 4 seconds.
- Hold and squeeze the rear handle, throttle trigger, and throttle trigger lock.



OPERATION

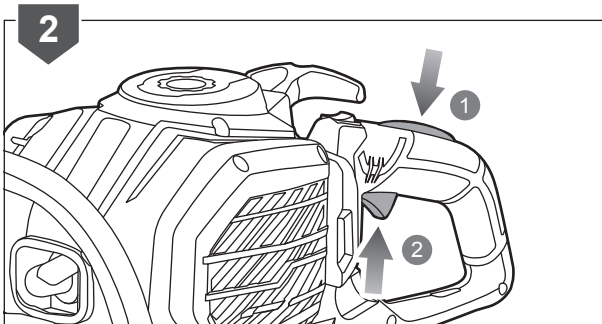
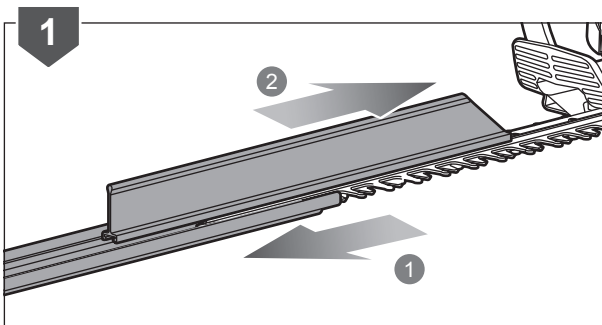
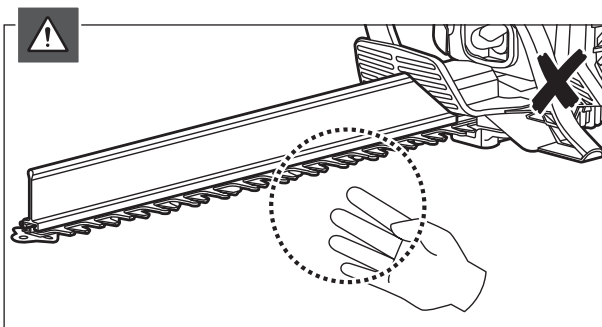
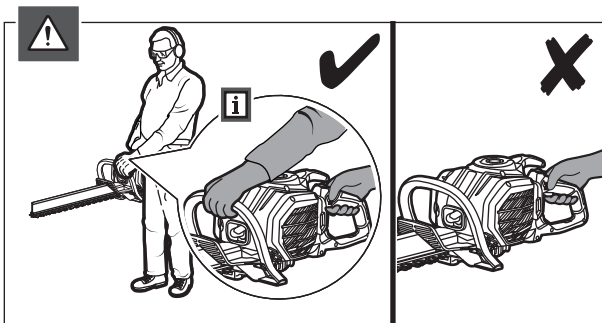


OPERATING THE HEDGE TRIMMER

CAUTION: Always use two hands to operate the hedge trimmer which is fitted with two handles.

WARNING: Keep hands away from the blades at all times.

1. Remove the scabbard from the blade.
Slide the HEDGESWEEP™ over the blade.
2. Press the trigger lock and throttle trigger.

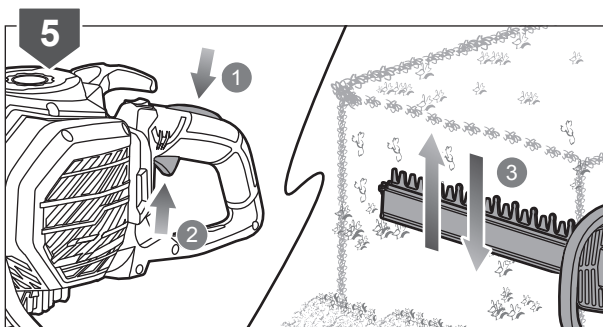
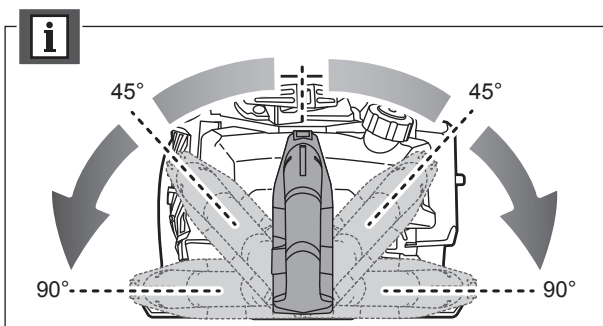
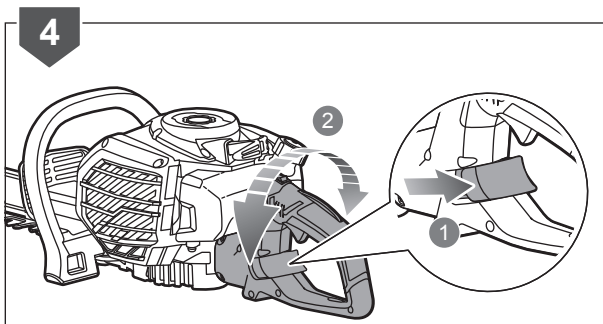
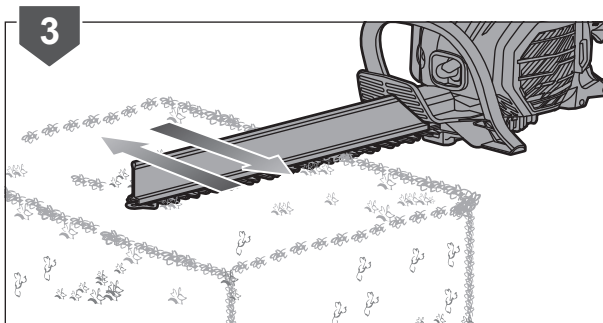


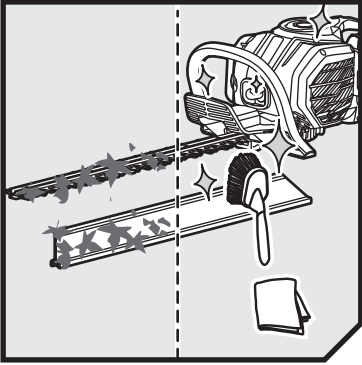
OPERATION

3. Use the hedge trimmer for cutting in a slow, sweeping action from side to side.
4. Pull the handle rotation trigger lock. Turn the handle to the right or to the left.

NOTE: The handle can be rotated 45° or 90° to the left or to the right.

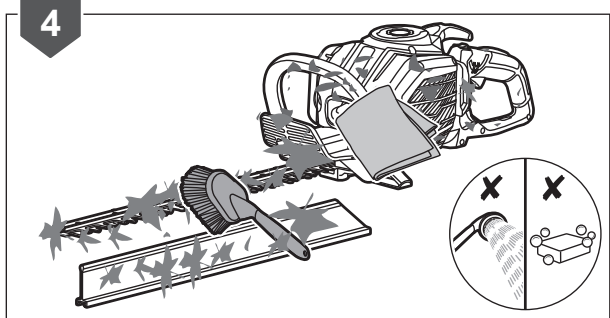
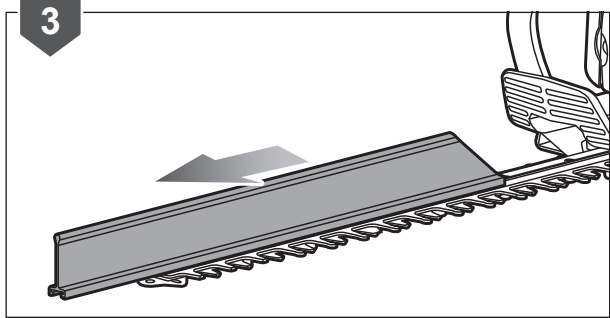
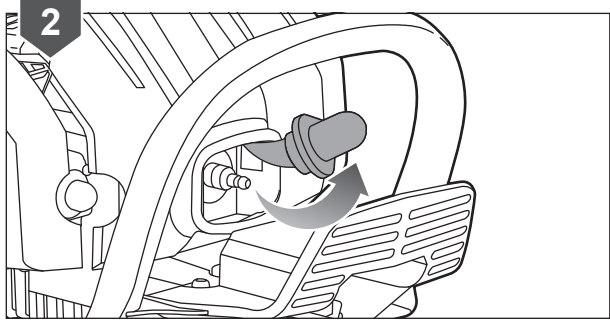
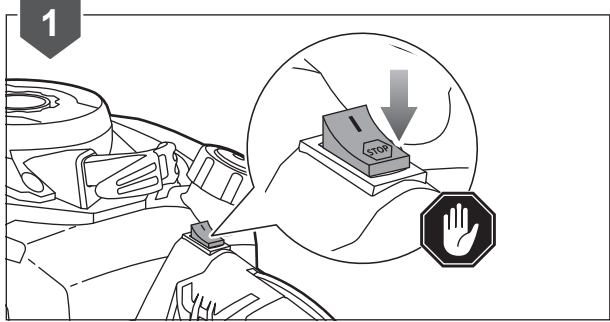
5. Squeeze the throttle lock and throttle trigger to run. Trim the side of a hedge from top to bottom.





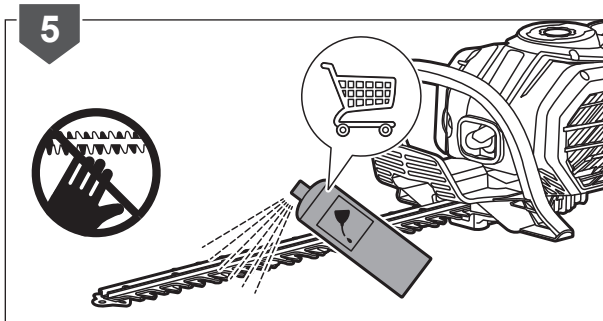
CLEANING THE HEDGE TRIMMER

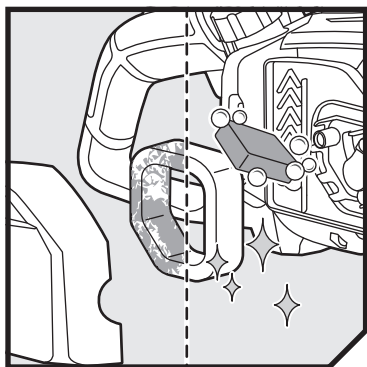
1. Press the switch to the STOP position to stop the engine.
2. Remove the spark plug boot.
3. Slide the HEDGESWEEP™ off the blade.
4. After each use, clean the body and handles of the product with a soft, dry cloth and a brush.



MAINTENANCE

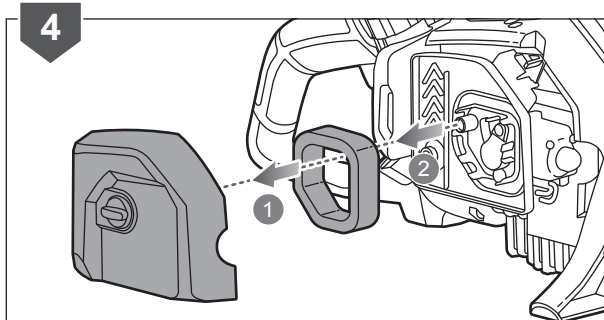
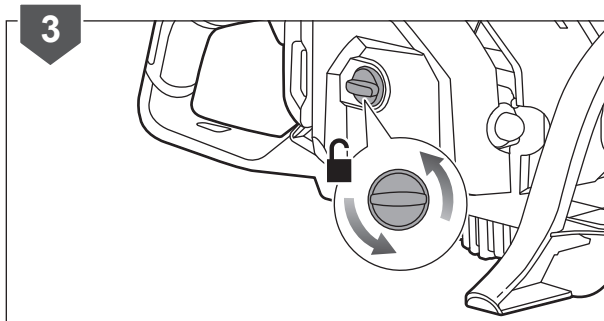
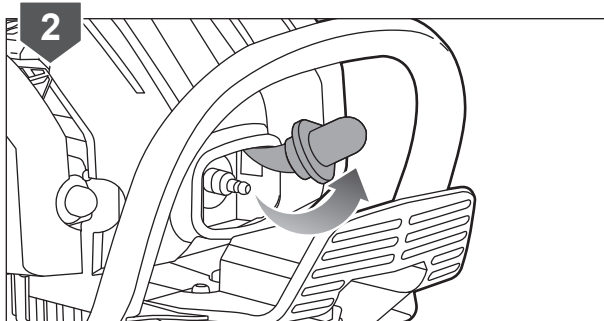
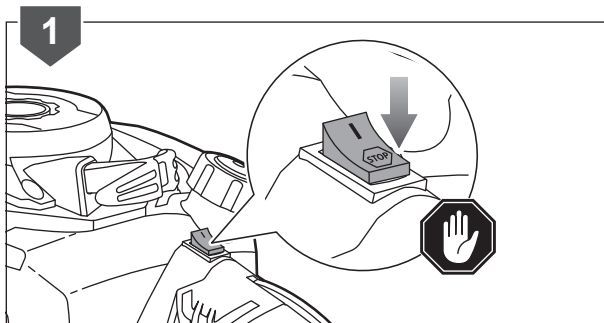
5. Lubricate the blades lightly before use if necessary.





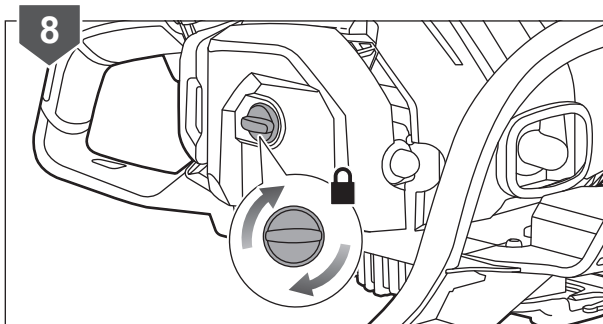
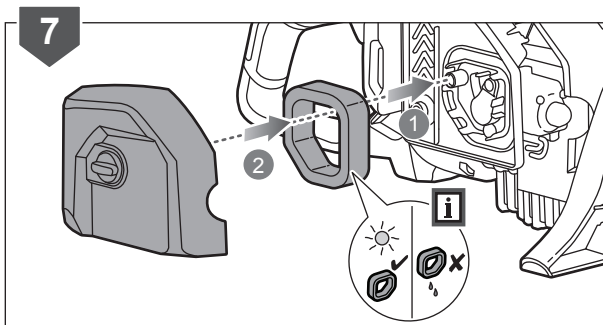
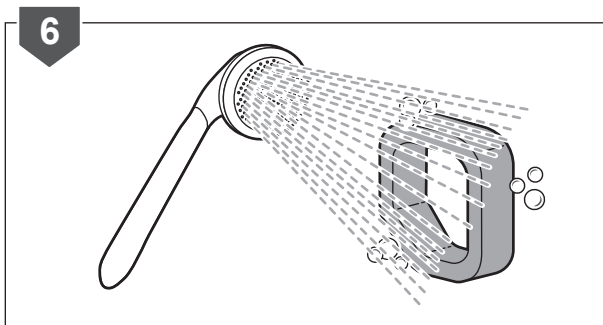
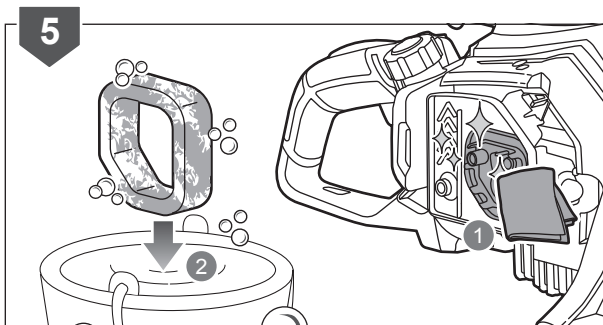
CLEANING THE AIR FILTER

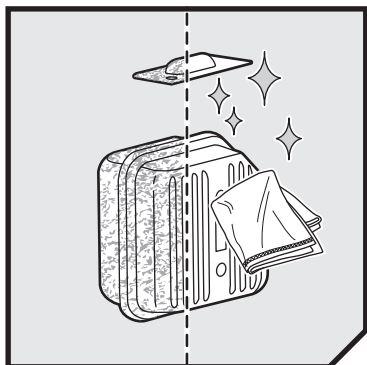
1. Press the switch to the STOP position to stop the engine.
2. Remove the spark plug boot.
3. Loosen and remove the air box knob.
4. Remove the cover and the air filter.



MAINTENANCE

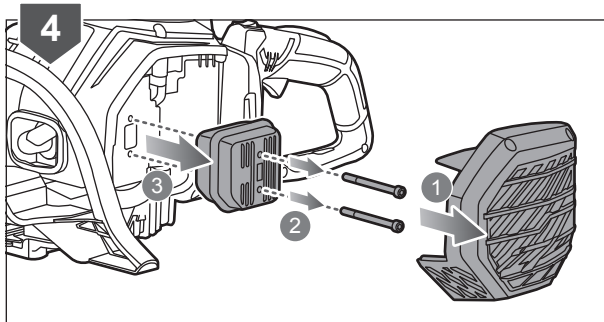
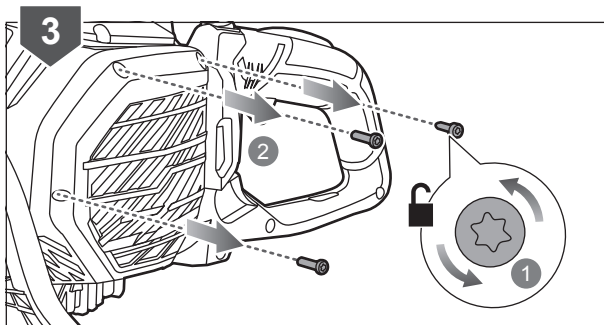
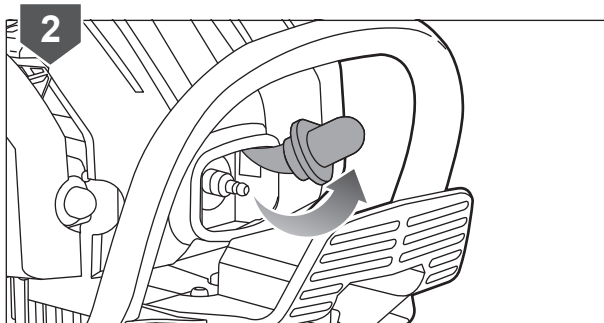
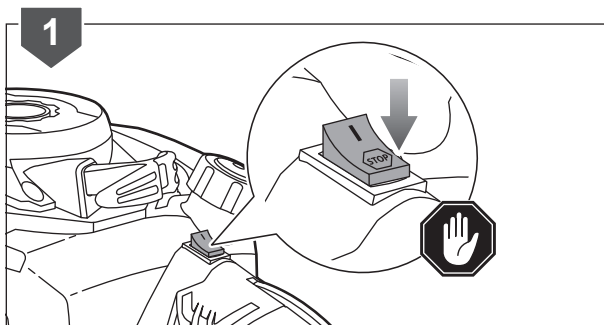
5. Clean the foam filter with a soft, dry cloth.
Clean the air filter with soap and water.
6. Wash off the soap residue with water.
7. Reinstall the air filter and cover.
8. Tighten the air box knob.





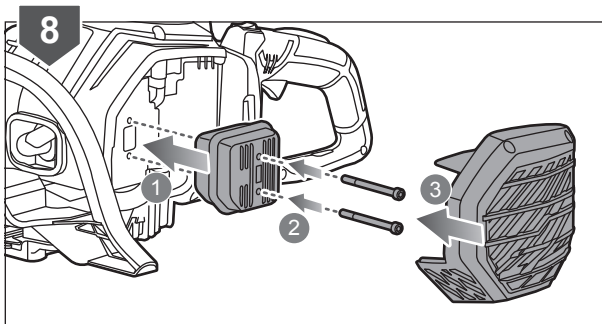
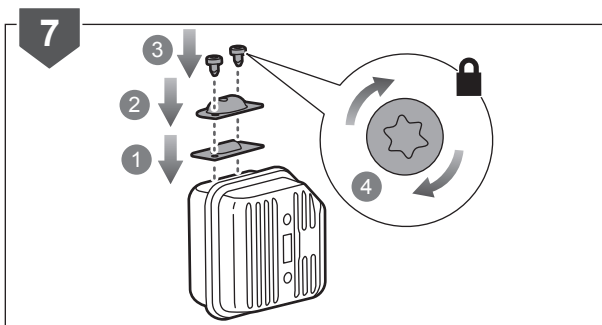
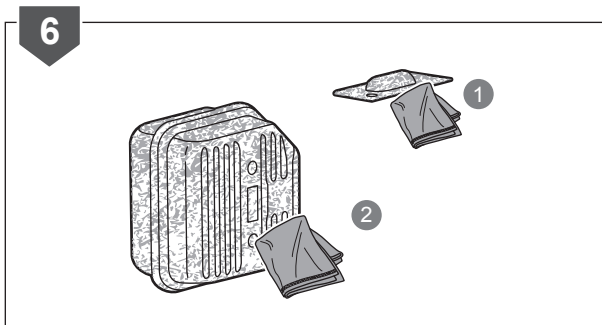
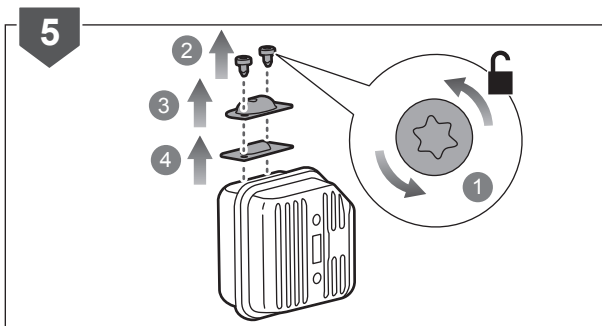
CLEANING THE MUFFLER AND SPARK ARRESTOR

1. Press the switch to the STOP position to stop the engine.
2. Remove the spark plug boot.
3. Untighten and remove the screws.
4. Remove the muffler cover. Untighten and remove the screws, and then remove the muffler.



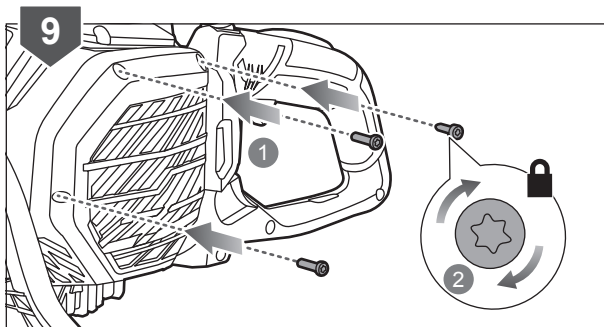
MAINTENANCE

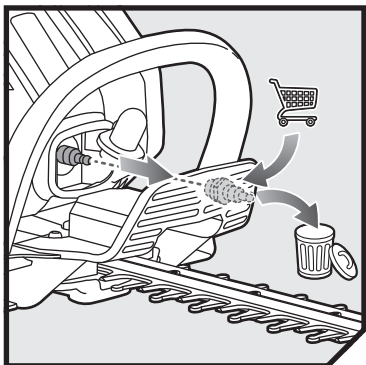
5. Untighten the screws.
Remove the cover and the spark arrestor.
6. Clean the spark arrestor and the muffler with a soft, dry cloth.
7. Reinstall the spark arrestor back to the muffler.
Reinstall the spark arrestor cover.
Reinstall and tighten the screws.
8. Reinstall the muffler and tighten the screws.
Reinstall the muffler cover.



MAINTENANCE

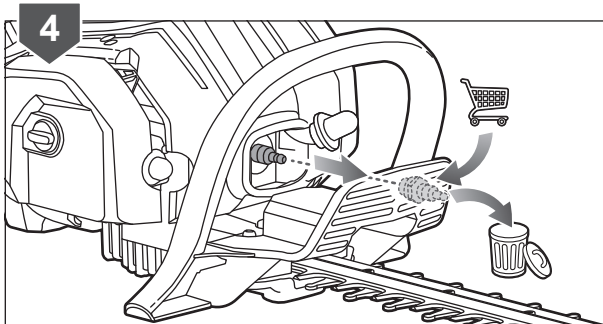
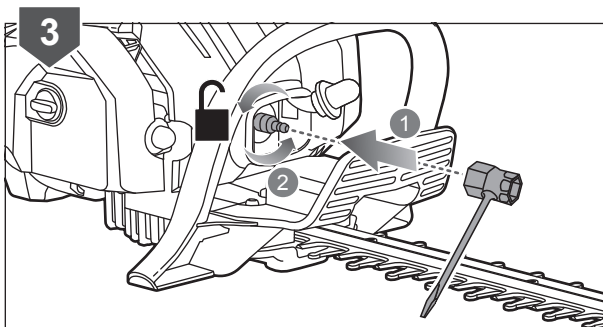
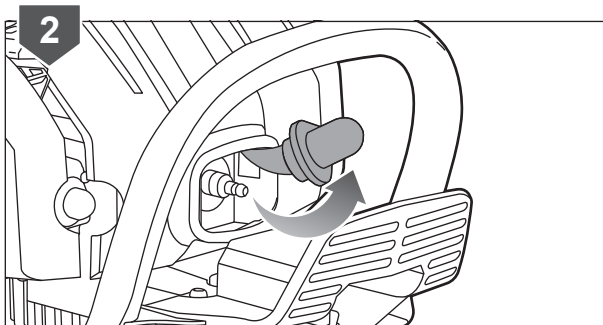
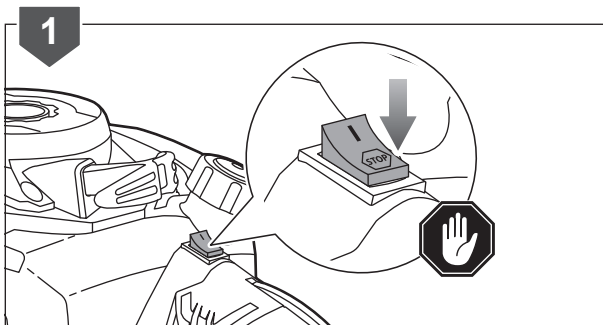
9. Reinstall and tighten the screws.





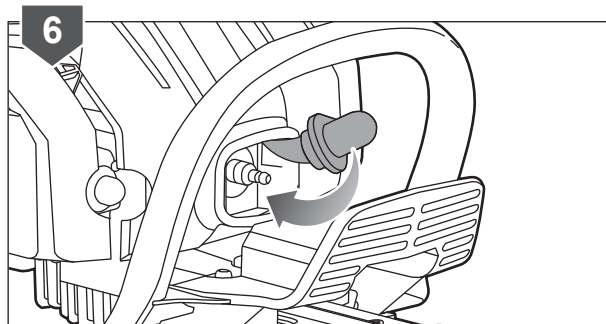
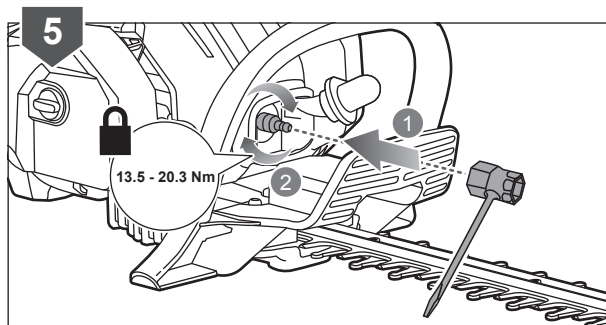
REPLACING THE SPARK PLUG

1. Press the switch to the STOP position to stop the engine.
2. Remove the spark plug boot.
3. Use a combination wrench to undo the spark plug.
4. Remove the spark plug and discard.

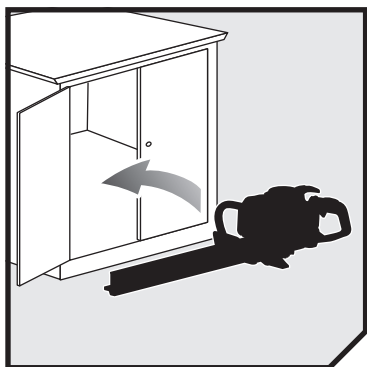


MAINTENANCE

5. Replace the spark plug with a new one. Tighten by turning it in a clockwise direction or 5 turns from finger tight using a combination wrench.
6. Reinstall the spark plug boot.



STORAGE



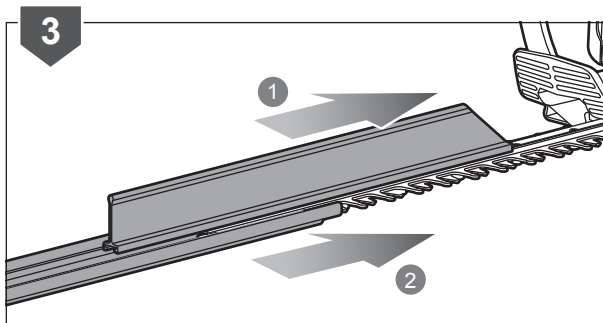
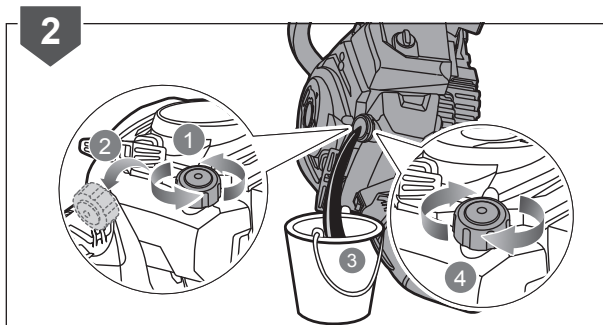
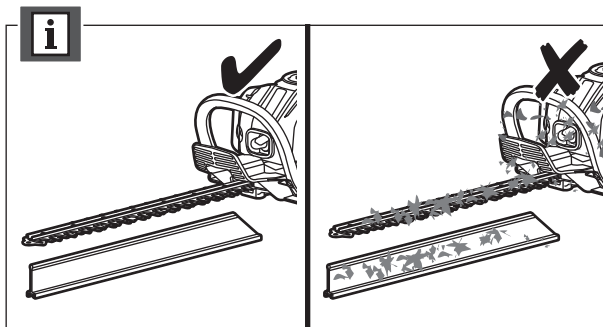
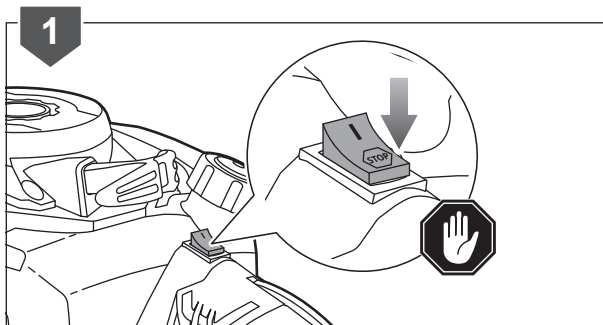
STORING THE HEDGE TRIMMER

1. Press the switch to the STOP position to stop the engine.

NOTE: Clean all foreign materials from the product.

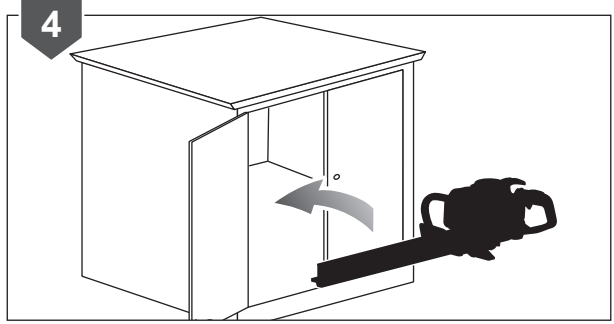
2. Loosen and remove the fuel cap.
Drain all the fuel from the tank into a container approved for petrol. Run the engine to remove all fuel.
Place and tighten the fuel cap.

3. Slide the HEDGESWEEP™ over the blade.
Cover the blade with the scabbard.



STORAGE

4. Store the product in a cool, dry, and well-ventilated place that is inaccessible to children and well away from sources of ignition.



PRODUCT SPECIFICATIONS

Petrol hedge trimmer	
Model	RHT25460RO
Engine displacement	25.4 cc
Maximum engine performance (in accordance with ISO 8893)	0.8 HP (0.6 kW)
Fuel consumption (in accordance with ISO 8893) at maximum engine performance	0.45 L/h
Specific fuel consumption (in accordance with ISO 8893) at maximum engine performance	0.68 L/kW.h
Fuel tank capacity	0.28 L
Blade type	Dual-reciprocating
Cutting length	600 mm
Maximum cutting capacity	32 mm
Weight (without fuel)	5.3 kg
Engine speed (rotational frequency at idle)	2800 - 3650 min ⁻¹
Cut stroke per minute	3700 - 4500
Vibration level (in accordance with Annex C of EN ISO 10517:2009+A1:2013)	
Front handle	
Idling	1.9 m/s ²
Racing	13.2 m/s ²
Equivalent	11.8 m/s ²
Rear handle	
Idling	7.8 m/s ²
Racing	16.1 m/s ²
Equivalent	14.8 m/s ²
Uncertainty of vibration measurement	1.5 m/s ²
Sound pressure level at operator position (LpA) (in accordance with Annex D of EN ISO 10517:2009+A1:2013)	
Idling	74.2 dB(A)
Racing	94.8 dB(A)
Equivalent	93.8 dB(A)
Uncertainty	2.5 dB
Declared value	97 dB(A)
Sound power level (in accordance with Annex D of EN ISO 10517:2009)	
Idling	82.2 dB(A)
Racing	104.6 dB(A)
Equivalent	103.6 dB(A)
Uncertainty	2.5 dB
Declared value	108 dB(A)

REPLACEMENT PART

Spark plug	RCJ6Y (Champion)
Spark plug electrode gap	0.56 - 0.71 mm









Imported by:

Techtronic Industries Australia Pty Ltd
31 Gilby Road, Mount Waverley, VIC 3149
Melbourne, Australia

Techtronic Industries N.Z. Limited
2 Landing Drive, Mangere
Auckland, 2022, New Zealand

960639040-02